



Dok-3 Polyclonal Antibody

Catalog No	BYab-03822
Isotype	IgG
Reactivity	Human;Mouse
Applications	WB;IHC;IF;ELISA
Gene Name	DOK3
Protein Name	Docking protein 3
Immunogen	The antiserum was produced against synthesized peptide derived from human DOK3. AA range:101-150
Specificity	Dok-3 Polyclonal Antibody detects endogenous levels of Dok-3 protein.
Formulation	Liquid in PBS containing 50% glycerol, 0.5% BSA and 0.02% sodium azide.
Source	Polyclonal, Rabbit,IgG
Purification	The antibody was affinity-purified from rabbit antiserum by affinity-chromatography using epitope-specific immunogen.
Dilution	Western Blot: 1/500 - 1/2000. Immunohistochemistry: 1/100 - 1/300. Immunofluorescence: 1/200 - 1/1000. ELISA: 1/20000. Not yet tested in other applications.
Concentration	1 mg/ml
Purity	≥90%
Storage Stability	-20°C/1 year
Synonyms	DOK3; Docking protein 3; Downstream of tyrosine kinase 3
Observed Band	58kD
Cell Pathway	Cytoplasm . Cell membrane ; Peripheral membrane protein ; Cytoplasmic side .
Tissue Specificity	Expressed in spleen.
Function	domain:PTB domain mediates receptor interaction.,function:DOK proteins are enzymatically inert adaptor or scaffolding proteins. They provide a docking platform for the assembly of multimolecular signaling complexes. DOK3 is a negative regulator of JNK signaling in B-cells through interaction with INPP5D/SHIP1. May modulate ABL function.,PTM:Constitutively tyrosine-phosphorylated.,PTM:On IL2 stimulation, phosphorylated on C-terminal tyrosine residues possibly by Src kinases. Can also be phosphorylated by ABL kinase.,similarity:Belongs to the DOK family. Type A subfamily.,similarity:Contains 1 IRS-type PTB domain.,similarity:Contains 1 PH domain.,subunit:On tyrosine phosphorylation, interacts with CSK and

Nanjing BYabscience technology Co.,Ltd



INPP5D/SHIP1 via their SH2 domains. Both Tyr-381 and Tyr-398 are required for interaction with INPP5D. Only Tyr-381 is required for interaction with CSK. Binds ABL through the PTB domain

Background

domain:PTB domain mediates receptor interaction.,function:DOK proteins are enzymatically inert adaptor or scaffolding proteins. They provide a docking platform for the assembly of multimolecular signaling complexes. DOK3 is a negative regulator of JNK signaling in B-cells through interaction with INPP5D/SHIP1. May modulate ABL function.,PTM:Constitutively tyrosine-phosphorylated.,PTM:On IL2 stimulation, phosphorylated on C-terminal tyrosine residues possibly by Src kinases. Can also be phosphorylated by ABL kinase.,similarity:Belongs to the DOK family. Type A subfamily.,similarity:Contains 1 IRS-type PTB domain.,similarity:Contains 1 PH domain.,subunit:On tyrosine phosphorylation, interacts with CSK and INPP5D/SHIP1 via their SH2 domains. Both Tyr-381 and Tyr-398 are required for interaction with INPP5D. Only Tyr-381 is required for interaction with CSK. Binds ABL through the PTB domain and in a kinase-dependent manner. Does not interact with RasGAP.,tissue specificity:Expressed in spleen.,

matters needing attention

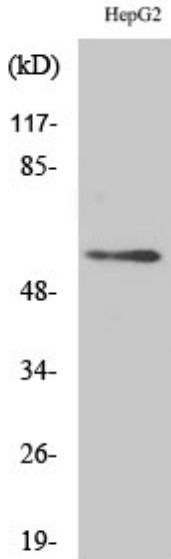
Avoid repeated freezing and thawing!

Usage suggestions

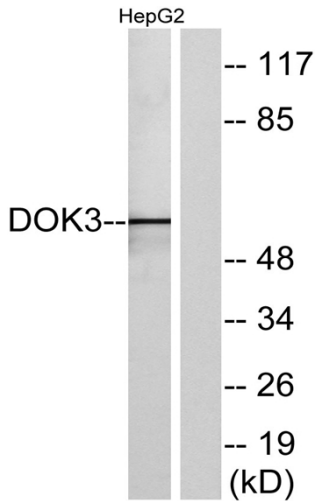
This product can be used in immunological reaction related experiments. For more information, please consult technical personnel.



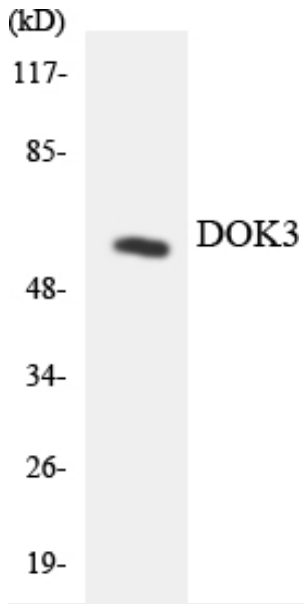
Products Images



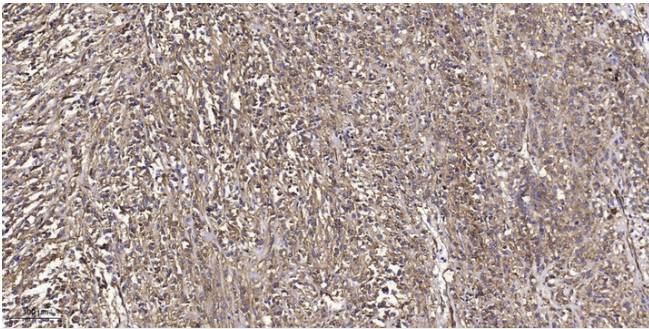
Western Blot analysis of various cells using Dok-3 Polyclonal Antibody



Western blot analysis of lysates from HepG2 cells, using DOK3 Antibody. The lane on the right is blocked with the synthesized peptide.



Western blot analysis of the lysates from K562 cells using DOK3 antibody.



Immunohistochemical analysis of paraffin-embedded human small intestinal carcinoma tissue. 1, primary Antibody was diluted at 1:200(4° overnight). 2, Sodium citrate pH 6.0 was used for antigen retrieval(>98° C,20min). 3, Secondary antibody was diluted at 1:200