



DOCK 2 Polyclonal Antibody

Catalog No	BYab-03819
Isotype	IgG
Reactivity	Human;Mouse;Rat
Applications	IHC;IF;ELISA
Gene Name	DOCK2
Protein Name	Dedicator of cytokinesis protein 2
Immunogen	Synthesized peptide derived from the Internal region of human DOCK 2.
Specificity	DOCK 2 Polyclonal Antibody detects endogenous levels of DOCK 2 protein.
Formulation	Liquid in PBS containing 50% glycerol, 0.5% BSA and 0.02% sodium azide.
Source	Polyclonal, Rabbit,IgG
Purification	The antibody was affinity-purified from rabbit antiserum by affinity-chromatography using epitope-specific immunogen.
Dilution	WB 1:500-2000 ,IHC: 1/100 - 1/300. ELISA: 1/40000.. IF 1:50-200
Concentration	1 mg/ml
Purity	≥90%
Storage Stability	-20°C/1 year
Synonyms	DOCK2; KIAA0209; Dedicator of cytokinesis protein 2
Observed Band	
Cell Pathway	Endomembrane system ; Peripheral membrane protein . Cytoplasm, cytoskeleton . Colocalizes with F-actin.
Tissue Specificity	Specifically expressed in hematopoietic cells. Highly expressed in peripheral blood leukocytes, and expressed at intermediate level in thymus and spleen. Expressed at very low level in the small intestine and colon.
Function	domain:The DHR-2 domain may mediate the GEF activity.,function:Involved in cytoskeletal rearrangements required for lymphocyte migration in response of chemokines. Activates RAC1 and RAC2 small GTPases, probably by functioning as a guanine nucleotide exchange factor (GEF), which exchanges bound GDP for free GTP. May also participate in IL2 transcriptional activation via the activation of RAC2.,similarity:Belongs to the DOCK family.,similarity:Contains 1 DHR-1 (CZH-1) domain.,similarity:Contains 1 DHR-2 (CZH-2) domain.,similarity:Contains 1 SH3 domain.,subcellular location:Colocalizes with F-actin.,subunit:Interacts with RAC1 and RAC2. Interacts with CRKL and VAV. Interacts with CD3Z.,tissue specificity:Specifically expressed in hematopoietic cells. Highly expressed in

Nanjing BYabscience technology Co.,Ltd



peripheral blood leukocytes, and expressed at intermediate level in thymus and spleen. Expressed at very low level in the

Background

The protein encoded by this gene belongs to the CDM protein family. It is specifically expressed in hematopoietic cells and is predominantly expressed in peripheral blood leukocytes. The protein is involved in remodeling of the actin cytoskeleton required for lymphocyte migration in response to chemokine signaling. It activates members of the Rho family of GTPases, for example RAC1 and RAC2, by acting as a guanine nucleotide exchange factor (GEF) to exchange bound GDP for free GTP. [provided by RefSeq, Oct 2016],

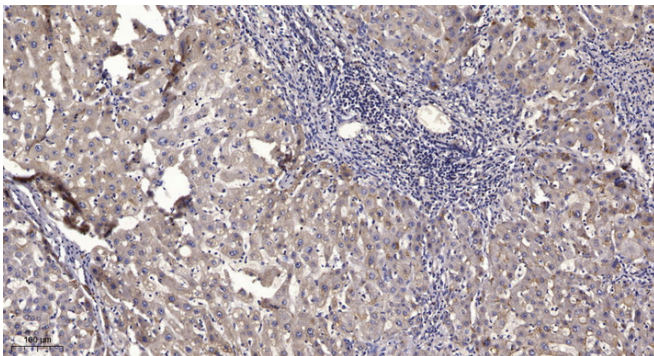
matters needing attention

Avoid repeated freezing and thawing!

Usage suggestions

This product can be used in immunological reaction related experiments. For more information, please consult technical personnel.

Products Images



Immunohistochemical analysis of paraffin-embedded human liver cancer. 1, Antibody was diluted at 1:200(4° overnight). 2, Tris-EDTA,pH9.0 was used for antigen retrieval. 3,Secondary antibody was diluted at 1:200(room temperature, 45min).