



# DOCK 180 Polyclonal Antibody

<b>Catalog No</b>	BYab-03818
<b>Isotype</b>	IgG
<b>Reactivity</b>	Human;Mouse
<b>Applications</b>	WB;ELISA
<b>Gene Name</b>	DOCK1
<b>Protein Name</b>	Dedicator of cytokinesis protein 1
<b>Immunogen</b>	The antiserum was produced against synthesized peptide derived from human DOCK1. AA range:1661-1710
<b>Specificity</b>	DOCK 180 Polyclonal Antibody detects endogenous levels of DOCK 180 protein.
<b>Formulation</b>	Liquid in PBS containing 50% glycerol, 0.5% BSA and 0.02% sodium azide.
<b>Source</b>	Polyclonal, Rabbit,IgG
<b>Purification</b>	The antibody was affinity-purified from rabbit antiserum by affinity-chromatography using epitope-specific immunogen.
<b>Dilution</b>	Western Blot: 1/500 - 1/2000. ELISA: 1/40000. Not yet tested in other applications.
<b>Concentration</b>	1 mg/ml
<b>Purity</b>	≥90%
<b>Storage Stability</b>	-20°C/1 year
<b>Synonyms</b>	DOCK1; Dedicator of cytokinesis protein 1; 180 kDa protein downstream of CRK; DOCK180
<b>Observed Band</b>	215kD
<b>Cell Pathway</b>	Cytoplasm . Membrane . Recruited to membranes via its interaction with phosphatidylinositol 3,4,5-trisphosphate. .
<b>Tissue Specificity</b>	Highly expressed in placenta, lung, kidney, pancreas and ovary. Expressed at intermediate level in thymus, testes and colon.
<b>Function</b>	domain:The DHR-2 domain is necessary and sufficient for the GEF activity.,function:Involved in cytoskeletal rearrangements required for phagocytosis of apoptotic cells and cell motility. Functions as a guanine nucleotide exchange factor (GEF), which activates Rac Rho small GTPases by exchanging bound GDP for free GTP. Its GEF activity may be enhanced by ELMO1.,similarity:Belongs to the DOCK family.,similarity:Contains 1 DHR-1 (CZH-1) domain.,similarity:Contains 1 DHR-2 (CZH-2) domain.,similarity:Contains 1 SH3 domain.,subcellular location:Recruited to membranes via its interaction with phosphatidylinositol 3,4,5-triphosphate.,subunit:Interacts with the SH3 domains of CRK and NCK2 via multiple sites. Interacts with nucleotide-free RAC1

**Nanjing BYabscience technology Co.,Ltd**



via its DHR-2 domain. Interacts with ELMO1, ELMO2 and probably ELMO3 via its SH3 domain. Interacts with RAC1 and BAI1.,tissue specificity:Highly expressed

**Background**

This gene encodes a member of the dedicator of cytokinesis protein family. Dedicator of cytokinesis proteins act as guanine nucleotide exchange factors for small Rho family G proteins. The encoded protein regulates the small GTPase Rac, thereby influencing several biological processes, including phagocytosis and cell migration. Overexpression of this gene has also been associated with certain cancers. Alternative splicing results in multiple transcript variants. [provided by RefSeq, Mar 2014],

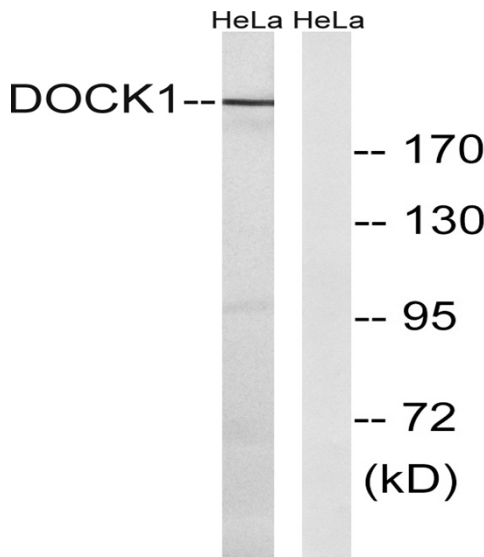
**matters needing attention**

Avoid repeated freezing and thawing!

**Usage suggestions**

This product can be used in immunological reaction related experiments. For more information, please consult technical personnel.

**Products Images**



Western blot analysis of lysates from HeLa cells, using DOCK1 Antibody. The lane on the right is blocked with the synthesized peptide.