



DACA-1 Polyclonal Antibody

Catalog No	BYab-03811
Isotype	IgG
Reactivity	Human;Mouse;Rat
Applications	WB;IHC;IF;ELISA
Gene Name	YTHDF1
Protein Name	YTH domain family protein 1
Immunogen	The antiserum was produced against synthesized peptide derived from human YTHDF1. AA range:1-50
Specificity	DACA-1 Polyclonal Antibody detects endogenous levels of DACA-1 protein.
Formulation	Liquid in PBS containing 50% glycerol, 0.5% BSA and 0.02% sodium azide.
Source	Polyclonal, Rabbit,IgG
Purification	The antibody was affinity-purified from rabbit antiserum by affinity-chromatography using epitope-specific immunogen.
Dilution	WB: 1/500 - 1/2000. IHC: 1/100 - 1/300. ELISA: 1/5000.. IF 1:50-200
Concentration	1 mg/ml
Purity	≥90%
Storage Stability	-20°C/1 year
Synonyms	YTHDF1; C20orf21; YTH domain family protein 1; Dermatomyositis associated with cancer putative autoantigen 1; DACA-1
Observed Band	61kD
Cell Pathway	Cytoplasm . Cytoplasm, P-body . Cytoplasm, Stress granule .
Tissue Specificity	Cervix carcinoma,Colon,Ileal mucosa,Lymph,Melanoma,Placenta
Function	similarity:Contains 1 YTH domain.,
Background	similarity:Contains 1 YTH domain.,
matters needing attention	Avoid repeated freezing and thawing!

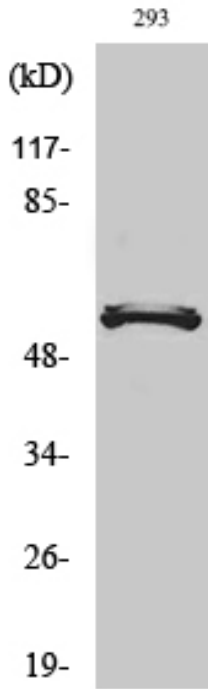
Nanjing BYabscience technology Co.,Ltd



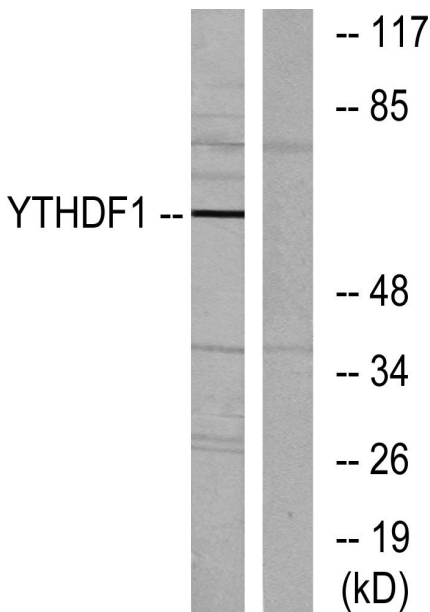
Usage suggestions

This product can be used in immunological reaction related experiments. For more information, please consult technical personnel.

Products Images

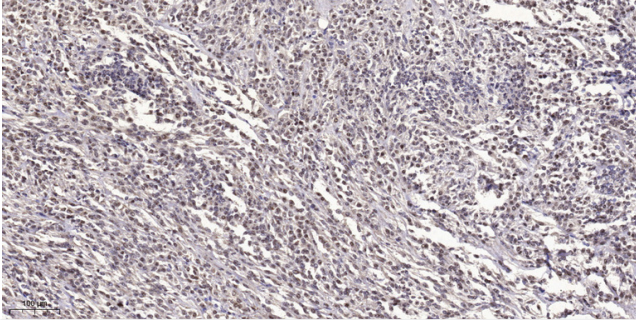


Western Blot analysis of various cells using DACA-1 Polyclonal Antibody



Western blot analysis of lysates from 293 cells, using YTHDF1 Antibody. The lane on the right is blocked with the synthesized peptide.

Nanjing BYabscience technology Co.,Ltd



Immunohistochemical analysis of paraffin-embedded human small intestinal carcinoma tissue. 1,primary Antibody was diluted at 1:200(4° overnight). 2, Sodium citrate pH 6.0 was used for antigen retrieval(>98° C,20min). 3,Secondary antibody was diluted at 1:200