



Cystatin SA Polyclonal Antibody

Catalog No	BYab-03808
Isotype	IgG
Reactivity	Human;Rat;Mouse;
Applications	IHC;IF;ELISA
Gene Name	CST2
Protein Name	Cystatin-SA
Immunogen	The antiserum was produced against synthesized peptide derived from human CST2. AA range:11-60
Specificity	Cystatin SA Polyclonal Antibody detects endogenous levels of Cystatin SA protein.
Formulation	Liquid in PBS containing 50% glycerol, 0.5% BSA and 0.02% sodium azide.
Source	Polyclonal, Rabbit,IgG
Purification	The antibody was affinity-purified from rabbit antiserum by affinity-chromatography using epitope-specific immunogen.
Dilution	IHC: 1/100 - 1/300. ELISA: 1/40000.. IF 1:50-200
Concentration	1 mg/ml
Purity	≥90%
Storage Stability	-20°C/1 year
Synonyms	CST2; Cystatin-SA; Cystatin-2; Cystatin-S5
Observed Band	
Cell Pathway	Secreted .
Tissue Specificity	Expressed in submandibular and sublingual saliva but not in parotid saliva (at protein level). Expressed in submandibular gland and parotid gland.
Function	function:Thiol protease inhibitor.,similarity:Belongs to the cystatin family.,tissue specificity:Only expressed in submandibular gland and parotid gland.,
Background	The cystatin superfamily encompasses proteins that contain multiple cystatin-like sequences. Some of the members are active cysteine protease inhibitors, while others have lost or perhaps never acquired this inhibitory activity. There are three inhibitory families in the superfamily, including the type 1 cystatins (stefins), type 2 cystatins and the kininogens. The type 2 cystatin proteins are a class of cysteine proteinase inhibitors found in a variety of human fluids and secretions, where they appear to provide protective functions. The cystatin locus on chromosome 20 contains the majority of the type 2 cystatin genes and pseudogenes. This gene is

Nanjing BYabscience technology Co.,Ltd



located in the cystatin locus and encodes a secreted thiol protease inhibitor found at high levels in saliva, tears and seminal plasma. [provided by RefSeq, Jul 2008],

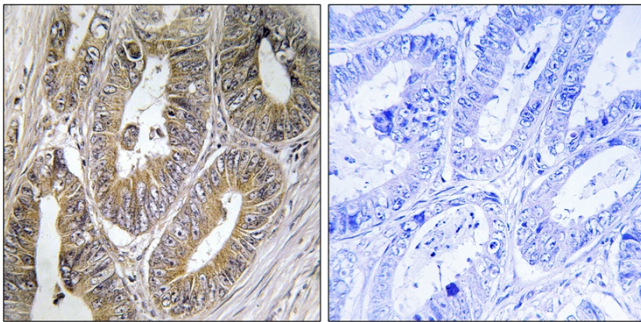
matters needing attention

Avoid repeated freezing and thawing!

Usage suggestions

This product can be used in immunological reaction related experiments. For more information, please consult technical personnel.

Products Images



Immunohistochemistry analysis of paraffin-embedded human colon carcinoma, using CST2 Antibody. The picture on the right is blocked with the synthesized peptide.