



Cystatin 8 Polyclonal Antibody

Catalog No	BYab-03802
Isotype	IgG
Reactivity	Human;Mouse
Applications	IHC;IF;ELISA
Gene Name	CST8
Protein Name	Cystatin-8
Immunogen	The antiserum was produced against synthesized peptide derived from human CST8. AA range:31-80
Specificity	Cystatin 8 Polyclonal Antibody detects endogenous levels of Cystatin 8 protein.
Formulation	Liquid in PBS containing 50% glycerol, 0.5% BSA and 0.02% sodium azide.
Source	Polyclonal, Rabbit,IgG
Purification	The antibody was affinity-purified from rabbit antiserum by affinity-chromatography using epitope-specific immunogen.
Dilution	IHC: 1/100 - 1/300. ELISA: 1/40000.. IF 1:50-200
Concentration	1 mg/ml
Purity	≥90%
Storage Stability	-20°C/1 year
Synonyms	CST8; CRES; Cystatin-8; Cystatin-related epididymal spermatogenic protein
Observed Band	
Cell Pathway	Secreted.
Tissue Specificity	Proximal caput region of the epididymis. Lower expression in the testis. Within the testis it is localized to the elongating spermatids, whereas within the epididymis it is exclusively synthesized by the proximal caput epithelium.
Function	function:Performs a specialized role during sperm development and maturation.,similarity:Belongs to the cystatin family.,tissue specificity:Proximal caput region of the epididymis. Lower expression in the testis. Within the testis it is localized to the elongating spermatids, whereas within the epididymis it is exclusively synthesized by the proximal caput epithelium.,
Background	The cystatin superfamily encompasses proteins that contain multiple cystatin-like sequences. Some of the members are active cysteine protease inhibitors, while others have lost or perhaps never acquired this inhibitory activity. There are three inhibitory families in the superfamily, including the type 1 cystatins (stefins), type 2

Nanjing BYabscience technology Co.,Ltd



cystatins and the kininogens. The type 2 cystatin proteins are a class of cysteine proteinase inhibitors found in a variety of human fluids and secretions. The cystatin locus on chromosome 20 contains the majority of the type 2 cystatin genes and pseudogenes. This gene is located in the cystatin locus and encodes a protein similar to type 2 cystatins. The encoded protein exhibits highly tissue-specific expression in the reproductive tract, suggesting implicit roles in reproduction. Alternative splicing results in multiple transcript variants. [provided by RefSeq, Aug 2013],

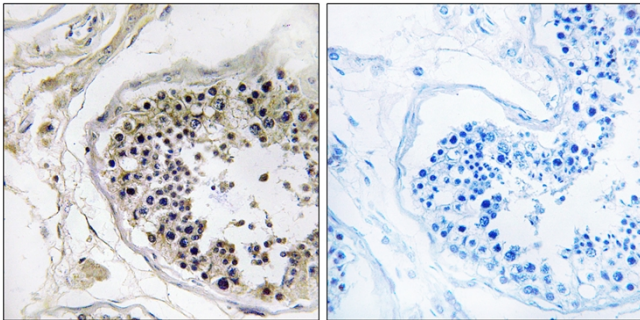
matters needing attention

Avoid repeated freezing and thawing!

Usage suggestions

This product can be used in immunological reaction related experiments. For more information, please consult technical personnel.

Products Images



Immunohistochemistry analysis of paraffin-embedded human testis tissue, using CST8 Antibody. The picture on the right is blocked with the synthesized peptide.