



Cystatin 11 Polyclonal Antibody

| | |
|---------------------------|---|
| Catalog No | BYab-03801 |
| Isotype | IgG |
| Reactivity | Human;Rat;Mouse; |
| Applications | WB;ELISA |
| Gene Name | CST11 |
| Protein Name | Cystatin-11 |
| Immunogen | The antiserum was produced against synthesized peptide derived from human CST11. AA range:81-130 |
| Specificity | Cystatin 11 Polyclonal Antibody detects endogenous levels of Cystatin 11 protein. |
| Formulation | Liquid in PBS containing 50% glycerol, 0.5% BSA and 0.02% sodium azide. |
| Source | Polyclonal, Rabbit,IgG |
| Purification | The antibody was affinity-purified from rabbit antiserum by affinity-chromatography using epitope-specific immunogen. |
| Dilution | Western Blot: 1/500 - 1/2000. ELISA: 1/40000. Not yet tested in other applications. |
| Concentration | 1 mg/ml |
| Purity | ≥90% |
| Storage Stability | -20°C/1 year |
| Synonyms | CST11; CST8L; Cystatin-11 |
| Observed Band | 17kD |
| Cell Pathway | Secreted . Probably secreted into the epididymis lumen, where it localizes to the outer surface of sperm. Specifically localizes to the postacrosomal and tail regions of sperm. . |
| Tissue Specificity | Detected in the epithelium and lumen of the epididymis, and in sperm (at protein level). |
| Function | function:Has antibacterial activity against the Gram-negative bacteria E.coli. May play a role in sperm maturation and fertilization.,similarity:Belongs to the cystatin family.,subcellular location:Nuclear and cytoplasmic in the epididymis. Localized to the postacrosomal and tail regions of sperm. Probably localized to the outer surface of sperm.,tissue specificity:Detected in the epithelium and lumen of the epididymis, and in sperm (at protein level),. |
| Background | The cystatin superfamily encompasses proteins that contain multiple cystatin-like sequences. Some of the members are active cysteine protease inhibitors, while others have lost or perhaps never acquired this inhibitory activity. There are three |

Nanjing BYabscience technology Co.,Ltd



inhibitory families in the superfamily, including the type 1 cystatins (stefins), type 2 cystatins and the kininogens. The type 2 cystatin proteins are a class of cysteine proteinase inhibitors found in a variety of human fluids and secretions. The cystatin locus on chromosome 20 contains the majority of the type 2 cystatin genes and pseudogenes. This gene is located in the cystatin locus and encodes an epididymal-specific protein shown to have antimicrobial activity against *E. coli*. Alternative splicing yields two variants encoding distinct isoforms. [provided by RefSeq, Sep 2014],

matters needing attention

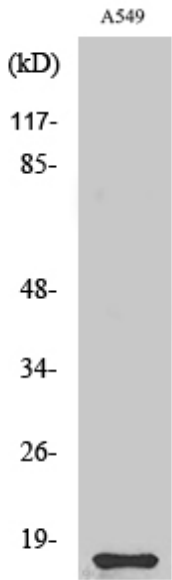
Avoid repeated freezing and thawing!

Usage suggestions

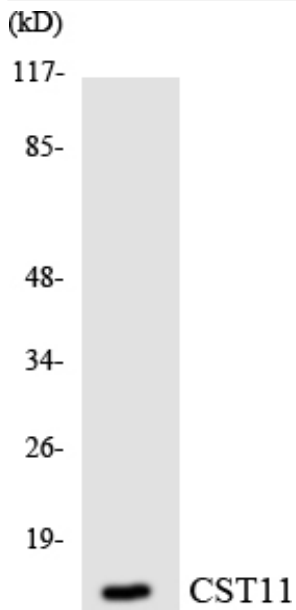
This product can be used in immunological reaction related experiments. For more information, please consult technical personnel.



Products Images



Western Blot analysis of various cells using Cystatin 11 Polyclonal Antibody



Western blot analysis of the lysates from Jurkat cells using CST11 antibody.