



CST9L Polyclonal Antibody

Catalog No	BYab-03799
Isotype	IgG
Reactivity	Human;Rat;Mouse;
Applications	IHC;IF;ELISA
Gene Name	CST9L
Protein Name	Cystatin-9-like
Immunogen	The antiserum was produced against synthesized peptide derived from human CST9L. AA range:81-130
Specificity	CST9L Polyclonal Antibody detects endogenous levels of CST9L protein.
Formulation	Liquid in PBS containing 50% glycerol, 0.5% BSA and 0.02% sodium azide.
Source	Polyclonal, Rabbit,IgG
Purification	The antibody was affinity-purified from rabbit antiserum by affinity-chromatography using epitope-specific immunogen.
Dilution	IHC: 1/100 - 1/300. ELISA: 1/10000.. IF 1:50-200
Concentration	1 mg/ml
Purity	≥90%
Storage Stability	-20°C/1 year
Synonyms	CST9L; Cystatin-9-like
Observed Band	
Cell Pathway	Secreted .
Tissue Specificity	Specifically expressed in testis.
Function	similarity:Belongs to the cystatin family.,
Background	The cystatin superfamily encompasses proteins that contain multiple cystatin-like sequences. Some of the members are active cysteine protease inhibitors, while others have lost or perhaps never acquired this inhibitory activity. There are three inhibitory families in the superfamily, including the type 1 cystatins (stefins), type 2 cystatins and the kininogens. The type 2 cystatin proteins are a class of cysteine proteinase inhibitors found in a variety of human fluids and secretions. The cystatin locus on chromosome 20 contains the majority of the type 2 cystatin genes and pseudogenes. This gene is located in the cystatin locus and encodes a protein similar to mouse cystatin 9. Based on its testis-specific expression, it is

Nanjing BYabscience technology Co.,Ltd



likely to have a role in tissue reorganization during early testis development. [provided by RefSeq, Jul 2008],

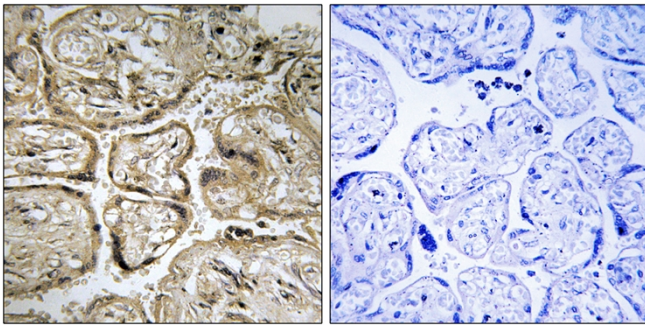
matters needing attention

Avoid repeated freezing and thawing!

Usage suggestions

This product can be used in immunological reaction related experiments. For more information, please consult technical personnel.

Products Images



Immunohistochemistry analysis of paraffin-embedded human placenta, using CST9L Antibody. The picture on the right is blocked with the synthesized peptide.