



CPXM2 Polyclonal Antibody

Catalog No	BYab-03791
Isotype	IgG
Reactivity	Human;Rat;Mouse;
Applications	IHC;IF;ELISA
Gene Name	CPXM2
Protein Name	Inactive carboxypeptidase-like protein X2
Immunogen	The antiserum was produced against synthesized peptide derived from human CPXM2. AA range:450-500
Specificity	CPXM2 Polyclonal Antibody detects endogenous levels of CPXM2 protein.
Formulation	Liquid in PBS containing 50% glycerol, 0.5% BSA and 0.02% sodium azide.
Source	Polyclonal, Rabbit,IgG
Purification	The antibody was affinity-purified from rabbit antiserum by affinity-chromatography using epitope-specific immunogen.
Dilution	IHC: 1/100 - 1/300. ELISA: 1/20000.. IF 1:50-200
Concentration	1 mg/ml
Purity	≥90%
Storage Stability	-20°C/1 year
Synonyms	CPXM2; Inactive carboxypeptidase-like protein X2
Observed Band	
Cell Pathway	Secreted .
Tissue Specificity	Brain,Lung,Stomach,Testis,
Function	caution:As it has lost active sites residues and zinc-binding sites it is unlikely to be catalytically active.,function:May be involved in cell-cell interactions.,similarity:Belongs to the peptidase M14 family.,similarity:Contains 1 F5/8 type C domain.,
Background	caution:As it has lost active sites residues and zinc-binding sites it is unlikely to be catalytically active.,function:May be involved in cell-cell interactions.,similarity:Belongs to the peptidase M14 family.,similarity:Contains 1 F5/8 type C domain.,

Nanjing BYabscience technology Co.,Ltd



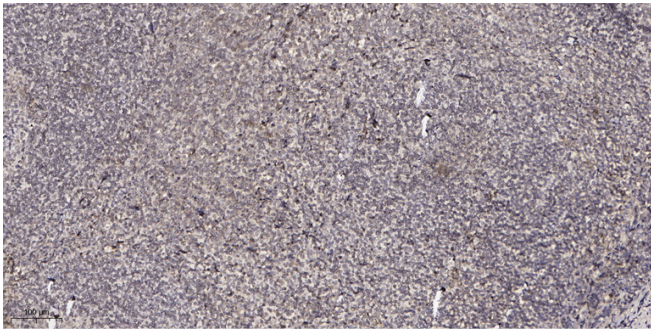
matters needing attention

Avoid repeated freezing and thawing!

Usage suggestions

This product can be used in immunological reaction related experiments. For more information, please consult technical personnel.

Products Images



Immunohistochemical analysis of paraffin-embedded human tonsil. 1, Antibody was diluted at 1:200(4° overnight). 2, Tris-EDTA,pH9.0 was used for antigen retrieval. 3,Secondary antibody was diluted at 1:200(room temperature, 30min).