



CPA1 Polyclonal Antibody

Catalog No	BYab-03783
Isotype	IgG
Reactivity	Human;Rat;Mouse;
Applications	WB;IHC;IF;ELISA
Gene Name	CPA1
Protein Name	Carboxypeptidase A1
Immunogen	The antiserum was produced against synthesized peptide derived from human Carboxypeptidase A1. AA range:301-350
Specificity	CPA1 Polyclonal Antibody detects endogenous levels of CPA1 protein.
Formulation	Liquid in PBS containing 50% glycerol, 0.5% BSA and 0.02% sodium azide.
Source	Polyclonal, Rabbit,IgG
Purification	The antibody was affinity-purified from rabbit antiserum by affinity-chromatography using epitope-specific immunogen.
Dilution	WB: 1/500 - 1/2000. IHC: 1/100 - 1/300. ELISA: 1/40000.. IF 1:50-200
Concentration	1 mg/ml
Purity	≥90%
Storage Stability	-20°C/1 year
Synonyms	CPA1; CPA; Carboxypeptidase A1
Observed Band	47kD
Cell Pathway	Secreted.
Tissue Specificity	Pancreas,
Function	catalytic activity:Release of a C-terminal amino acid, but little or no action with -Asp, -Glu, -Arg, -Lys or -Pro.,cofactor:Binds 1 zinc ion per subunit.,similarity:Belongs to the peptidase M14 family.,subunit:Monomer. May form a complex with proelastase 2.,
Background	This gene encodes a member of the carboxypeptidase A family of zinc metalloproteases. This enzyme is produced in the pancreas and preferentially cleaves C-terminal branched-chain and aromatic amino acids from dietary proteins. This gene and several family members are present in a gene cluster on chromosome 7. Mutations in this gene may be linked to chronic pancreatitis, while elevated protein levels may be associated with pancreatic cancer. [provided by

Nanjing BYabscience technology Co.,Ltd



RefSeq, Jan 2015],

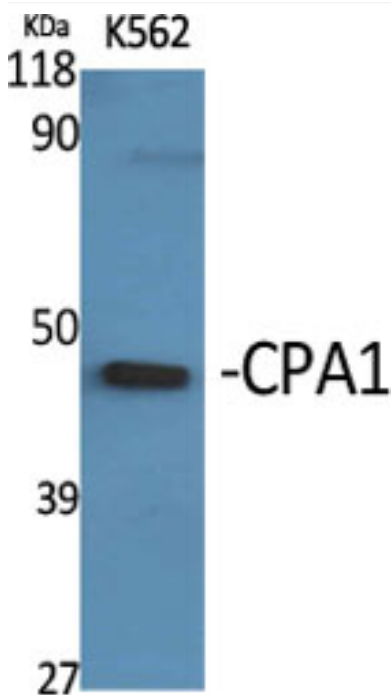
matters needing attention

Avoid repeated freezing and thawing!

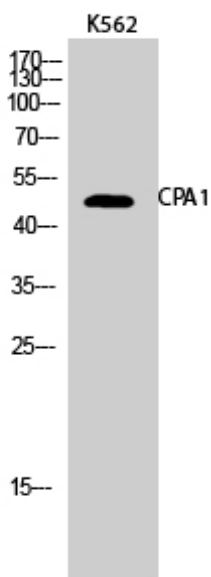
Usage suggestions

This product can be used in immunological reaction related experiments. For more information, please consult technical personnel.

Products Images

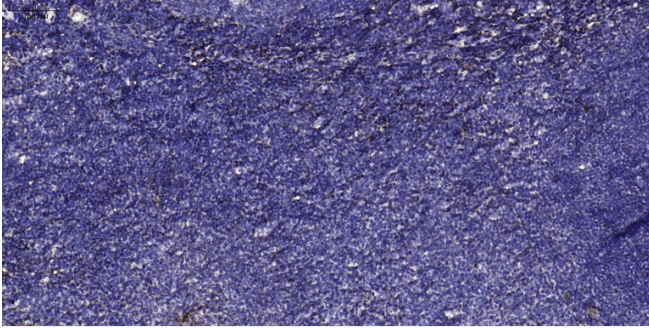


Western Blot analysis of various cells using CPA1 Polyclonal Antibody



Western Blot analysis of K562 cells using CPA1 Polyclonal Antibody

Nanjing BYabscience technology Co.,Ltd



Immunohistochemical analysis of paraffin-embedded human tonsil. 1, Antibody was diluted at 1:200(4° overnight). 2, Tris-EDTA,pH9.0 was used for antigen retrieval. 3,Secondary antibody was diluted at 1:200(room temperature, 30min).