



CNK1 Polyclonal Antibody

Catalog No	BYab-03778
Isotype	IgG
Reactivity	Human;Mouse;Rat
Applications	WB;IHC;IF;ELISA
Gene Name	CNKSR1
Protein Name	Connector enhancer of kinase suppressor of ras 1
Immunogen	The antiserum was produced against synthesized peptide derived from human CNKR1. AA range:491-540
Specificity	CNK1 Polyclonal Antibody detects endogenous levels of CNK1 protein.
Formulation	Liquid in PBS containing 50% glycerol, 0.5% BSA and 0.02% sodium azide.
Source	Polyclonal, Rabbit,IgG
Purification	The antibody was affinity-purified from rabbit antiserum by affinity-chromatography using epitope-specific immunogen.
Dilution	Western Blot: 1/500 - 1/2000. Immunohistochemistry: 1/100 - 1/300. Immunofluorescence: 1/200 - 1/1000. ELISA: 1/10000. Not yet tested in other applications.
Concentration	1 mg/ml
Purity	≥90%
Storage Stability	-20°C/1 year
Synonyms	CNKSR1; CNK1; Connector enhancer of kinase suppressor of ras 1; Connector enhancer of KSR 1; CNK homolog protein 1; CNK1; hCNK1; Connector enhancer of KSR-like
Observed Band	80kD
Cell Pathway	Cytoplasm . Membrane ; Peripheral membrane protein .
Tissue Specificity	Brain,Epithelium,Kidney,Liver,Neuroepithelium,Place
Function	function:May function as an adapter protein or regulator of Ras signaling pathways.,PTM:Phosphorylated on tyrosine.,similarity:Belongs to the CNKSR family.,similarity:Contains 1 CRIC domain.,similarity:Contains 1 PDZ (DHR) domain.,similarity:Contains 1 PH domain.,similarity:Contains 1 SAM (sterile alpha motif) domain.,subunit:Interacts with RHO and RALGDS.,
Background	This gene encodes a protein containing several motifs involved in protein-protein interaction, including PDZ, PH (Pleckstrin homology), and SAM (sterile alpha

Nanjing BYabscience technology Co.,Ltd



motif) domains. The encoded protein acts as a scaffold component for receptor tyrosine kinase signaling and may mediate crosstalk between different signaling pathways. Alternative splicing results in multiple transcript variants. [provided by RefSeq, Jul 2014],

matters needing attention

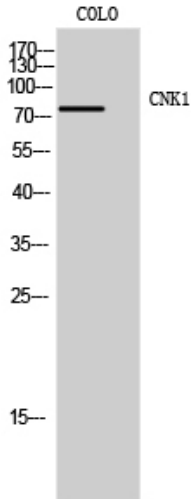
Avoid repeated freezing and thawing!

Usage suggestions

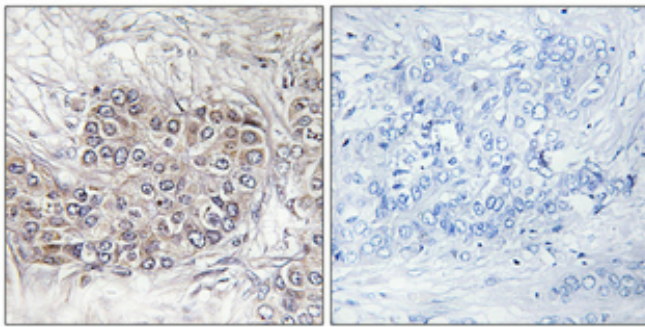
This product can be used in immunological reaction related experiments. For more information, please consult technical personnel.



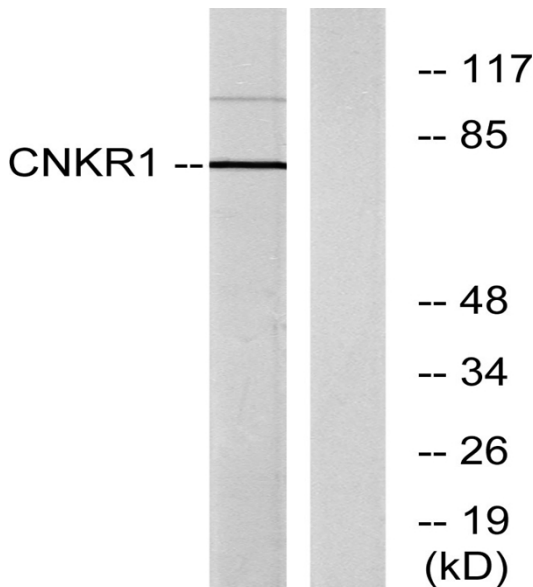
Products Images



Western Blot analysis of COLO cells using CNK1 Polyclonal Antibody

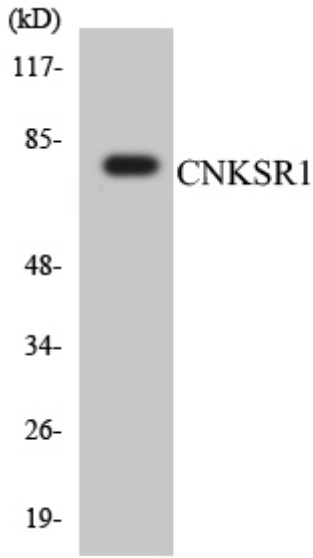


Immunohistochemical analysis of paraffin-embedded Human breast cancer. Antibody was diluted at 1:100(4° overnight). High-pressure and temperature Tris-EDTA,pH8.0 was used for antigen retrieval. Negative contrl (right) obtained from antibody was pre-absorbed by immunogen peptide.



Western blot analysis of lysates from COLO205 cells, using CNKR1 Antibody. The lane on the right is blocked with the synthesized peptide.

Nanjing BYabscience technology Co.,Ltd



Western blot analysis of the lysates from HT-29 cells using CNKSR1 antibody.