



CLN6 Polyclonal Antibody

Catalog No	BYab-03777
Isotype	IgG
Reactivity	Human;Rat;Mouse;
Applications	WB;IHC;IF;ELISA
Gene Name	CLN6
Protein Name	Ceroid-lipofuscinosis neuronal protein 6
Immunogen	The antiserum was produced against synthesized peptide derived from human CLN6. AA range:221-270
Specificity	CLN6 Polyclonal Antibody detects endogenous levels of CLN6 protein.
Formulation	Liquid in PBS containing 50% glycerol, 0.5% BSA and 0.02% sodium azide.
Source	Polyclonal, Rabbit,IgG
Purification	The antibody was affinity-purified from rabbit antiserum by affinity-chromatography using epitope-specific immunogen.
Dilution	WB: 1/500 - 1/2000. IHC: 1/100 - 1/300. ELISA: 1/40000.. IF 1:50-200
Concentration	1 mg/ml
Purity	≥90%
Storage Stability	-20°C/1 year
Synonyms	CLN6; Ceroid-lipofuscinosis neuronal protein 6; Protein CLN6
Observed Band	40kD
Cell Pathway	Endoplasmic reticulum membrane ; Multi-pass membrane protein . Endoplasmic reticulum .
Tissue Specificity	Epithelium,Lung,Urinary bladder,
Function	disease:Defects in CLN6 are the cause of variant late-onset infantile neuronal ceroid lipofuscinosis (vLINCL) [MIM:601780].,online information:Neural Ceroid Lipofuscinoses mutation db,
Background	This gene is one of eight which have been associated with neuronal ceroid lipofuscinoses (NCL). Also referred to as Batten disease, NCL comprises a class of autosomal recessive, neurodegenerative disorders affecting children. The genes responsible likely encode proteins involved in the degradation of post-translationally modified proteins in lysosomes. The primary defect in NCL disorders is thought to be associated with lysosomal storage function. [provided by RefSeq, Oct 2008],

Nanjing BYabscience technology Co.,Ltd



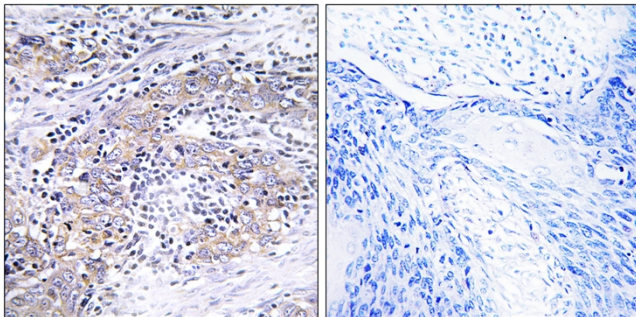
matters needing attention

Avoid repeated freezing and thawing!

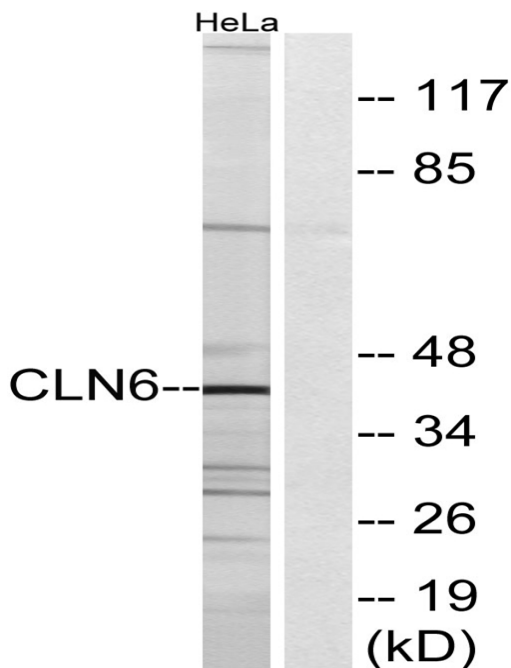
Usage suggestions

This product can be used in immunological reaction related experiments. For more information, please consult technical personnel.

Products Images



Immunohistochemistry analysis of paraffin-embedded human cervix carcinoma tissue, using CLN6 Antibody. The picture on the right is blocked with the synthesized peptide.



Western blot analysis of lysates from HeLa cells, using CLN6 Antibody. The lane on the right is blocked with the synthesized peptide.