



CHST2 Polyclonal Antibody

Catalog No	BYab-03772
Isotype	IgG
Reactivity	Human;Rat;Mouse;
Applications	WB;ELISA
Gene Name	CHST2
Protein Name	Carbohydrate sulfotransferase 2
Immunogen	The antiserum was produced against synthesized peptide derived from human CHST2. AA range:1-50
Specificity	CHST2 Polyclonal Antibody detects endogenous levels of CHST2 protein.
Formulation	Liquid in PBS containing 50% glycerol, 0.5% BSA and 0.02% sodium azide.
Source	Polyclonal, Rabbit,IgG
Purification	The antibody was affinity-purified from rabbit antiserum by affinity-chromatography using epitope-specific immunogen.
Dilution	Western Blot: 1/500 - 1/2000. ELISA: 1/10000. Not yet tested in other applications.
Concentration	1 mg/ml
Purity	≥90%
Storage Stability	-20°C/1 year
Synonyms	CHST2; GN6ST; Carbohydrate sulfotransferase 2; Galactose/N-acetylglucosamine/N-acetylglucosamine 6-O-sulfotransferase 2; GST-2; N-acetylglucosamine 6-O-sulfotransferase 1; GlcNAc6ST-1; Gn6ST-1
Observed Band	58kD
Cell Pathway	Golgi apparatus, trans-Golgi network membrane ; Single-pass type II membrane protein .
Tissue Specificity	Widely expressed. Highly expressed in bone marrow, peripheral blood leukocytes, spleen, brain, spinal cord, ovary and placenta. Expressed by high endothelial cells (HEVs) and leukocytes.
Function	caution:It is uncertain whether Met-1 or Met-48 is the initiator.,function:Catalyzes the transfer of sulfate to position 6 of non-reducing N-acetylglucosamine (GlcNAc) residues within keratan-like structures on N-linked glycans and within mucin-associated glycans that can ultimately serve as L-selectin ligands. L-selectin ligands are present in high endothelial cells (HEVs) and play a central role in lymphocyte homing at sites of inflammation. Participates in biosynthesis of L-selectin ligand sialyl 6-sulfo Lewis X and in lymphocyte homing to Peyer

Nanjing BYabscience technology Co.,Ltd



patches. Has no activity toward O-linked sugars. Its substrate specificity may be influenced by its subcellular location. Sulfates GlcNAc residues at terminal, non-reducing ends of oligosaccharide chains.,induction:Up-regulated upon cytokine activation.,online information:GlycoGene database,similarity:Belongs to the sulfotransferase 1 family.

Background

This locus encodes a sulfotransferase protein. The encoded enzyme catalyzes the sulfation of a nonreducing N-acetylglucosamine residue, and may play a role in biosynthesis of 6-sulfosialyl Lewis X antigen. [provided by RefSeq, Aug 2011],

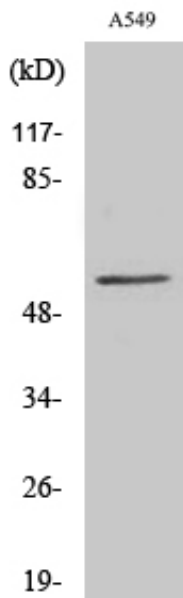
matters needing attention

Avoid repeated freezing and thawing!

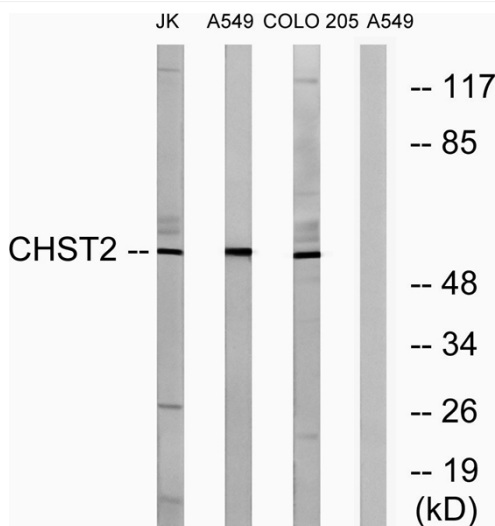
Usage suggestions

This product can be used in immunological reaction related experiments. For more information, please consult technical personnel.

Products Images

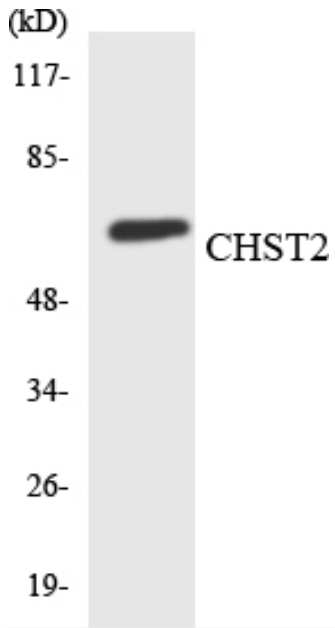


Western Blot analysis of various cells using CHST2 Polyclonal Antibody



Western blot analysis of lysates from A549, COLO, and Jurkat cells, using CHST2 Antibody. The lane on the right is blocked with the synthesized peptide.

Nanjing BYabscience technology Co.,Ltd



Western blot analysis of the lysates from K562 cells using CHST2 antibody.