



# CEP57 Polyclonal Antibody

<b>Catalog No</b>	BYab-03763
<b>Isotype</b>	IgG
<b>Reactivity</b>	Human;Rat;Mouse;
<b>Applications</b>	WB;ELISA
<b>Gene Name</b>	CEP57
<b>Protein Name</b>	Centrosomal protein of 57 kDa
<b>Immunogen</b>	The antiserum was produced against synthesized peptide derived from human CEP57. AA range:241-290
<b>Specificity</b>	CEP57 Polyclonal Antibody detects endogenous levels of CEP57 protein.
<b>Formulation</b>	Liquid in PBS containing 50% glycerol, 0.5% BSA and 0.02% sodium azide.
<b>Source</b>	Polyclonal, Rabbit,IgG
<b>Purification</b>	The antibody was affinity-purified from rabbit antiserum by affinity-chromatography using epitope-specific immunogen.
<b>Dilution</b>	Western Blot: 1/500 - 1/2000. ELISA: 1/40000. Not yet tested in other applications.
<b>Concentration</b>	1 mg/ml
<b>Purity</b>	≥90%
<b>Storage Stability</b>	-20°C/1 year
<b>Synonyms</b>	CEP57; KIAA0092; TSP57; Centrosomal protein of 57 kDa; Cep57; FGF2-interacting protein; Testis-specific protein 57; Translokin
<b>Observed Band</b>	50kD
<b>Cell Pathway</b>	Nucleus . Cytoplasm. Cytoplasm, cytoskeleton, microtubule organizing center, centrosome .
<b>Tissue Specificity</b>	Ubiquitous.
<b>Function</b>	function:Mediates nuclear translocation and mitogenic activity of the internalized growth factor FGF2.,similarity:Belongs to the translokin family.,subcellular location:Associates with microtubules and the centrosome.,subunit:Homodimer. Interacts with FGF2 and RAP80. Does not interact with FGF1 or FGF2 isoform 24 kDa.,tissue specificity:Ubiquitous.,
<b>Background</b>	This gene encodes a cytoplasmic protein called Translokin. This protein localizes to the centrosome and has a function in microtubular stabilization. The N-terminal half of this protein is required for its centrosome localization and for its multimerization, and the C-terminal half is required for nucleating, bundling and

Nanjing BYabscience technology Co.,Ltd



anchoring microtubules to the centrosomes. This protein specifically interacts with fibroblast growth factor 2 (FGF2), sorting nexin 6, Ran-binding protein M and the kinesins KIF3A and KIF3B, and thus mediates the nuclear translocation and mitogenic activity of the FGF2. It also interacts with cyclin D1 and controls nucleocytoplasmic distribution of the cyclin D1 in quiescent cells. This protein is crucial for maintaining correct chromosomal number during cell division. Mutations in this gene cause mosaic variegated aneuploidy syndrome, a rare autosomal recessive disorder. Multiple

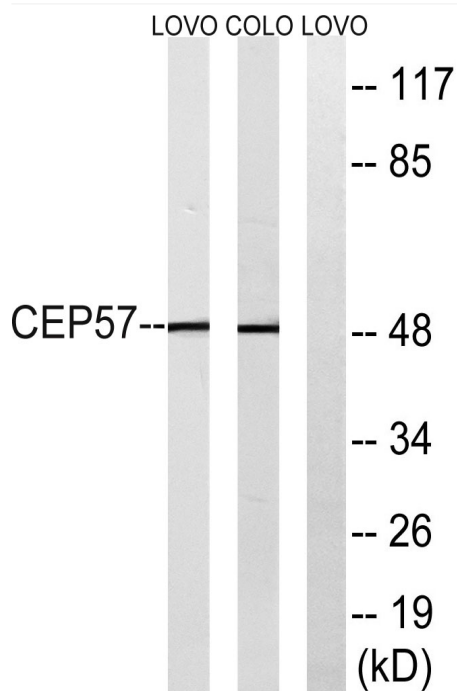
**matters needing attention**

Avoid repeated freezing and thawing!

**Usage suggestions**

This product can be used in immunological reaction related experiments. For more information, please consult technical personnel.

## Products Images



Western blot analysis of lysates from COLO and LOVO cells, using CEP57 Antibody. The lane on the right is blocked with the synthesized peptide.