



CEP152 Polyclonal Antibody

Catalog No	BYab-03757
Isotype	IgG
Reactivity	Human;Mouse
Applications	WB;IHC;IF;ELISA
Gene Name	CEP152
Protein Name	Centrosomal protein of 152 kDa
Immunogen	The antiserum was produced against synthesized peptide derived from human CEP152. AA range:841-890
Specificity	CEP152 Polyclonal Antibody detects endogenous levels of CEP152 protein.
Formulation	Liquid in PBS containing 50% glycerol, 0.5% BSA and 0.02% sodium azide.
Source	Polyclonal, Rabbit,IgG
Purification	The antibody was affinity-purified from rabbit antiserum by affinity-chromatography using epitope-specific immunogen.
Dilution	WB: 1/500 - 1/2000. IHC: 1/100 - 1/300. ELISA: 1/40000.. IF 1:50-200
Concentration	1 mg/ml
Purity	≥90%
Storage Stability	-20°C/1 year
Synonyms	CEP152; KIAA0912; Centrosomal protein of 152 kDa; Cep152
Observed Band	140kD
Cell Pathway	Cytoplasm, cytoskeleton, microtubule organizing center, centrosome . Cytoplasm, cytoskeleton, microtubule organizing center, centrosome, centriole . Colocalizes with CDK5RAP2, WDR62 and CEP63 in a discrete ring around the proximal end of the parental centriole. At this site, a cohesive structure is predicted to engage parental centrioles and procentrioles (PubMed:21983783, PubMed:26297806). Localizes to the deuterosome (By similarity). Localizes to pericentriolar material (PCM) (PubMed:26337392). .
Tissue Specificity	Bladder,Brain,Heart,Lung,Testis,
Function	sequence caution:Contaminating sequence. Potential poly-A sequence.,
Background	centrosomal protein 152(CEP152) Homo sapiens This gene encodes a protein that is thought to be involved with centrosome function. Mutations in this gene have been associated with primary microcephaly (MCPH4). Alternative

Nanjing BYabscience technology Co.,Ltd



splicing results in multiple transcript variants. [provided by RefSeq, Aug 2010],

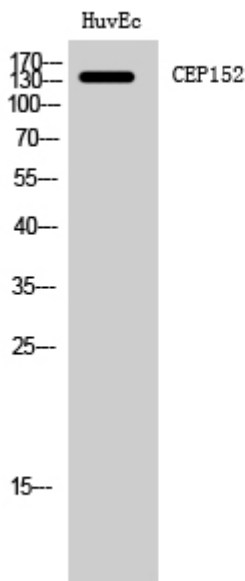
matters needing attention

Avoid repeated freezing and thawing!

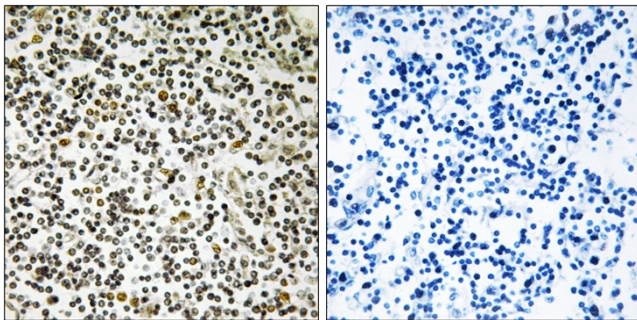
Usage suggestions

This product can be used in immunological reaction related experiments. For more information, please consult technical personnel.

Products Images



Western Blot analysis of HuvEc cells using CEP152 Polyclonal Antibody



Immunohistochemistry analysis of paraffin-embedded human lymph node tissue, using CEP152 Antibody. The picture on the right is blocked with the synthesized peptide.