



# Cdc42EP4 Polyclonal Antibody

<b>Catalog No</b>	BYab-03753
<b>Isotype</b>	IgG
<b>Reactivity</b>	Human;Rat;Mouse;
<b>Applications</b>	WB;IHC;IF;ELISA
<b>Gene Name</b>	CDC42EP4
<b>Protein Name</b>	Cdc42 effector protein 4
<b>Immunogen</b>	The antiserum was produced against synthesized peptide derived from human BORG4. AA range:201-250
<b>Specificity</b>	Cdc42EP4 Polyclonal Antibody detects endogenous levels of Cdc42EP4 protein.
<b>Formulation</b>	Liquid in PBS containing 50% glycerol, 0.5% BSA and 0.02% sodium azide.
<b>Source</b>	Polyclonal, Rabbit,IgG
<b>Purification</b>	The antibody was affinity-purified from rabbit antiserum by affinity-chromatography using epitope-specific immunogen.
<b>Dilution</b>	WB: 1/500 - 1/2000. IHC: 1/100 - 1/300. ELISA: 1/20000.. IF 1:50-200
<b>Concentration</b>	1 mg/ml
<b>Purity</b>	≥90%
<b>Storage Stability</b>	-20°C/1 year
<b>Synonyms</b>	CDC42EP4; BORG4; CEP4; Cdc42 effector protein 4; Binder of Rho GTPases 4
<b>Observed Band</b>	36kD
<b>Cell Pathway</b>	Endomembrane system; Peripheral membrane protein. Cytoplasm, cytoskeleton.
<b>Tissue Specificity</b>	Not detected in any of the adult tissues tested. May be expressed only in fetal or embryonic tissues.
<b>Function</b>	function:Probably involved in the organization of the actin cytoskeleton. May act downstream of CDC42 to induce actin filament assembly leading to cell shape changes. Induces pseudopodia formation, when overexpressed in fibroblasts.,similarity:Belongs to the BORG/CEP family.,similarity:Contains 1 CRIB domain.,subunit:Interacts with CDC42 and RHOQ, in a GTP-dependent manner.,tissue specificity:Not detected in any of the adult tissues tested. May be expressed only in fetal or embryonic tissues.,
<b>Background</b>	The product of this gene is a member of the CDC42-binding protein family. Members of this family interact with Rho family GTPases and regulate the organization of the actin cytoskeleton. This protein has been shown to bind both

Nanjing BYabscience technology Co.,Ltd



CDC42 and TC10 GTPases in a GTP-dependent manner. When overexpressed in fibroblasts, this protein was able to induce pseudopodia formation, which suggested a role in inducing actin filament assembly and cell shape control. [provided by RefSeq, Jul 2008],

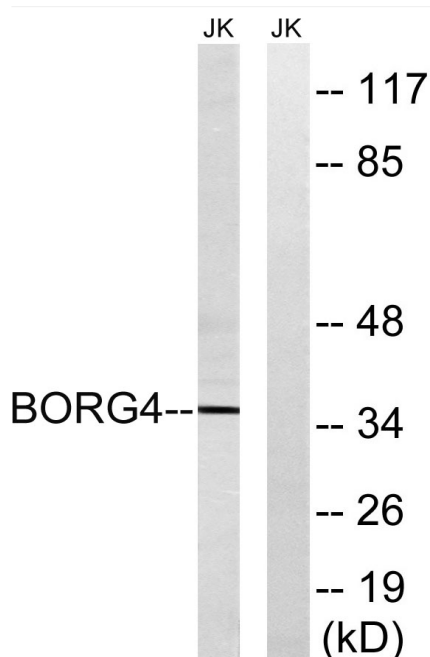
**matters needing attention**

Avoid repeated freezing and thawing!

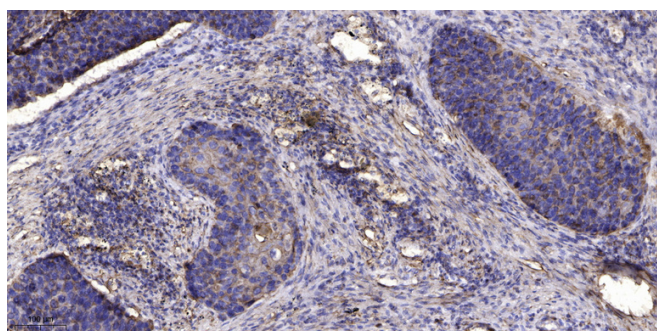
**Usage suggestions**

This product can be used in immunological reaction related experiments. For more information, please consult technical personnel.

**Products Images**



Western blot analysis of lysates from Jurkat cells, using BORG4 Antibody. The lane on the right is blocked with the synthesized peptide.



Immunohistochemical analysis of paraffin-embedded human Squamous cell carcinoma of lung. 1, Antibody was diluted at 1:200(4° overnight). 2, Tris-EDTA,pH9.0 was used for antigen retrieval. 3,Secondary antibody was diluted at 1:200(room temperature, 45min).