



CAT-4 Polyclonal Antibody

Catalog No	BYab-03744
Isotype	IgG
Reactivity	Human;Rat;Mouse;
Applications	WB;ELISA
Gene Name	SLC7A4
Protein Name	Cationic amino acid transporter 4
Immunogen	The antiserum was produced against synthesized peptide derived from human SLC7A4. AA range:561-610
Specificity	CAT-4 Polyclonal Antibody detects endogenous levels of CAT-4 protein.
Formulation	Liquid in PBS containing 50% glycerol, 0.5% BSA and 0.02% sodium azide.
Source	Polyclonal, Rabbit,IgG
Purification	The antibody was affinity-purified from rabbit antiserum by affinity-chromatography using epitope-specific immunogen.
Dilution	Western Blot: 1/500 - 1/2000. ELISA: 1/10000. Not yet tested in other applications.
Concentration	1 mg/ml
Purity	≥90%
Storage Stability	-20°C/1 year
Synonyms	SLC7A4; Cationic amino acid transporter 4; CAT-4; CAT4; Solute carrier family 7 member 4
Observed Band	70kD
Cell Pathway	Membrane ; Multi-pass membrane protein .
Tissue Specificity	Brain,Placenta,
Function	function:Involved in the transport of the cationic amino acids (arginine, lysine and ornithine).,similarity:Belongs to the amino acid-polyamine-organocation (APC) superfamily. Cationic amino acid transporter (CAT) (TC 2.A.3.3) family.,
Background	function:Involved in the transport of the cationic amino acids (arginine, lysine and ornithine).,similarity:Belongs to the amino acid-polyamine-organocation (APC) superfamily. Cationic amino acid transporter (CAT) (TC 2.A.3.3) family.,
matters needing attention	Avoid repeated freezing and thawing!

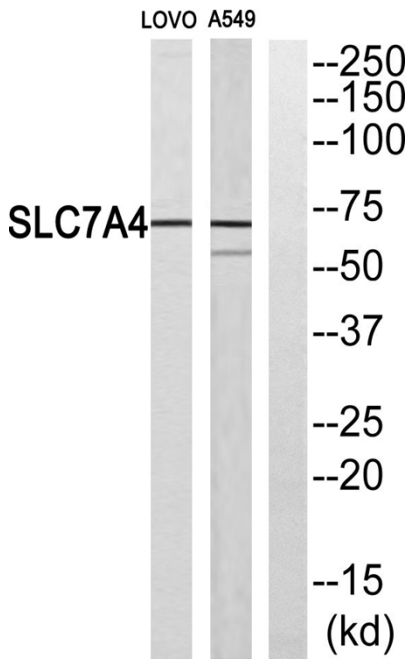
Nanjing BYabscience technology Co.,Ltd



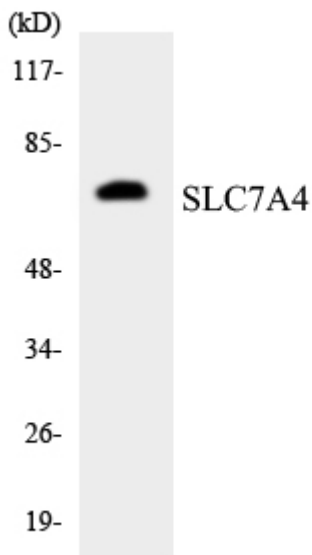
Usage suggestions

This product can be used in immunological reaction related experiments. For more information, please consult technical personnel.

Products Images



Western blot analysis of SLC7A4 Antibody. The lane on the right is blocked with the SLC7A4 peptide.



Western blot analysis of the lysates from K562 cells using SLC7A4 antibody.