



BAIAP2L2 Polyclonal Antibody

Catalog No	BYab-03739
Isotype	IgG
Reactivity	Human;Mouse
Applications	WB;IHC;IF;ELISA
Gene Name	BAIAP2L2
Protein Name	Brain-specific angiogenesis inhibitor 1-associated protein 2-like protein 2
Immunogen	The antiserum was produced against synthesized peptide derived from human BAIAP2L2. AA range:111-160
Specificity	BAIAP2L2 Polyclonal Antibody detects endogenous levels of BAIAP2L2 protein.
Formulation	Liquid in PBS containing 50% glycerol, 0.5% BSA and 0.02% sodium azide.
Source	Polyclonal, Rabbit,IgG
Purification	The antibody was affinity-purified from rabbit antiserum by affinity-chromatography using epitope-specific immunogen.
Dilution	WB: 1/500 - 1/2000. IHC: 1/100 - 1/300. ELISA: 1/40000.. IF 1:50-200
Concentration	1 mg/ml
Purity	≥90%
Storage Stability	-20°C/1 year
Synonyms	BAIAP2L2; Brain-specific angiogenesis inhibitor 1-associated protein 2-like protein 2; BAI1-associated protein 2-like protein 2; Planar intestinal- and kidney-specific BAR domain protein; Pinkbar
Observed Band	52kD
Cell Pathway	Cell membrane ; Peripheral membrane protein . Cell junction . Cytoplasmic vesicle membrane . Localizes to RAB13-positive vesicles and to the plasma membrane at intercellular contacts.
Tissue Specificity	Expressed in the epithelial layer of the intestine (at protein level).
Function	domain:The IMD domain is predicted to have a helical structure. It may induce actin bundling and filopodia formation.,function:May function as an adapter protein .,similarity:Contains 1 IMD (IRSp53/MIM homology) domain.,similarity:Contains 1 SH3 domain.,
Background	The protein encoded by this gene binds phosphoinositides and promotes the formation of planar or curved membrane structures. The encoded protein is found in RAB13-positive vesicles and at intercellular contacts with the plasma

Nanjing BYabscience technology Co.,Ltd



membrane. [provided by RefSeq, Dec 2012],

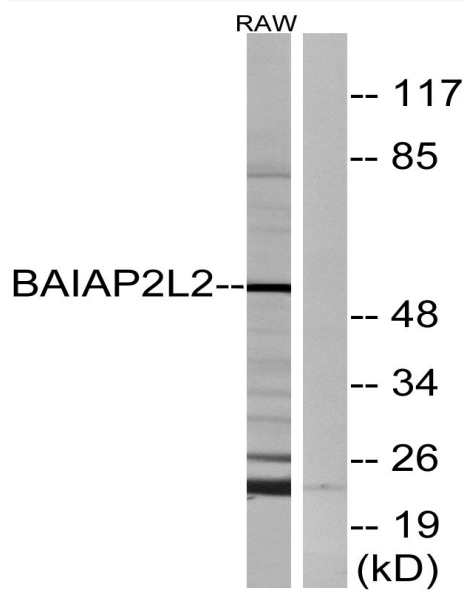
matters needing attention

Avoid repeated freezing and thawing!

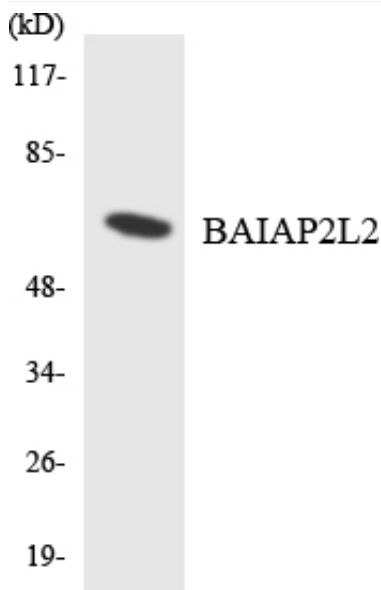
Usage suggestions

This product can be used in immunological reaction related experiments. For more information, please consult technical personnel.

Products Images

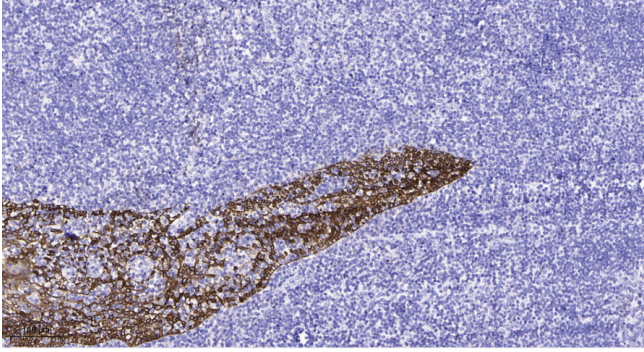


Western blot analysis of lysates from RAW264.7 cells, using BAIAP2L2 Antibody. The lane on the right is blocked with the synthesized peptide.



Western blot analysis of the lysates from HT-29 cells using BAIAP2L2 antibody.

Nanjing BYabscience technology Co.,Ltd



Immunohistochemical analysis of paraffin-embedded human tonsil. 1, Antibody was diluted at 1:200(4° overnight). 2, Tris-EDTA,pH9.0 was used for antigen retrieval. 3,Secondary antibody was diluted at 1:200(room temperature, 45min).