



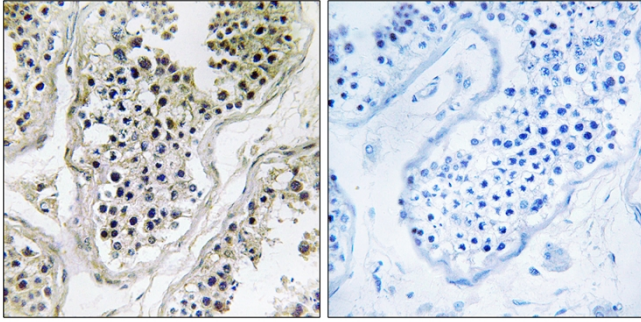
Ataxin-7L1 Polyclonal Antibody

Catalog No	BYab-03735
Isotype	IgG
Reactivity	Human;Mouse
Applications	IHC;IF;ELISA
Gene Name	ATXN7L1
Protein Name	Ataxin-7-like protein 1
Immunogen	The antiserum was produced against synthesized peptide derived from human ATXN7L1. AA range:441-490
Specificity	Ataxin-7L1 Polyclonal Antibody detects endogenous levels of Ataxin-7L1 protein.
Formulation	Liquid in PBS containing 50% glycerol, 0.5% BSA and 0.02% sodium azide.
Source	Polyclonal, Rabbit,IgG
Purification	The antibody was affinity-purified from rabbit antiserum by affinity-chromatography using epitope-specific immunogen.
Dilution	IHC: 1/100 - 1/300. ELISA: 1/10000.. IF 1:50-200
Concentration	1 mg/ml
Purity	≥90%
Storage Stability	-20°C/1 year
Synonyms	ATXN7L1; ATXN7L4; KIAA1218; Ataxin-7-like protein 1; Ataxin-7-like protein 4
Observed Band	
Cell Pathway	
Tissue Specificity	Brain,Lymph,Placenta,Testis,
Function	similarity:Contains 1 SCA7 domain.,
Background	similarity:Contains 1 SCA7 domain.,
matters needing attention	Avoid repeated freezing and thawing!
Usage suggestions	This product can be used in immunological reaction related experiments. For more information, please consult technical personnel.

Nanjing BYabscience technology Co.,Ltd



Products Images



Immunohistochemistry analysis of paraffin-embedded human testis tissue, using ATXN7L1 Antibody. The picture on the right is blocked with the synthesized peptide.