



Ataxin-2 Polyclonal Antibody

Catalog No	BYab-03733
Isotype	IgG
Reactivity	Human;Rat;Mouse;
Applications	WB;IHC;IF;ELISA
Gene Name	ATXN2
Protein Name	Ataxin-2
Immunogen	The antiserum was produced against synthesized peptide derived from human ATXN2. AA range:731-780
Specificity	Ataxin-2 Polyclonal Antibody detects endogenous levels of Ataxin-2 protein.
Formulation	Liquid in PBS containing 50% glycerol, 0.5% BSA and 0.02% sodium azide.
Source	Polyclonal, Rabbit,IgG
Purification	The antibody was affinity-purified from rabbit antiserum by affinity-chromatography using epitope-specific immunogen.
Dilution	WB: 1/500 - 1/2000. IHC: 1/100 - 1/300. ELISA: 1/20000.. IF 1:50-200
Concentration	1 mg/ml
Purity	≥90%
Storage Stability	-20°C/1 year
Synonyms	ATXN2; ATX2; SCA2; TNRC13; Ataxin-2; Spinocerebellar ataxia type 2 protein; Trinucleotide repeat-containing gene 13 protein
Observed Band	140kD
Cell Pathway	Cytoplasm .
Tissue Specificity	Expressed in the brain, heart, liver, skeletal muscle, pancreas and placenta. Isoform 1 is predominant in the brain and spinal cord. Isoform 4 is more abundant in the cerebellum. In the brain, broadly expressed in the amygdala, caudate nucleus, corpus callosum, hippocampus, hypothalamus, substantia nigra, subthalamic nucleus and thalamus.
Function	disease:Defects in ATXN2 are the cause of spinocerebellar ataxia type 2 (SCA2) [MIM:183090]; also known as olivopontocerebellar atrophy II (OPCA II or OPCA2). Spinocerebellar ataxia is a clinically and genetically heterogeneous group of cerebellar disorders. Patients show progressive incoordination of gait and often poor coordination of hands, speech and eye movements, due to cerebellum degeneration with variable involvement of the brainstem and spinal cord. SCA2 belongs to the autosomal dominant cerebellar ataxias type I (ADCA I)

Nanjing BYabscience technology Co.,Ltd



which are characterized by cerebellar ataxia in combination with additional clinical features like optic atrophy, ophthalmoplegia, bulbar and extrapyramidal signs, peripheral neuropathy and dementia. SCA2 is characterized by hyporeflexia, myoclonus and action tremor and dopamine-responsive parkinsonism. SCA2 is caused by expansion of a CAG repeat in the coding

Background

ataxin 2(ATXN2) Homo sapiens This gene belongs to a group of genes that is associated with microsatellite-expansion diseases, a class of neurological and neuromuscular disorders caused by expansion of short stretches of repetitive DNA. The protein encoded by this gene has two globular domains near the N-terminus, one of which contains a clathrin-mediated trans-Golgi signal and an endoplasmic reticulum exit signal. The protein is primarily localized to the Golgi apparatus, with deletion of the Golgi and endoplasmic reticulum signals resulting in abnormal subcellular localization. In addition, the N-terminal region contains a polyglutamine tract of 14-31 residues that can be expanded in the pathogenic state to 32-200 residues. Intermediate length expansions of this tract increase susceptibility to amyotrophic lateral sclerosis, while long expansions of this tract result in spinocerebellar ataxia-2, an autosomal-dominantly inherited, neurodegener

matters needing attention

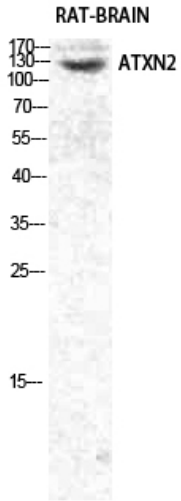
Avoid repeated freezing and thawing!

Usage suggestions

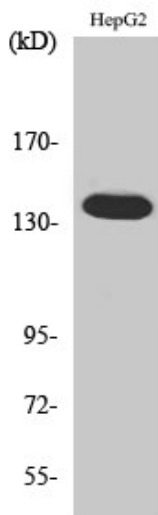
This product can be used in immunological reaction related experiments. For more information, please consult technical personnel.



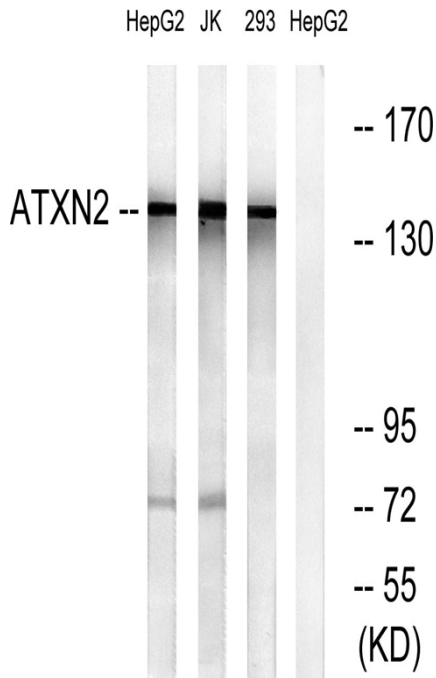
Products Images



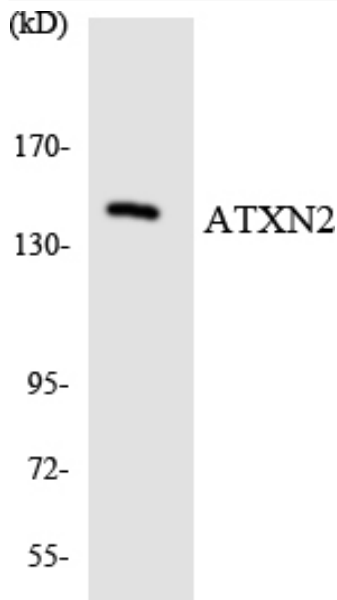
Western Blot analysis of various cells using Ataxin-2
Polyclonal Antibody diluted at 1:1000



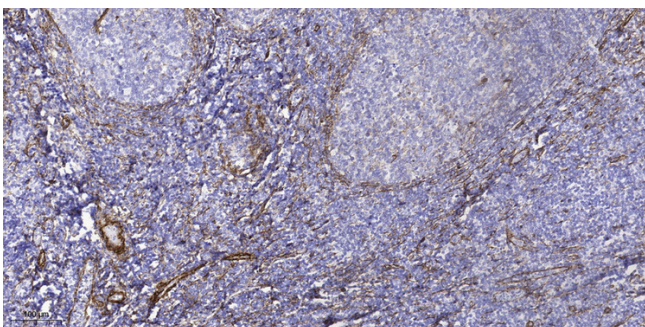
Western Blot analysis of 293 cells using Ataxin-2
Polyclonal Antibody diluted at 1:1000



Western blot analysis of lysates from HepG2, Jurkat, and 293 cells, using ATXN2 Antibody. The lane on the right is blocked with the synthesized peptide.



Western blot analysis of the lysates from HepG2 cells using ATXN2 antibody.



Immunohistochemical analysis of paraffin-embedded human tonsil. 1, Tris-EDTA, pH9.0 was used for antigen retrieval. 2 Antibody was diluted at 1:200(4° overnight). 3, Secondary antibody was diluted at 1:200(room temperature, 45min).