



# Arylsulfatase I Polyclonal Antibody

<b>Catalog No</b>	BYab-03730
<b>Isotype</b>	IgG
<b>Reactivity</b>	Human;Monkey
<b>Applications</b>	WB;IHC;IF;ELISA
<b>Gene Name</b>	ARSI
<b>Protein Name</b>	Arylsulfatase I
<b>Immunogen</b>	The antiserum was produced against synthesized peptide derived from human ARSI. AA range:311-360
<b>Specificity</b>	Arylsulfatase I Polyclonal Antibody detects endogenous levels of Arylsulfatase I protein.
<b>Formulation</b>	Liquid in PBS containing 50% glycerol, 0.5% BSA and 0.02% sodium azide.
<b>Source</b>	Polyclonal, Rabbit,IgG
<b>Purification</b>	The antibody was affinity-purified from rabbit antiserum by affinity-chromatography using epitope-specific immunogen.
<b>Dilution</b>	Western Blot: 1/500 - 1/2000. Immunohistochemistry: 1/100 - 1/300. Immunofluorescence: 1/200 - 1/1000. ELISA: 1/40000. Not yet tested in other applications.
<b>Concentration</b>	1 mg/ml
<b>Purity</b>	≥90%
<b>Storage Stability</b>	-20°C/1 year
<b>Synonyms</b>	ARSI; Arylsulfatase I; ASI
<b>Observed Band</b>	64kD
<b>Cell Pathway</b>	Secreted . Endoplasmic reticulum . Localized in the intracellular granular structures.
<b>Tissue Specificity</b>	Expressed in placenta, in embryonic stem cells, fetal eyes and lens.
<b>Function</b>	cofactor: Binds 1 calcium ion per subunit.,PTM:The conversion to 3-oxoalanine (also known as C-formylglycine, FGly), of a serine or cysteine residue in prokaryotes and of a cysteine residue in eukaryotes, is critical for catalytic activity.,similarity: Belongs to the sulfatase family.,
<b>Background</b>	This gene encodes a protein that belongs to a large family of sulfatases that hydrolyze sulfate esters and sulfamates. Members of this family play a role in several cellular processes, including hormone synthesis, cell signaling in development and degradation of macromolecules. The protein encoded by this gene is thought to be secreted, and to function in extracellular space. [provided by

Nanjing BYabscience technology Co.,Ltd



RefSeq, Jul 2016],

**matters needing attention**

Avoid repeated freezing and thawing!

**Usage suggestions**

This product can be used in immunological reaction related experiments. For more information, please consult technical personnel.

Nanjing BYabscience technology Co.,Ltd

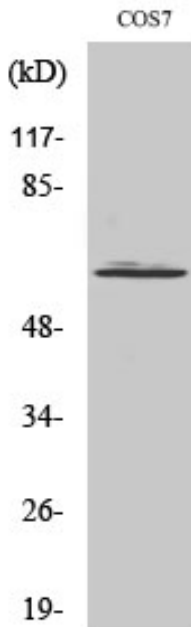
网址: [www.njbybio.com](http://www.njbybio.com)

官方热线: 025-5229-8998

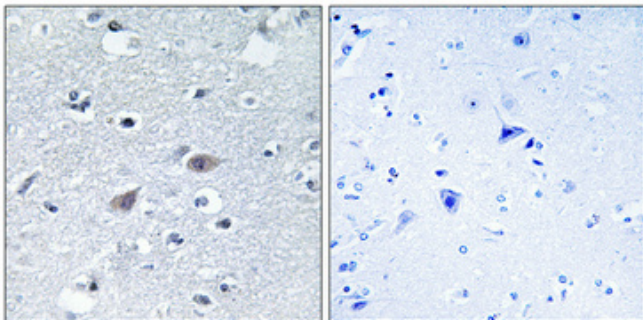
监督电话: 15950492658



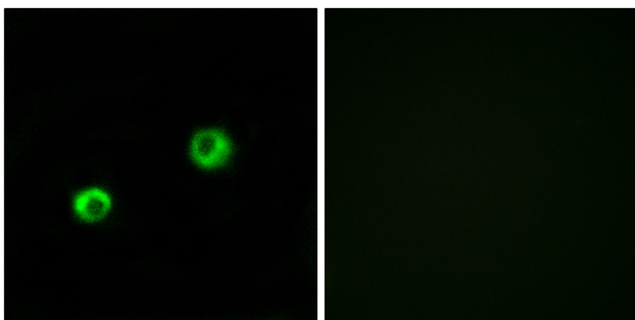
## Products Images



Western Blot analysis of various cells using Arylsulfatase I Polyclonal Antibody

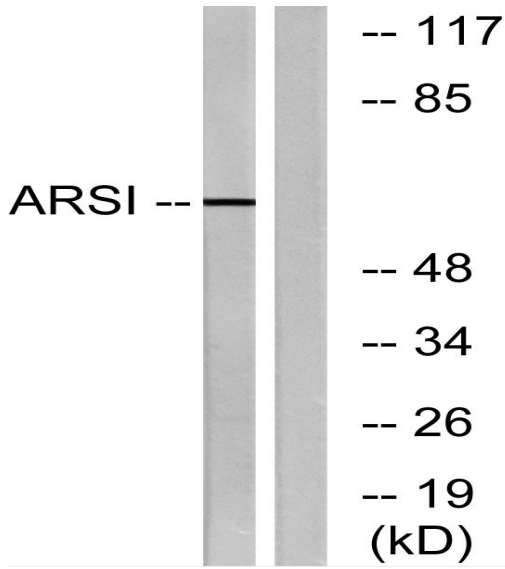


Immunohistochemical analysis of paraffin-embedded Human brain. Antibody was diluted at 1:100(4° overnight). High-pressure and temperature Tris-EDTA, pH8.0 was used for antigen retrieval. Negative control (right) obtained from antibody was pre-absorbed by immunogen peptide.

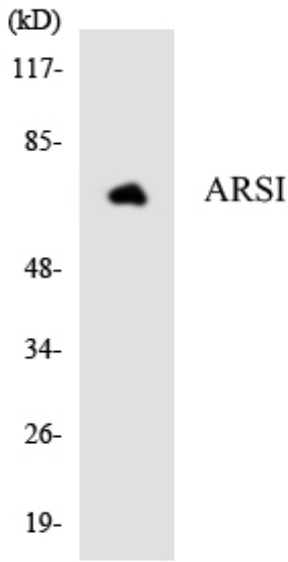


Immunofluorescence analysis of MCF7 cells, using ARSI Antibody. The picture on the right is blocked with the synthesized peptide.

Nanjing BYabscience technology Co.,Ltd



Western blot analysis of lysates from COS7 cells, using ARSI Antibody. The lane on the right is blocked with the synthesized peptide.



Western blot analysis of the lysates from HepG2 cells using ARSI antibody.