



Arylsulfatase F Polyclonal Antibody

Catalog No	BYab-03728
Isotype	IgG
Reactivity	Human;Monkey
Applications	WB;IHC;IF;ELISA
Gene Name	ARSF
Protein Name	Arylsulfatase F
Immunogen	The antiserum was produced against synthesized peptide derived from human ARSF. AA range:301-350
Specificity	Arylsulfatase F Polyclonal Antibody detects endogenous levels of Arylsulfatase F protein.
Formulation	Liquid in PBS containing 50% glycerol, 0.5% BSA and 0.02% sodium azide.
Source	Polyclonal, Rabbit,IgG
Purification	The antibody was affinity-purified from rabbit antiserum by affinity-chromatography using epitope-specific immunogen.
Dilution	WB: 1/500 - 1/2000. IHC: 1/100 - 1/300. ELISA: 1/40000.. IF 1:50-200
Concentration	1 mg/ml
Purity	≥90%
Storage Stability	-20°C/1 year
Synonyms	ARSF; Arylsulfatase F; ASF
Observed Band	60kD
Cell Pathway	Secreted .
Tissue Specificity	Fetal brain,Kidney,
Function	cofactor: Binds 1 calcium ion per subunit.,enzyme regulation:Not inhibited by DHEAS or warfarin.,PTM:The conversion to 3-oxoalanine (also known as C-formylglycine, FGly), of a serine or cysteine residue in prokaryotes and of a cysteine residue in eukaryotes, is critical for catalytic activity.,similarity:Belongs to the sulfatase family.,
Background	This gene is a member of the sulfatase family, and more specifically, the arylsulfatase subfamily. Members of the subfamily share similarity in sequence and splice sites, and are clustered together on chromosome X, suggesting that they are derived from recent gene duplication events. Sulfatases are essential for the correct composition of bone and cartilage matrix. The activity of this protein,

Nanjing BYabscience technology Co.,Ltd



unlike that of arylsulfatase E, is not inhibited by warfarin. Multiple alternatively spliced variants, encoding the same protein, have been identified.[provided by RefSeq, Jan 2011],

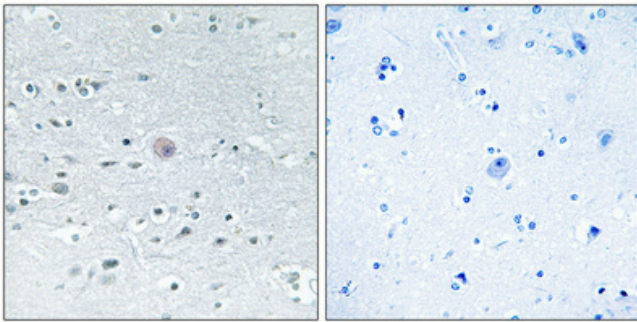
matters needing attention

Avoid repeated freezing and thawing!

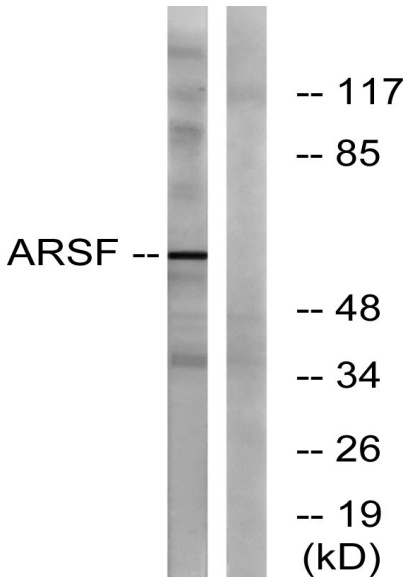
Usage suggestions

This product can be used in immunological reaction related experiments. For more information, please consult technical personnel.

Products Images



Immunohistochemical analysis of paraffin-embedded Human brain. Antibody was diluted at 1:100(4° overnight). High-pressure and temperature Tris-EDTA,pH8.0 was used for antigen retrieval. Negative contrl (right) obtained from antibody was pre-absorbed by immunogen peptide.



Western blot analysis of lysates from COS7 cells, using ARSF Antibody. The lane on the right is blocked with the synthesized peptide.