



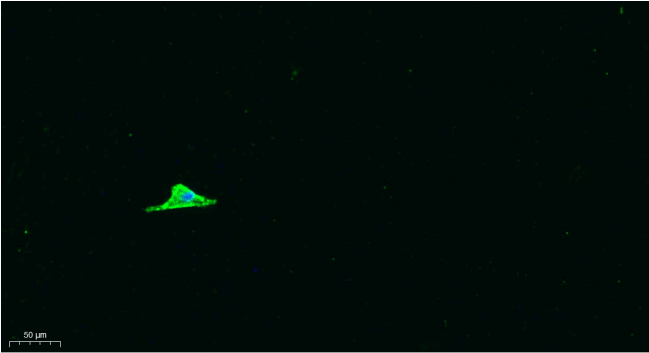
# Arrdc1 Polyclonal Antibody

<b>Catalog No</b>	BYab-03718
<b>Isotype</b>	IgG
<b>Reactivity</b>	Human;Mouse;Rat
<b>Applications</b>	WB IF;ELISA
<b>Gene Name</b>	ARRDC1
<b>Protein Name</b>	Arrestin domain-containing protein 1
<b>Immunogen</b>	The antiserum was produced against synthesized peptide derived from human ARRD1. AA range:167-216
<b>Specificity</b>	Arrdc1 Polyclonal Antibody detects endogenous levels of Arrdc1 protein.
<b>Formulation</b>	Liquid in PBS containing 50% glycerol, 0.5% BSA and 0.02% sodium azide.
<b>Source</b>	Polyclonal, Rabbit,IgG
<b>Purification</b>	The antibody was affinity-purified from rabbit antiserum by affinity-chromatography using epitope-specific immunogen.
<b>Dilution</b>	WB 1:500-2000 IF 1:100-300 ELISA 1:5000-20000 Not yet tested in other applications.
<b>Concentration</b>	1 mg/ml
<b>Purity</b>	≥90%
<b>Storage Stability</b>	-20°C/1 year
<b>Synonyms</b>	ARRDC1; Arrestin domain-containing protein 1
<b>Observed Band</b>	48kD
<b>Cell Pathway</b>	Cell membrane . Also found in extracellular vesicles different from exosomes. .
<b>Tissue Specificity</b>	Blood,Brain,
<b>Function</b>	similarity:Belongs to the arrestin family.,
<b>Background</b>	similarity:Belongs to the arrestin family.,
<b>matters needing attention</b>	Avoid repeated freezing and thawing!
<b>Usage suggestions</b>	This product can be used in immunological reaction related experiments. For more information, please consult technical personnel.

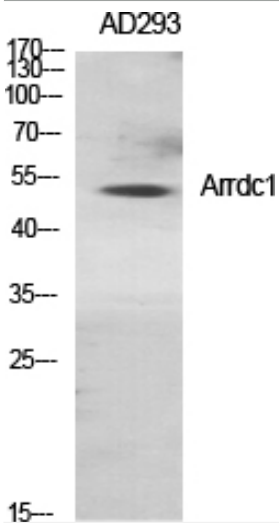
**Nanjing BYabscience technology Co.,Ltd**



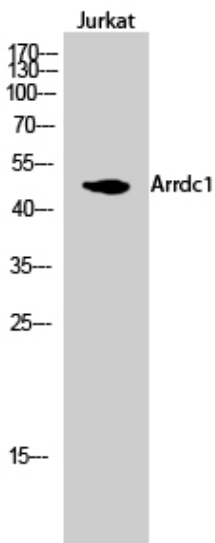
## Products Images



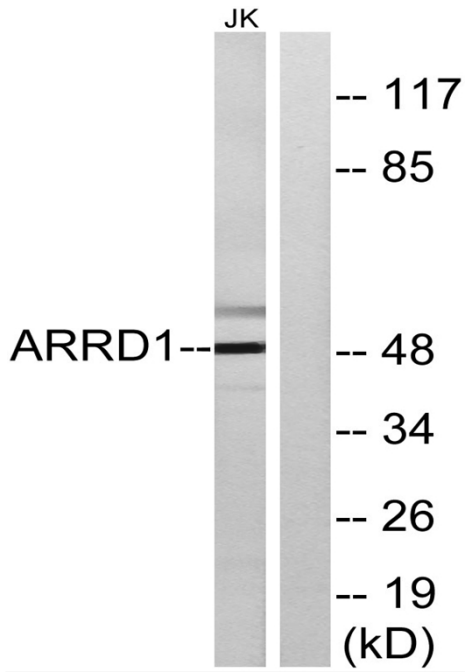
Immunofluorescence analysis of A549. 1,primary Antibody was diluted at 1:200(4°C overnight). 2, Goat Anti Rabbit IgG (H&L) - Alexa Fluor 488 Secondary antibody was diluted at 1:1000(room temperature, 50min).3, Picture B: DAPI(blue) 10min.



Western Blot analysis of various cells using Arrdc1 Polyclonal Antibody diluted at 1:1000



Western Blot analysis of Jurkat cells using Arrdc1 Polyclonal Antibody diluted at 1:1000



Western blot analysis of lysates from Jurkat cells, using ARRD1 Antibody. The lane on the right is blocked with the synthesized peptide.