



# ARPP-21 Polyclonal Antibody

<b>Catalog No</b>	BYab-03717
<b>Isotype</b>	IgG
<b>Reactivity</b>	Human;Mouse
<b>Applications</b>	WB;IHC;IF;ELISA
<b>Gene Name</b>	ARPP21
<b>Protein Name</b>	cAMP-regulated phosphoprotein 21
<b>Immunogen</b>	The antiserum was produced against synthesized peptide derived from human ARPP21. AA range:211-260
<b>Specificity</b>	ARPP-21 Polyclonal Antibody detects endogenous levels of ARPP-21 protein.
<b>Formulation</b>	Liquid in PBS containing 50% glycerol, 0.5% BSA and 0.02% sodium azide.
<b>Source</b>	Polyclonal, Rabbit,IgG
<b>Purification</b>	The antibody was affinity-purified from rabbit antiserum by affinity-chromatography using epitope-specific immunogen.
<b>Dilution</b>	WB: 1/500 - 1/2000. IHC: 1/100 - 1/300. ELISA: 1/5000.. IF 1:50-200
<b>Concentration</b>	1 mg/ml
<b>Purity</b>	≥90%
<b>Storage Stability</b>	-20°C/1 year
<b>Synonyms</b>	ARPP21; TARPP; cAMP-regulated phosphoprotein 21; ARPP-21; Thymocyte cAMP-regulated phosphoprotein
<b>Observed Band</b>	80kD
<b>Cell Pathway</b>	Cytoplasm .
<b>Tissue Specificity</b>	Isoform 2 is expressed in brain. Isoform 1 is present in immature thymocytes (at protein level).
<b>Function</b>	function:Isoform 2 may act as a competitive inhibitor of calmodulin-dependent enzymes such as calcineurin in neurons.,PTM:Isoform 1 is methylated by CARM1 in immature thymocytes.,PTM:Phosphorylation at Ser-56 favors interaction with CALM1.,similarity:Contains 1 R3H domain.,subunit:Interacts with CALM1.,tissue specificity:Isoform 2 is expressed in brain. Isoform 1 is present in immature thymocytes (at protein level).,
<b>Background</b>	This gene encodes a cAMP-regulated phosphoprotein. The encoded protein is enriched in the caudate nucleus and cerebellar cortex. A similar protein in mouse may be involved in regulating the effects of dopamine in the basal ganglia.

Nanjing BYabscience technology Co.,Ltd



Alternate splicing results in multiple transcript variants. [provided by RefSeq, Jun 2012],

**matters needing attention**

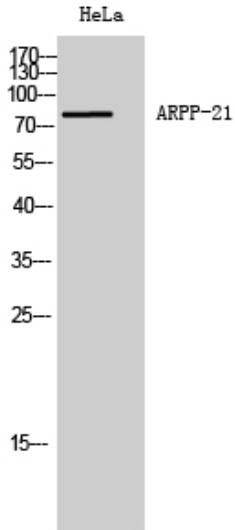
Avoid repeated freezing and thawing!

**Usage suggestions**

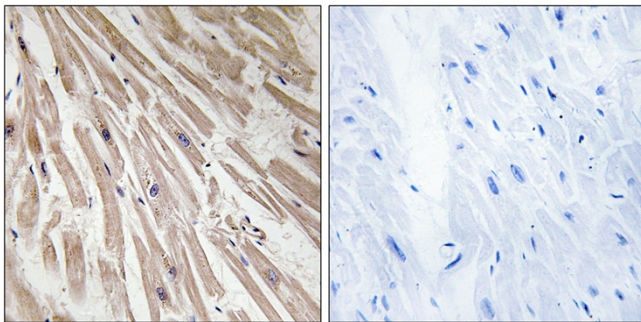
This product can be used in immunological reaction related experiments. For more information, please consult technical personnel.



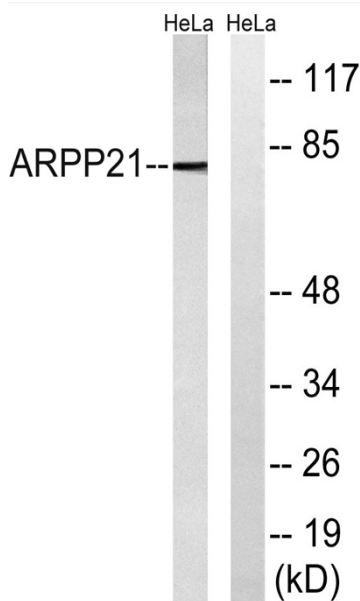
## Products Images



Western Blot analysis of HeLa cells using ARPP-21 Polyclonal Antibody diluted at 1:1000



Immunohistochemistry analysis of paraffin-embedded human heart tissue, using ARPP21 Antibody. The picture on the right is blocked with the synthesized peptide.



Western blot analysis of lysates from HeLa cells, using ARPP21 Antibody. The lane on the right is blocked with the synthesized peptide.

Nanjing BYabscience technology Co.,Ltd