



# ARMCX1 Polyclonal Antibody

<b>Catalog No</b>	BYab-03714
<b>Isotype</b>	IgG
<b>Reactivity</b>	Human;Mouse;Rat
<b>Applications</b>	WB;IHC;IF;ELISA
<b>Gene Name</b>	ARMCX1
<b>Protein Name</b>	Armadillo repeat-containing X-linked protein 1
<b>Immunogen</b>	The antiserum was produced against synthesized peptide derived from human ARMX1. AA range:1-50
<b>Specificity</b>	ARMCX1 Polyclonal Antibody detects endogenous levels of ARMCX1 protein.
<b>Formulation</b>	Liquid in PBS containing 50% glycerol, 0.5% BSA and 0.02% sodium azide.
<b>Source</b>	Polyclonal, Rabbit,IgG
<b>Purification</b>	The antibody was affinity-purified from rabbit antiserum by affinity-chromatography using epitope-specific immunogen.
<b>Dilution</b>	Western Blot: 1/500 - 1/2000. Immunohistochemistry: 1/100 - 1/300. Immunofluorescence: 1/200 - 1/1000. ELISA: 1/20000. Not yet tested in other applications.
<b>Concentration</b>	1 mg/ml
<b>Purity</b>	≥90%
<b>Storage Stability</b>	-20°C/1 year
<b>Synonyms</b>	ARMCX1; ALEX1; AD032; Armadillo repeat-containing X-linked protein 1; ARM protein lost in epithelial cancers on chromosome X 1; Protein ALEX1
<b>Observed Band</b>	49kD
<b>Cell Pathway</b>	Mitochondrion . Mitochondrion outer membrane ; Single-pass membrane protein .
<b>Tissue Specificity</b>	Expressed at high levels ovary, heart, testis, prostate, brain, spleen and colon. Expressed at very low levels in liver and thymus. Not expressed in peripheral blood leukocytes. Not or reduced expressed in lung, prostate, colon, pancreas and ovarian carcinomas.
<b>Function</b>	similarity:Contains 3 ARM repeats.,tissue specificity:Expressed at high levels ovary, heart, testis, prostate, brain, spleen and colon. Expressed at very low levels in liver and thymus. Not expressed in peripheral blood leukocytes. Not or reduced expressed in lung, prostate, colon, pancreas and ovarian carcinomas.,
<b>Background</b>	armadillo repeat containing, X-linked 1(ARMCX1) Homo sapiens This gene encodes a member of the ALEX family of proteins and may play a role in tumor

Nanjing BYabscience technology Co.,Ltd



suppression. The encoded protein contains a potential N-terminal transmembrane domain and two Armadillo (arm) repeats. Other proteins containing the arm repeat are involved in development, maintenance of tissue integrity, and tumorigenesis. This gene is closely localized with other family members, including ALEX2 and ALEX3, on the X chromosome. [provided by RefSeq, Jul 2008],

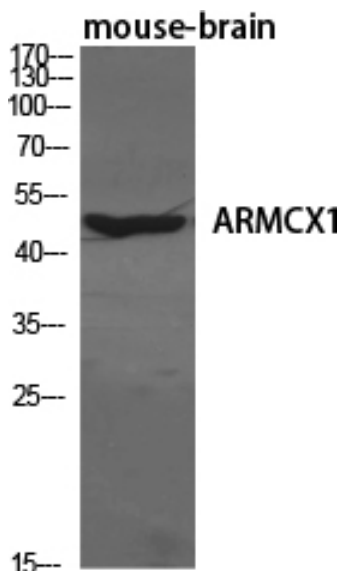
**matters needing attention**

Avoid repeated freezing and thawing!

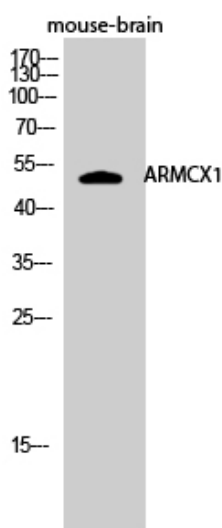
**Usage suggestions**

This product can be used in immunological reaction related experiments. For more information, please consult technical personnel.

**Products Images**

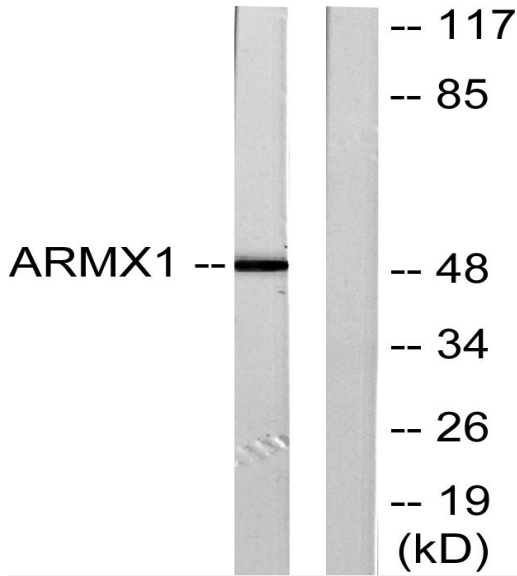


Western Blot analysis of various cells using ARM CX1 Polyclonal Antibody diluted at 1:1000

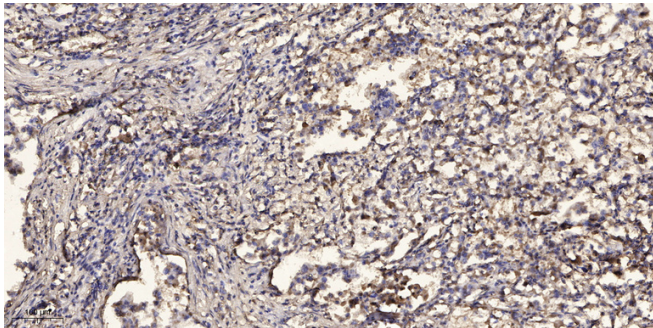


Western Blot analysis of mouse-brain cells using ARM CX1 Polyclonal Antibody diluted at 1:1000

Nanjing BYabscience technology Co.,Ltd



Western blot analysis of lysates from rat brain cells, using ARMX1 Antibody. The lane on the right is blocked with the synthesized peptide.



Immunohistochemical analysis of paraffin-embedded human Squamous cell carcinoma of lung. 1, Antibody was diluted at 1:200(4° overnight). 2, Tris-EDTA,pH9.0 was used for antigen retrieval. 3,Secondary antibody was diluted at 1:200(room temperature, 45min).