



APS Polyclonal Antibody

Catalog No	BYab-03707
Isotype	IgG
Reactivity	Human;Mouse;Rat
Applications	WB;ELISA
Gene Name	SH2B2
Protein Name	SH2B adapter protein 2
Immunogen	Synthesized peptide derived from the Internal region of human APS.
Specificity	APS Polyclonal Antibody detects endogenous levels of APS protein.
Formulation	Liquid in PBS containing 50% glycerol, 0.5% BSA and 0.02% sodium azide.
Source	Polyclonal, Rabbit,IgG
Purification	The antibody was affinity-purified from rabbit antiserum by affinity-chromatography using epitope-specific immunogen.
Dilution	Western Blot: 1/500 - 1/2000. ELISA: 1/20000. Not yet tested in other applications.
Concentration	1 mg/ml
Purity	≥90%
Storage Stability	-20°C/1 year
Synonyms	SH2B2; APS; SH2B adapter protein 2; Adapter protein with pleckstrin homology and Src homology 2 domains; SH2 and PH domain-containing adapter protein APS
Observed Band	67kD
Cell Pathway	Cytoplasm . Cell membrane . Cytoplasmic before PDGF stimulation. After PDGF stimulation, localized at the cell membrane and peripheral region.
Tissue Specificity	Expressed in spleen, prostate, testis, uterus, small intestine and skeletal muscle. Among hematopoietic cell lines, expressed exclusively in B-cells. Not expressed in most tumor cell lines.
Function	function:Adapter protein for several members of the tyrosine kinase receptor family. Involved in multiple signaling pathways. May be involved in coupling from immunoreceptor to Ras signaling. Acts as a negative regulator of cytokine signaling in collaboration with CBL. Binds to EPOR and suppresses EPO-induced STAT5 activation, possibly through a masking effect on STAT5 docking sites in EPOR. Suppresses PDGF-induced mitogenesis. May induce cytoskeletal reorganization via interaction with VAV3.,PTM:Tyrosine phosphorylated by JAK2, KIT and other kinases activated by B-cell receptor in response to stimulation with

Nanjing BYabscience technology Co.,Ltd



cytokines, IL3, IL5, PDGF, IGF1, IGF2, CSF2/GM-CSF and cross-linking of the B-cell receptor complex.,similarity:Belongs to the SH2B adapter family.,similarity:Contains 1 PH domain.,similarity:Contains 1 SH2 domain.,subcellular location:Cytoplasmic before PDGF stimulation. After PDG

Background

The protein encoded by this gene is expressed in B lymphocytes and contains pleckstrin homology and src homology 2 (SH2) domains. In Burkitt's lymphoma cell lines, it is tyrosine-phosphorylated in response to B cell receptor stimulation. Because it binds Shc independent of stimulation and Grb2 after stimulation, it appears to play a role in signal transduction from the receptor to the Shc/Grb2 pathway. [provided by RefSeq, Jun 2009],

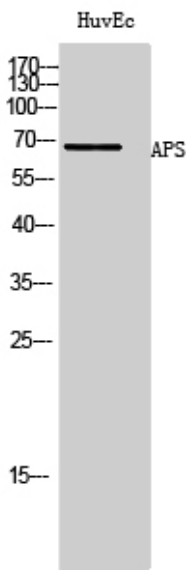
matters needing attention

Avoid repeated freezing and thawing!

Usage suggestions

This product can be used in immunological reaction related experiments. For more information, please consult technical personnel.

Products Images



Western Blot analysis of HuvEc cells using APS Polyclonal Antibody