



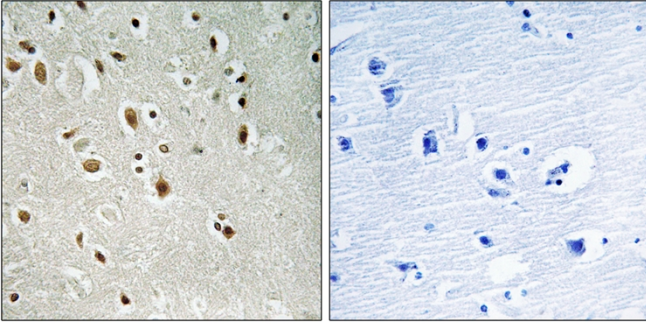
# ANKRD20 Polyclonal Antibody

<b>Catalog No</b>	BYab-03698
<b>Isotype</b>	IgG
<b>Reactivity</b>	Human;Rat;Mouse;
<b>Applications</b>	IHC;IF;ELISA
<b>Gene Name</b>	ANKRD20A3
<b>Protein Name</b>	Ankyrin repeat domain-containing protein 20A3
<b>Immunogen</b>	The antiserum was produced against synthesized peptide derived from human ANKRD20A3. AA range:551-600
<b>Specificity</b>	ANKRD20 Polyclonal Antibody detects endogenous levels of ANKRD20 protein.
<b>Formulation</b>	Liquid in PBS containing 50% glycerol, 0.5% BSA and 0.02% sodium azide.
<b>Source</b>	Polyclonal, Rabbit,IgG
<b>Purification</b>	The antibody was affinity-purified from rabbit antiserum by affinity-chromatography using epitope-specific immunogen.
<b>Dilution</b>	IHC: 1/100 - 1/300. ELISA: 1/10000.. IF 1:50-200
<b>Concentration</b>	1 mg/ml
<b>Purity</b>	≥90%
<b>Storage Stability</b>	-20°C/1 year
<b>Synonyms</b>	ANKRD20A3; Ankyrin repeat domain-containing protein 20A3
<b>Observed Band</b>	95kD
<b>Cell Pathway</b>	
<b>Tissue Specificity</b>	Testis,
<b>Function</b>	similarity:Contains 5 ANK repeats.,tissue specificity:Widely expressed; not found in kidney, nor in liver.,
<b>Background</b>	similarity:Contains 5 ANK repeats.,tissue specificity:Widely expressed; not found in kidney, nor in liver.,
<b>matters needing attention</b>	Avoid repeated freezing and thawing!
<b>Usage suggestions</b>	This product can be used in immunological reaction related experiments. For more information, please consult technical personnel.

Nanjing BYabscience technology Co.,Ltd



## Products Images



Immunohistochemistry analysis of paraffin-embedded human brain, using ANKRD20A3 Antibody. The picture on the right is blocked with the synthesized peptide.