



AKAP 2 Polyclonal Antibody

Catalog No	BYab-03691
Isotype	IgG
Reactivity	Human;Rat;Mouse;
Applications	WB;ELISA
Gene Name	AKAP2
Protein Name	A-kinase anchor protein 2
Immunogen	The antiserum was produced against synthesized peptide derived from human AKAP2. AA range:71-120
Specificity	AKAP 2 Polyclonal Antibody detects endogenous levels of AKAP 2 protein.
Formulation	Liquid in PBS containing 50% glycerol, 0.5% BSA and 0.02% sodium azide.
Source	Polyclonal, Rabbit,IgG
Purification	The antibody was affinity-purified from rabbit antiserum by affinity-chromatography using epitope-specific immunogen.
Dilution	Western Blot: 1/500 - 1/2000. ELISA: 1/20000. Not yet tested in other applications.
Concentration	1 mg/ml
Purity	≥90%
Storage Stability	-20°C/1 year
Synonyms	AKAP2; KIAA0920; PRKA2; A-kinase anchor protein 2; AKAP-2; AKAP-KL; Protein kinase A-anchoring protein 2; PRKA2
Observed Band	96kD
Cell Pathway	
Tissue Specificity	Brain,Epithelium,Hippocampus,Liver,Muscle,Small intestine,Trachea,
Function	caution:It is uncertain whether Met-1 or Met-3 is the initiator.,function:Binds to regulatory subunit (RII) of protein kinase A. May be involved in establishing polarity in signaling systems or in integrating PKA-RII isoforms with downstream effectors to capture, amplify and focus diffuse, trans-cellular signals carried by cAMP.,miscellaneous:Can be differentially expressed as a natural AKAP2-PALM2 chimeric protein.,similarity:Belongs to the palemmin family.,tissue specificity:Expressed in infantile heart and muscle, and fibroblasts.,
Background	The protein encoded by this gene binds to the regulatory subunit of protein kinase A and is found associated with the actin cytoskeleton. The encoded protein

Nanjing BYabscience technology Co.,Ltd



mediates signals carried by cAMP and may be involved in creating polarity in certain signaling processes. Three transcript variants encoding different isoforms have been found for this gene. [provided by RefSeq, Mar 2011],

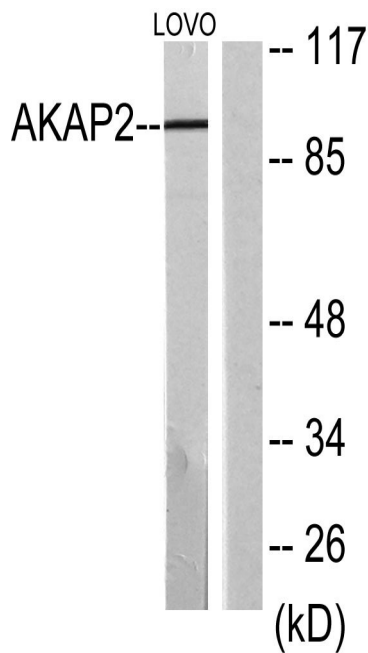
matters needing attention

Avoid repeated freezing and thawing!

Usage suggestions

This product can be used in immunological reaction related experiments. For more information, please consult technical personnel.

Products Images



Western blot analysis of lysates from LOVO cells, using AKAP2 Antibody. The lane on the right is blocked with the synthesized peptide.