



AHA-1 Polyclonal Antibody

Catalog No	BYab-03683
Isotype	IgG
Reactivity	Human;Rat;Mouse;
Applications	WB;IHC;IF;ELISA
Gene Name	AHSA1
Protein Name	Activator of 90 kDa heat shock protein ATPase homolog 1
Immunogen	The antiserum was produced against synthesized peptide derived from human AHSA1. AA range:161-210
Specificity	AHA-1 Polyclonal Antibody detects endogenous levels of AHA-1 protein.
Formulation	Liquid in PBS containing 50% glycerol, 0.5% BSA and 0.02% sodium azide.
Source	Polyclonal, Rabbit,IgG
Purification	The antibody was affinity-purified from rabbit antiserum by affinity-chromatography using epitope-specific immunogen.
Dilution	WB: 1/500 - 1/2000. IHC: 1/100 - 1/300;ELISA 1:5000-20000.. IF 1:50-200
Concentration	1 mg/ml
Purity	≥90%
Storage Stability	-20°C/1 year
Synonyms	AHSA1; C14orf3; HSPC322; Activator of 90 kDa heat shock protein ATPase homolog 1; AHA1; p38
Observed Band	38kD
Cell Pathway	Cytoplasm, cytosol . Endoplasmic reticulum . May transiently interact with the endoplasmic reticulum.
Tissue Specificity	Expressed in numerous tissues, including brain, heart, skeletal muscle and kidney and, at lower levels, liver and placenta.
Function	function:Cochaperone that stimulates HSP90 ATPase activity (By similarity). May affect a step in the endoplasmic reticulum to Golgi trafficking.,induction:By heat shock and treatment with the HSP90 inhibitor 17-demethoxygeldanamycin (17AAG).,similarity:Belongs to the AHA1 family.,subcellular location:May transiently interact with the endoplasmic reticulum.,subunit:Interacts with HSPCA/HSP90 and with the cytoplasmic tail of the vesicular stomatitis virus glycoprotein (VSV G). Interacts with GCH1.,tissue specificity:Expressed in numerous tissues, including brain, heart, skeletal muscle and kidney and, at lower levels, liver and placenta.,

Nanjing BYabscience technology Co.,Ltd



Background

function:Cochaperone that stimulates HSP90 ATPase activity (By similarity). May affect a step in the endoplasmic reticulum to Golgi trafficking.,induction:By heat shock and treatment with the HSP90 inhibitor 17-demethoxygeldanamycin (17AAG).,similarity:Belongs to the AHA1 family.,subcellular location:May transiently interact with the endoplasmic reticulum.,subunit:Interacts with HSPCA/HSP90 and with the cytoplasmic tail of the vesicular stomatitis virus glycoprotein (VSV G). Interacts with GCH1.,tissue specificity:Expressed in numerous tissues, including brain, heart, skeletal muscle and kidney and, at lower levels, liver and placenta.,

matters needing attention

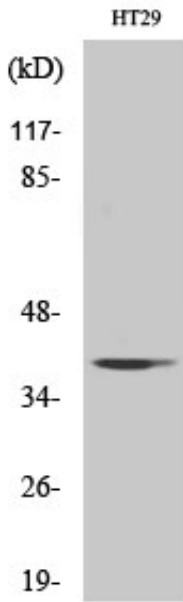
Avoid repeated freezing and thawing!

Usage suggestions

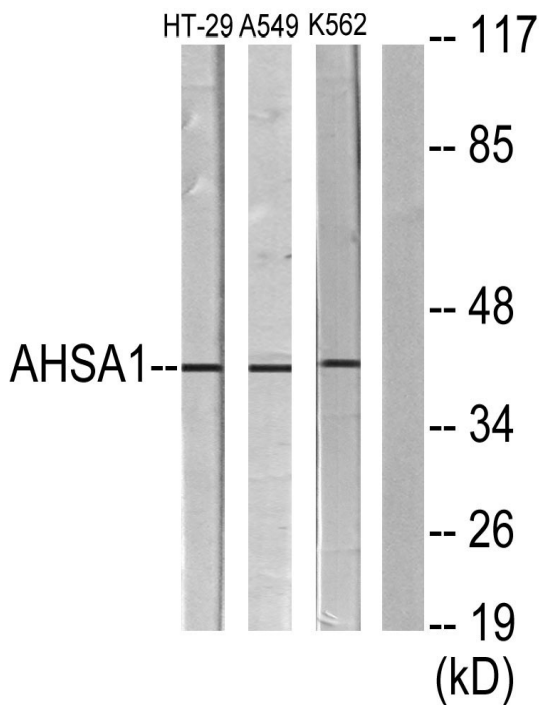
This product can be used in immunological reaction related experiments. For more information, please consult technical personnel.



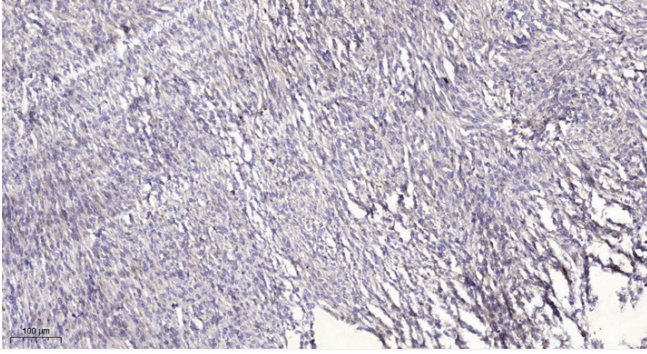
Products Images



Western Blot analysis of various cells using AHA-1 Polyclonal Antibody diluted at 1:1000



Western blot analysis of lysates from HT-29, A549, and K562 cells, using AHSA1 Antibody. The lane on the right is blocked with the synthesized peptide.



Immunohistochemical analysis of paraffin-embedded human Colon cancer. 1, Antibody was diluted at 1:200(4° overnight). 2, Tris-EDTA,pH9.0 was used for antigen retrieval. 3,Secondary antibody was diluted at 1:200(room temperature, 45min).