



Abi-1 Polyclonal Antibody

Catalog No	BYab-03678
Isotype	IgG
Reactivity	Human;Mouse;Rat
Applications	WB;ELISA
Gene Name	ABI1
Protein Name	Abl interactor 1
Immunogen	The antiserum was produced against synthesized peptide derived from human Abi-1. AA range:152-201
Specificity	Abi-1 Polyclonal Antibody detects endogenous levels of Abi-1 protein.
Formulation	Liquid in PBS containing 50% glycerol, 0.5% BSA and 0.02% sodium azide.
Source	Polyclonal, Rabbit,IgG
Purification	The antibody was affinity-purified from rabbit antiserum by affinity-chromatography using epitope-specific immunogen.
Dilution	Western Blot: 1/500 - 1/2000. ELISA: 1/40000. Not yet tested in other applications.
Concentration	1 mg/ml
Purity	≥90%
Storage Stability	-20°C/1 year
Synonyms	ABI1; SSH3BP1; Abl interactor 1; Abelson interactor 1; Abi-1; Abl-binding protein 4; AbIBP4; Eps8 SH3 domain-binding protein; Eps8-binding protein; Nap1-binding protein; Nap1BP; Spectrin SH3 domain-binding protein 1; e3B1
Observed Band	55kD
Cell Pathway	Cytoplasm . Nucleus . Cell projection, lamellipodium . Cell projection, filopodium . Cell projection, growth cone . Cell junction, synapse, postsynaptic density . Cytoplasm, cytoskeleton . Localized to protruding lamellipodia and filopodia tips. Also localized to neuronal growth cones and synaptosomes. May shuttle from the postsynaptic densities to the nucleus (By similarity). .
Tissue Specificity	Widely expressed, with highest expression in brain.
Function	alternative products:Additional isoforms seem to exist,disease:A chromosomal aberration involving ABI1 is a cause of acute leukemias. Translocation t(10;11)(p11.2;q23) with MLL. ABI1 isoform 2 was found to be present in acute leukemia MLL-ABI1 fusion transcript.,domain:The t-SNARE coiled-coil homology domain is necessary and sufficient for interaction with STX1A.,function:May act in

Nanjing BYabscience technology Co.,Ltd



negative regulation of cell growth and transformation by interacting with nonreceptor tyrosine kinases ABL1 and/or ABL2. May play a role in regulation of EGF-induced Erk pathway activation. Involved in cytoskeletal reorganization and EGFR signaling. Together with EPS8 participates in transduction of signals from Ras to Rac. In vitro, a trimeric complex of ABI1, EPS8 and SOS1 exhibits Rac specific guanine nucleotide exchange factor (GEF) activity and ABI1 seems to act as an adapter in the complex. Regulates AB

Background

This gene encodes a member of the Abelson-interactor family of adaptor proteins. These proteins facilitate signal transduction as components of several multiprotein complexes, and regulate actin polymerization and cytoskeletal remodeling through interactions with Abelson tyrosine kinases. The encoded protein plays a role in macropinocytosis as a component of the WAVE2 complex, and also forms a complex with EPS8 and SOS1 that mediates signal transduction from Ras to Rac. This gene may play a role in the progression of several malignancies including melanoma, colon cancer and breast cancer, and a t(10;11) chromosomal translocation involving this gene and the MLL gene has been associated with acute myeloid leukemia. Alternatively spliced transcript variants encoding multiple isoforms have been observed for this gene, and a pseudogene of this gene is located on the long arm of chromosome 14. [provided by RefSeq

matters needing attention

Avoid repeated freezing and thawing!

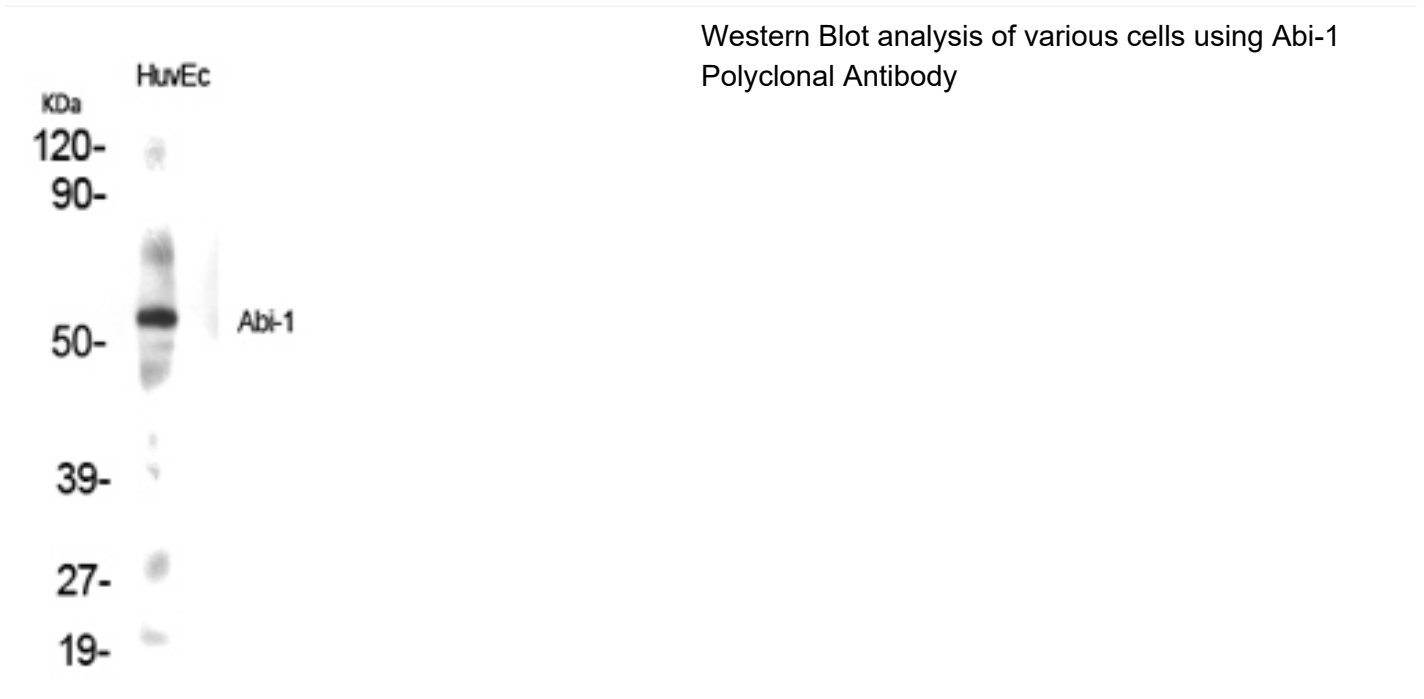
Usage suggestions

This product can be used in immunological reaction related experiments. For more information, please consult technical personnel.

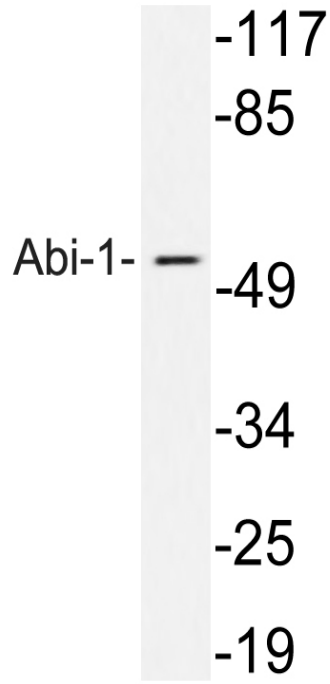
Nanjing BYabscience technology Co.,Ltd



Products Images



Nanjing BYabscience technology Co.,Ltd



Western blot analysis of lysates from 293 cells treated with TNF, using Abi-1 antibody.