



A Cyclase VII Polyclonal Antibody

| | |
|---------------------------|---|
| Catalog No | BYab-03676 |
| Isotype | IgG |
| Reactivity | Human;Mouse |
| Applications | IHC;IF;ELISA |
| Gene Name | ADCY7 |
| Protein Name | Adenylate cyclase type 7 |
| Immunogen | The antiserum was produced against synthesized peptide derived from human ADCY7. AA range:191-240 |
| Specificity | A Cyclase VII Polyclonal Antibody detects endogenous levels of A Cyclase VII protein. |
| Formulation | Liquid in PBS containing 50% glycerol, 0.5% BSA and 0.02% sodium azide. |
| Source | Polyclonal, Rabbit,IgG |
| Purification | The antibody was affinity-purified from rabbit antiserum by affinity-chromatography using epitope-specific immunogen. |
| Dilution | Immunohistochemistry: 1/100 - 1/300. Immunofluorescence: 1/200 - 1/1000. ELISA: 1/5000. Not yet tested in other applications. |
| Concentration | 1 mg/ml |
| Purity | ≥90% |
| Storage Stability | -20°C/1 year |
| Synonyms | ADCY7; KIAA0037; Adenylate cyclase type 7; ATP pyrophosphate-lyase 7; Adenylate cyclase type VII; Adenylyl cyclase 7 |
| Observed Band | |
| Cell Pathway | Membrane; Multi-pass membrane protein. |
| Tissue Specificity | Blood,Bone marrow, |
| Function | catalytic activity:ATP = 3',5'-cyclic AMP + diphosphate.,cofactor:Binds 2 magnesium ions per subunit.,function:This is a membrane-bound, calcium-inhibitable adenylyl cyclase.,similarity:Belongs to the adenylyl cyclase class-4/guanylyl cyclase family.,similarity:Contains 2 guanylate cyclase domains., |
| Background | This gene encodes a membrane-bound adenylate cyclase that catalyses the formation of cyclic AMP from ATP and is inhibitable by calcium. The product of this gene is a member of the adenylyl cyclase class-4/guanylyl cyclase enzyme family that is characterized by the presence of twelve membrane-spanning domains in its sequences. Several transcript variants have been observed for this |

Nanjing BYabscience technology Co.,Ltd



gene, but the full-length natures of only two have been determined so far. [provided by RefSeq, Oct 2013],

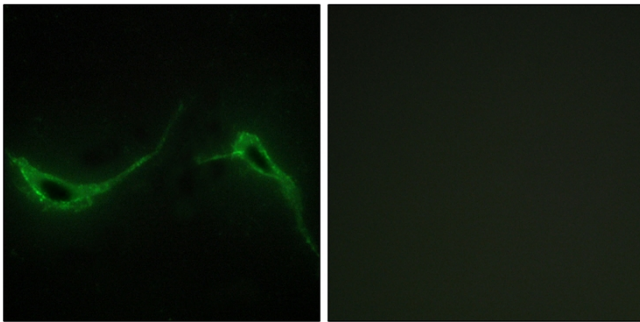
matters needing attention

Avoid repeated freezing and thawing!

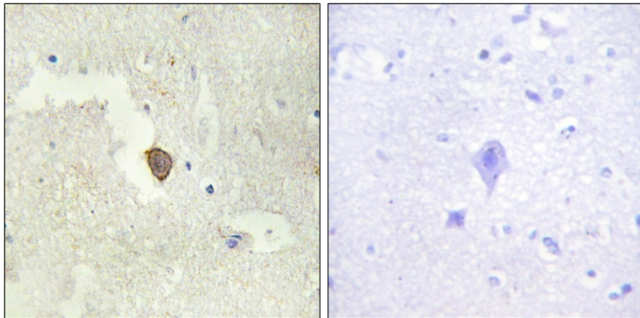
Usage suggestions

This product can be used in immunological reaction related experiments. For more information, please consult technical personnel.

Products Images



Immunofluorescence analysis of NIH/3T3 cells, using ADCY7 Antibody. The picture on the right is blocked with the synthesized peptide.



Immunohistochemistry analysis of paraffin-embedded human brain tissue, using ADCY7 Antibody. The picture on the right is blocked with the synthesized peptide.