



# 14-3-3 $\sigma$ (Phospho Ser186) rabbit pAb

<b>Catalog No</b>	BYab-03651
<b>Isotype</b>	IgG
<b>Reactivity</b>	Human;Mouse
<b>Applications</b>	WB; ELISA
<b>Gene Name</b>	SFN HME1
<b>Protein Name</b>	14-3-3 $\sigma$ (Phospho Ser186)
<b>Immunogen</b>	Synthesized peptide derived from human 14-3-3 $\sigma$ (Phospho Ser186)
<b>Specificity</b>	This antibody detects endogenous levels of Human,Mouse 14-3-3 $\sigma$ (Phospho Ser186)
<b>Formulation</b>	Liquid in PBS containing 50% glycerol, 0.5% BSA and 0.02% sodium azide.
<b>Source</b>	Polyclonal, Rabbit,IgG
<b>Purification</b>	The antibody was affinity-purified from rabbit serum by affinity-chromatography using specific immunogen.
<b>Dilution</b>	WB 1:1000-2000 ELISA 1:5000-20000
<b>Concentration</b>	1 mg/ml
<b>Purity</b>	$\geq 90\%$
<b>Storage Stability</b>	-20°C/1 year
<b>Synonyms</b>	14-3-3 protein sigma (Epithelial cell marker protein 1;Stratifin)
<b>Observed Band</b>	30kD
<b>Cell Pathway</b>	Cytoplasm. Nucleus . Secreted. May be secreted by a non-classical secretory pathway.
<b>Tissue Specificity</b>	Present mainly in tissues enriched in stratified squamous keratinizing epithelium.
<b>Function</b>	function:Adapter protein implicated in the regulation of a large spectrum of both general and specialized signaling pathway. Binds to a large number of partners, usually by recognition of a phosphoserine or phosphothreonine motif. Binding generally results in the modulation of the activity of the binding partner. When bound to KRT17, regulates protein synthesis and epithelial cell growth by stimulating Akt/mTOR pathway.,function:p53-regulated inhibitor of G2/M progression.,similarity:Belongs to the 14-3-3 family.,subcellular location:May be secreted by a non-classical secretory pathway.,subunit:Homodimer. Interacts with KRT17 (By similarity). Found in a complex with XPO7, EIF4A1, ARHGAP1, VPS26A, VPS29, VPS35 and SFN.,tissue specificity:Present mainly in tissues enriched in stratified squamous keratinising epithelium.,

Nanjing BYabscience technology Co.,Ltd



### Background

function:Adapter protein implicated in the regulation of a large spectrum of both general and specialized signaling pathway. Binds to a large number of partners, usually by recognition of a phosphoserine or phosphothreonine motif. Binding generally results in the modulation of the activity of the binding partner. When bound to KRT17, regulates protein synthesis and epithelial cell growth by stimulating Akt/mTOR pathway.,function:p53-regulated inhibitor of G2/M progression.,similarity:Belongs to the 14-3-3 family.,subcellular location:May be secreted by a non-classical secretory pathway.,subunit:Homodimer. Interacts with KRT17 (By similarity). Found in a complex with XPO7, EIF4A1, ARHGAP1, VPS26A, VPS29, VPS35 and SFN.,tissue specificity:Present mainly in tissues enriched in stratified squamous keratinising epithelium.,

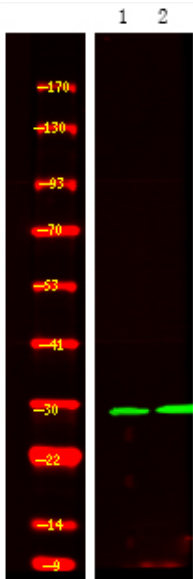
### matters needing attention

Avoid repeated freezing and thawing!

### Usage suggestions

This product can be used in immunological reaction related experiments. For more information, please consult technical personnel.

## Products Images



Western Blot analysis of 1 A431 cell 2 LPS 100ng/mL 30min treated ,using primary antibody at 1:1000 dilution. Secondary antibody(catalog#:RS23920) was diluted at 1:10000