



Rictor (phospho-Thr1135) rabbit pAb

Catalog No	BYab-03639
Isotype	IgG
Reactivity	Human;Mouse
Applications	WB;IHC
Gene Name	RICTOR KIAA1999
Protein Name	Rictor (Thr1135)
Immunogen	Synthesized phospho peptide around human Rictor (Thr1135)
Specificity	This antibody detects endogenous levels of Human Mouse Rictor (phospho-Thr1135)
Formulation	Liquid in PBS containing 50% glycerol, 0.5% BSA and 0.02% sodium azide.
Source	Polyclonal, Rabbit,IgG
Purification	The antibody was affinity-purified from rabbit serum by affinity-chromatography using specific immunogen.
Dilution	WB 1:500-2000;IHC-p 1:50-300
Concentration	1 mg/ml
Purity	≥90%
Storage Stability	-20°C/1 year
Synonyms	Rapamycin-insensitive companion of mTOR (AVO3 homolog) (hAVO3)
Observed Band	190kD
Cell Pathway	cytosol,TORC2 complex,
Tissue Specificity	Amygdala,Brain,Epithelium,Lymph,
Function	function:Plays an essential role in embryonic growth and development (By similarity). Part of the TORC2 complex which plays a critical role in AKT1 'Ser-473' phosphorylation, and may modulate the phosphorylation of PKCA and regulate actin cytoskeleton organization.,similarity:Belongs to the pianissimo family.,subunit:Forms part of the target of rapamycin 2 complex (TORC2) comprised of FRAP1, LST8, PROTOR1, RICTOR and MAPKAP1. TORC2 does not bind to and is not sensitive to FKBP12-rapamycin. Binds directly to FRAP1 and PROTOR1 within the TORC2 complex. May interact with PROTOR2.,
Background	RICTOR and MTOR (FRAP1; MIM 601231) are components of a protein complex that integrates nutrient- and growth factor-derived signals to regulate cell growth (Sarbasov et al., 2004 [PubMed 15268862]).[supplied by OMIM, Mar

Nanjing BYabscience technology Co.,Ltd



2008],

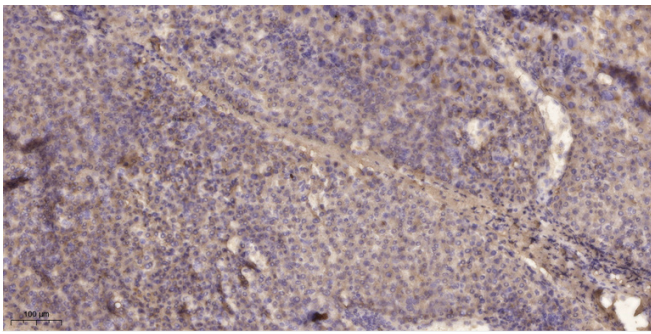
matters needing attention

Avoid repeated freezing and thawing!

Usage suggestions

This product can be used in immunological reaction related experiments. For more information, please consult technical personnel.

Products Images



Immunohistochemical analysis of paraffin-embedded human liver cancer. 1, Antibody was diluted at 1:200(4° overnight). 2, Tris-EDTA,pH9.0 was used for antigen retrieval. 3,Secondary antibody was diluted at 1:200(room temperature, 45min).