



14-3-3 ζ/δ (phospho Thr232) Polyclonal Antibody

Catalog No	BYab-03571
Isotype	IgG
Reactivity	Human;Mouse;Rat
Applications	WB;IHC;IF;ELISA
Gene Name	YWHAZ
Protein Name	14-3-3 protein zeta/delta
Immunogen	The antiserum was produced against synthesized peptide derived from human 14-3-3 zeta/delta around the phosphorylation site of Thr232. AA range:196-245
Specificity	Phospho-14-3-3 ζ/δ (T232) Polyclonal Antibody detects endogenous levels of 14-3-3 ζ/δ protein only when phosphorylated at T232.
Formulation	Liquid in PBS containing 50% glycerol, 0.5% BSA and 0.02% sodium azide.
Source	Polyclonal, Rabbit,IgG
Purification	The antibody was affinity-purified from rabbit antiserum by affinity-chromatography using epitope-specific immunogen.
Dilution	WB: 1/500 - 1/2000. IHC: 1/100 - 1/300. ELISA: 1/20000.. IF 1:50-200
Concentration	1 mg/ml
Purity	≥90%
Storage Stability	-20°C/1 year
Synonyms	YWHAZ; 14-3-3 protein zeta/delta; Protein kinase C inhibitor protein 1; KCIP-1
Observed Band	28kD
Cell Pathway	Cytoplasm . Melanosome . Located to stage I to stage IV melanosomes.
Tissue Specificity	B-cell lymphoma,Bone marrow
Function	caution:Was originally (PubMed:1577711) thought to have phospholipase A2 activity.,function:Adapter protein implicated in the regulation of a large spectrum of both general and specialized signaling pathway. Binds to a large number of partners, usually by recognition of a phosphoserine or phosphothreonine motif. Binding generally results in the modulation of the activity of the binding partner.,PTM:The delta, brain-specific form differs from the zeta form in being phosphorylated (By similarity). Phosphorylation on Ser-184 by MAPK8; promotes dissociation of BAX and translocation of BAX to mitochondria. Phosphorylation on Ser-58 by PKA; disrupts homodimerization and heterodimerization with YHAE and TP53. This phosphorylation appears to be activated by sphingosine. Phosphorylation on Thr-232; inhibits binding of RAF1.,similarity:Belongs to the

Nanjing BYabscience technology Co.,Ltd



14-3-3 family.,subcellular location:Located to

Background

This gene product belongs to the 14-3-3 family of proteins which mediate signal transduction by binding to phosphoserine-containing proteins. This highly conserved protein family is found in both plants and mammals, and this protein is 99% identical to the mouse, rat and sheep orthologs. The encoded protein interacts with IRS1 protein, suggesting a role in regulating insulin sensitivity. Several transcript variants that differ in the 5' UTR but that encode the same protein have been identified for this gene. [provided by RefSeq, Oct 2008],

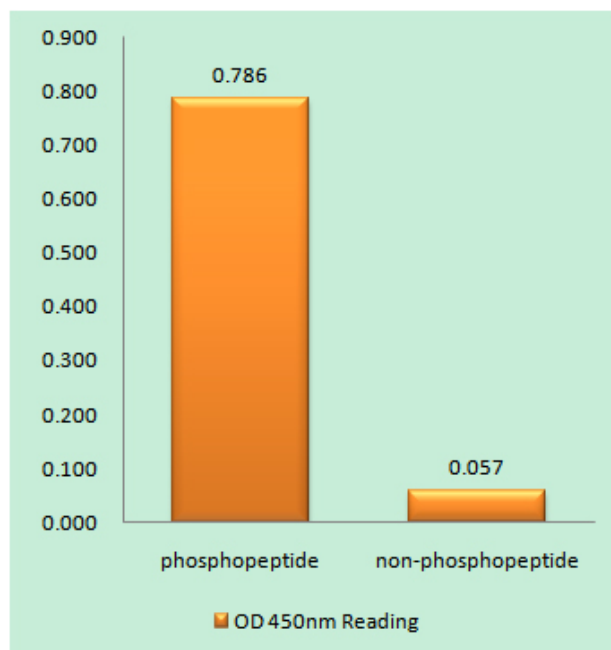
matters needing attention

Avoid repeated freezing and thawing!

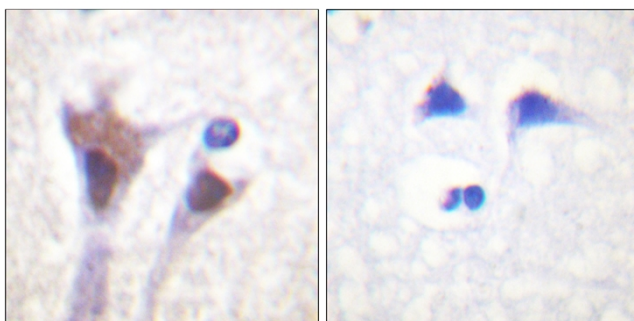
Usage suggestions

This product can be used in immunological reaction related experiments. For more information, please consult technical personnel.

Products Images

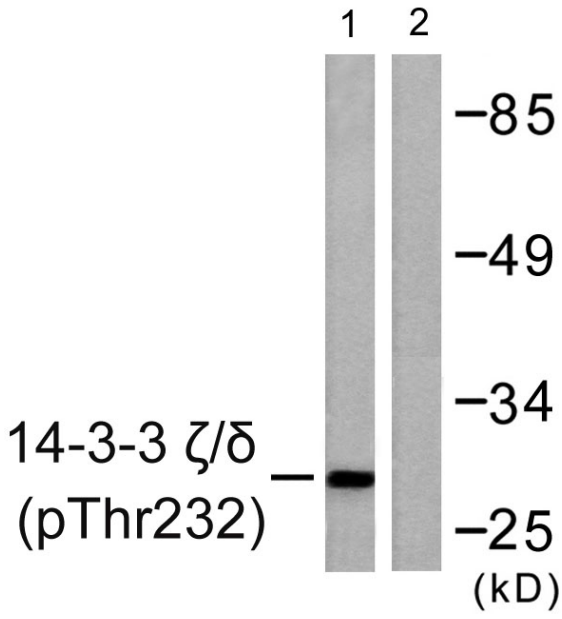


Enzyme-Linked Immunosorbent Assay (Phospho-ELISA) for Immunogen Phosphopeptide (Phospho-left) and Non-Phosphopeptide (Phospho-right), using 14-3-3 zeta/delta (Phospho-Thr232) Antibody



Immunohistochemistry analysis of paraffin-embedded human brain, using 14-3-3 zeta/delta (Phospho-Thr232) Antibody. The picture on the right is blocked with the phosphopeptide.

Nanjing BYabscience technology Co.,Ltd



Western blot analysis of lysates from Jurkat cells treated with UV 15', using 14-3-3 zeta/delta (Phospho-Thr232) Antibody. The lane on the right is blocked with the phospho peptide.