



HSP90 β (phospho Ser226) Polyclonal Antibody

| | |
|---------------------------|---|
| Catalog No | BYab-03555 |
| Isotype | IgG |
| Reactivity | Human;Mouse;Rat |
| Applications | WB;IHC;IF;ELISA |
| Gene Name | HSP90AB1 |
| Protein Name | Heat shock protein HSP 90-beta |
| Immunogen | The antiserum was produced against synthesized peptide derived from human HSP90B around the phosphorylation site of Ser226. AA range:201-250 |
| Specificity | Phospho-HSP90 β (S226) Polyclonal Antibody detects endogenous levels of HSP90 β protein only when phosphorylated at S226. |
| Formulation | Liquid in PBS containing 50% glycerol, 0.5% BSA and 0.02% sodium azide. |
| Source | Polyclonal, Rabbit,IgG |
| Purification | The antibody was affinity-purified from rabbit antiserum by affinity-chromatography using epitope-specific immunogen. |
| Dilution | Western Blot: 1/500 - 1/2000. Immunohistochemistry: 1/100 - 1/300. Immunofluorescence: 1/200 - 1/1000. ELISA: 1/10000. Not yet tested in other applications. |
| Concentration | 1 mg/ml |
| Purity | $\geq 90\%$ |
| Storage Stability | -20°C/1 year |
| Synonyms | HSP90AB1; HSP90B; HSPC2; HSPCB; Heat shock protein HSP 90-beta; HSP 90; Heat shock 84 kDa; HSP 84; HSP84 |
| Observed Band | 83kD |
| Cell Pathway | Cytoplasm . Melanosome . Nucleus . Secreted . Cell membrane . Dynein axonemal particle . Cell surface . Identified by mass spectrometry in melanosome fractions from stage I to stage IV (PubMed:17081065). Translocates with BIRC2 from the nucleus to the cytoplasm during differentiation (PubMed:18239673). Secreted when associated with TGFB1 processed form (LAP) (PubMed:20599762). . |
| Tissue Specificity | Amygdala,Brain cortex,Colon,Colon carcinoma,Embryon |
| Function | function:Molecular chaperone. Has ATPase activity.,PTM:Phosphorylated upon DNA damage, probably by ATM or ATR.,similarity:Belongs to the heat shock protein 90 family.,subcellular location:Identified by mass spectrometry in melanosome fractions from stage I to stage IV.,subunit:Homodimer. Interacts with TP53/p53 (By similarity). Interacts with UNC45A. Binding to UNC45A involves 2 |

Nanjing BYabscience technology Co.,Ltd



UNC45A monomers per HSP90AB1 dimer.,

Background

This gene encodes a member of the heat shock protein 90 family; these proteins are involved in signal transduction, protein folding and degradation and morphological evolution. This gene encodes the constitutive form of the cytosolic 90 kDa heat-shock protein and is thought to play a role in gastric apoptosis and inflammation. Alternative splicing results in multiple transcript variants. Pseudogenes have been identified on multiple chromosomes. [provided by RefSeq, Dec 2012],

matters needing attention

Avoid repeated freezing and thawing!

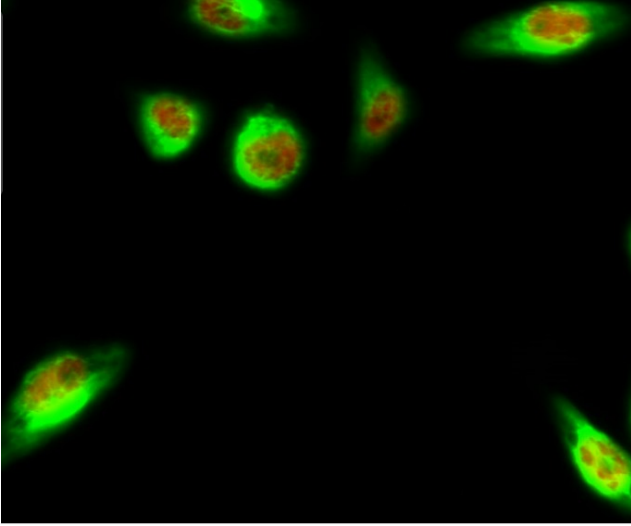
Usage suggestions

This product can be used in immunological reaction related experiments. For more information, please consult technical personnel.

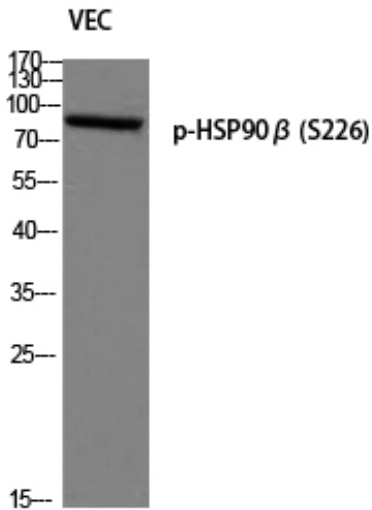
Nanjing BYabscience technology Co.,Ltd



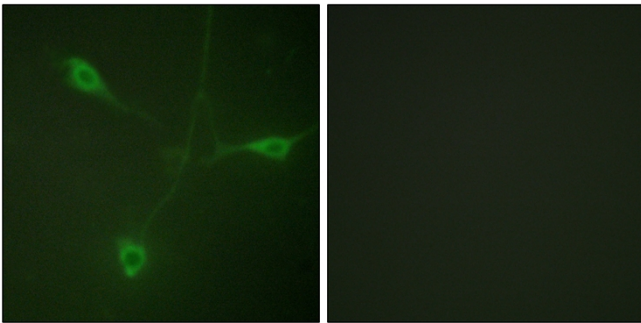
Products Images



Immunofluorescence analysis of HeLa cell. 1, HSP90 β (phospho Ser226) Polyclonal Antibody (red) was diluted at 1:200 (4 $^{\circ}$ overnight). CK7 Monoclonal Antibody (12D7) (green) was diluted at 1:200 (4 $^{\circ}$ overnight). 2, Goat Anti Rabbit Alexa Fluor 594 Catalog: RS3611 was diluted at 1:1000 (room temperature, 50min). Goat Anti Mouse Alexa Fluor 488 Catalog: RS3208 was diluted at 1:1000 (room temperature, 50min).

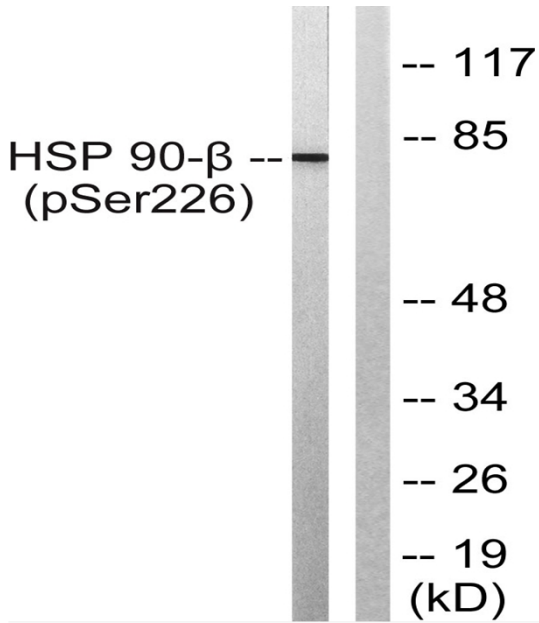


Western blot analysis of VEC using p-HSP90 β (S226) antibody.

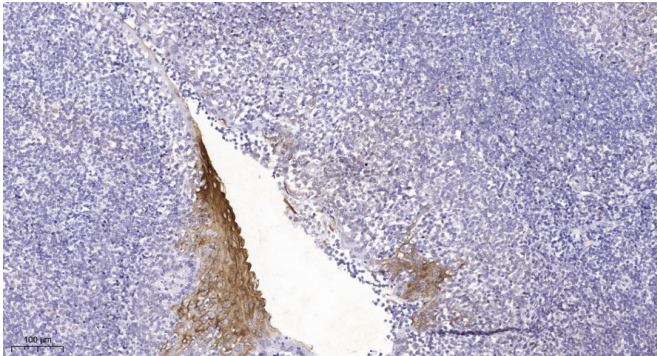


Immunofluorescence analysis of NIH/3T3 cells, using HSP90B (Phospho-Ser226) Antibody. The picture on the right is blocked with the phospho peptide.

Nanjing BYabscience technology Co., Ltd



Western blot analysis of lysates from A549 cells treated with serum 20% 15', using HSP90B (Phospho-Ser226) Antibody. The lane on the right is blocked with the phospho peptide.



Immunohistochemical analysis of paraffin-embedded human tonsil. 1, Tris-EDTA, pH9.0 was used for antigen retrieval. 2 Antibody was diluted at 1:200(4° overnight). 3, Secondary antibody was diluted at 1:200(room temperature, 45min).