



Eps15 (phospho Tyr849) Polyclonal Antibody

Catalog No	BYab-03542
Isotype	IgG
Reactivity	Human;Mouse;Rat
Applications	WB;ELISA
Gene Name	EPS15
Protein Name	Epidermal growth factor receptor substrate 15
Immunogen	Synthesized phospho-peptide around the phosphorylation site of human Eps15 (phospho Tyr849)
Specificity	Phospho-Eps15 (Y849) Polyclonal Antibody detects endogenous levels of Eps15 protein only when phosphorylated at Y849.
Formulation	Liquid in PBS containing 50% glycerol, 0.5% BSA and 0.02% sodium azide.
Source	Polyclonal, Rabbit,IgG
Purification	The antibody was affinity-purified from rabbit antiserum by affinity-chromatography using epitope-specific immunogen.
Dilution	Western Blot: 1/500 - 1/2000. ELISA: 1/10000. Not yet tested in other applications.
Concentration	1 mg/ml
Purity	≥90%
Storage Stability	-20°C/1 year
Synonyms	EPS15; AF1P; Epidermal growth factor receptor substrate 15; Protein Eps15; Protein AF-1p
Observed Band	100kD
Cell Pathway	Cytoplasm. Cell membrane; Peripheral membrane protein; Cytoplasmic side. Membrane, clathrin-coated pit. Recruited to the plasma membrane upon EGFR activation and localizes to coated pits. Colocalizes with UBQLN1 in ubiquitin-rich cytoplasmic aggregates that are not endocytic compartments and in cytoplasmic juxtannuclear structures called aggresomes. .; [Isoform 2]: Early endosome membrane ; Peripheral membrane protein ; Cytoplasmic side . Colocalizes with HGS on bilayered clathrin coats on endosomes.
Tissue Specificity	Ubiquitously expressed.
Function	disease:A chromosomal aberration involving EPS15 is found in acute leukemias. Translocation t(1;11)(p32;q23) with MLL/HRX. The result is a rogue activator protein.,domain:The EH domain interacts with Asn-Pro-Phe (NPF) motifs of target proteins.,function:Involved in cell growth regulation. May be involved in the regulation of mitogenic signals and control of cell proliferation. Involved in the

Nanjing BYabscience technology Co.,Ltd



internalization of ligand-inducible receptors of the receptor tyrosine kinase (RTK) type, in particular EGFR. Plays a role in the assembly of clathrin-coated pits.,PTM:Phosphorylation on Tyr-849 is involved in the internalization of EGFR. Not required for membrane translocation after EGF treatment or for targeting to coated pits, but essential for a subsequent step in EGFR endocytosis (By similarity). Phosphorylated on serine upon DNA damage, probably by ATM or ATR.,similarity:Contains 2 EF-hand dom

Background

This gene encodes a protein that is part of the EGFR pathway. The protein is present at clatherin-coated pits and is involved in receptor-mediated endocytosis of EGF. Notably, this gene is rearranged with the HRX/ALL/MLL gene in acute myelogenous leukemias. Alternative splicing results in multiple transcript variants encoding distinct isoforms. [provided by RefSeq, May 2009],

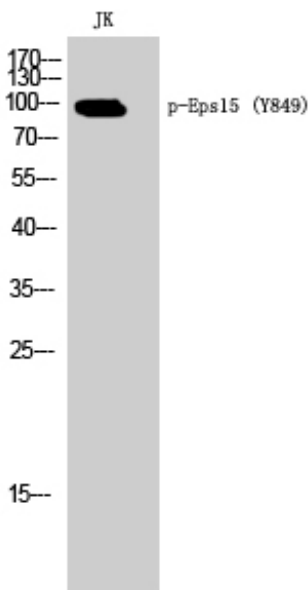
matters needing attention

Avoid repeated freezing and thawing!

Usage suggestions

This product can be used in immunological reaction related experiments. For more information, please consult technical personnel.

Products Images



Western Blot analysis of JK cells using Phospho-Eps15 (Y849) Polyclonal Antibody