



4.1R (phospho Tyr660) Polyclonal Antibody

Catalog No	BYab-03541
Isotype	IgG
Reactivity	Human;Mouse
Applications	WB;IHC;IF;ELISA
Gene Name	EPB41
Protein Name	Protein 4.1
Immunogen	The antiserum was produced against synthesized peptide derived from human EPB41 around the phosphorylation site of Tyr660/418. AA range:626-675
Specificity	Phospho-4.1R (Y660) Polyclonal Antibody detects endogenous levels of 4.1R protein only when phosphorylated at Y660.
Formulation	Liquid in PBS containing 50% glycerol, 0.5% BSA and 0.02% sodium azide.
Source	Polyclonal, Rabbit,IgG
Purification	The antibody was affinity-purified from rabbit antiserum by affinity-chromatography using epitope-specific immunogen.
Dilution	WB: 1/500 - 1/2000. IHC: 1/100 - 1/300. ELISA: 1/5000.. IF 1:50-200
Concentration	1 mg/ml
Purity	≥90%
Storage Stability	-20°C/1 year
Synonyms	EPB41; E41P; Protein 4.1; P4.1; 4.1R; Band 4.1; EPB4.1
Observed Band	60kD
Cell Pathway	Cytoplasm, cytoskeleton . Cytoplasm, cell cortex . Nucleus .
Tissue Specificity	Brain,PCR rescued clones,Reticulocyte,Spleen,
Function	disease:Defects in EPB41 are a cause of hereditary pyropoikilocytosis (HPP) [MIM:266140]. HPP is an autosomal recessive hematologic disorder characterized by hemolytic anemia, microspherocytosis, poikilocytosis, and an unusual thermal sensitivity of red cells.,disease:Defects in EPB41 are the cause of elliptocytosis type 1 (EL1) [MIM:611804]. EL1 is a Rhesus-linked form of hereditary elliptocytosis, a genetically heterogeneous, autosomal dominant, hematologic disorder. It is characterized by variable hemolytic anemia and elliptical or oval red cell shape.,function:Protein 4.1 is a major structural element of the erythrocyte membrane skeleton. It plays a key role in regulating membrane physical properties of mechanical stability and deformability by stabilizing spectrin-actin interaction. Recruits DLG1 to membranes.,PTM:O-glycosylated;

Nanjing BYabscience technology Co.,Ltd



contains N-acetylglucosamine side chains in the C-ter

Background

The protein encoded by this gene, together with spectrin and actin, constitute the red cell membrane cytoskeletal network. This complex plays a critical role in erythrocyte shape and deformability. Mutations in this gene are associated with type 1 elliptocytosis (EL1). Alternatively spliced transcript variants encoding different isoforms have been described for this gene.[provided by RefSeq, Oct 2009],

matters needing attention

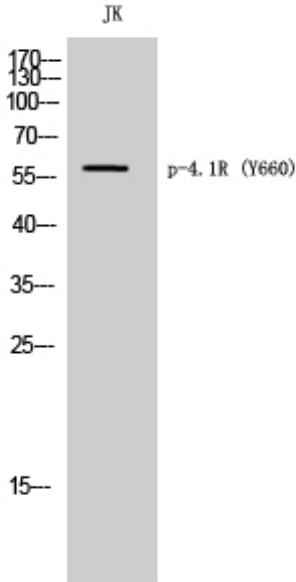
Avoid repeated freezing and thawing!

Usage suggestions

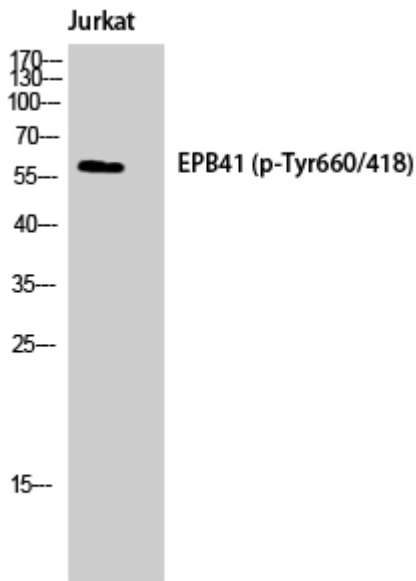
This product can be used in immunological reaction related experiments. For more information, please consult technical personnel.



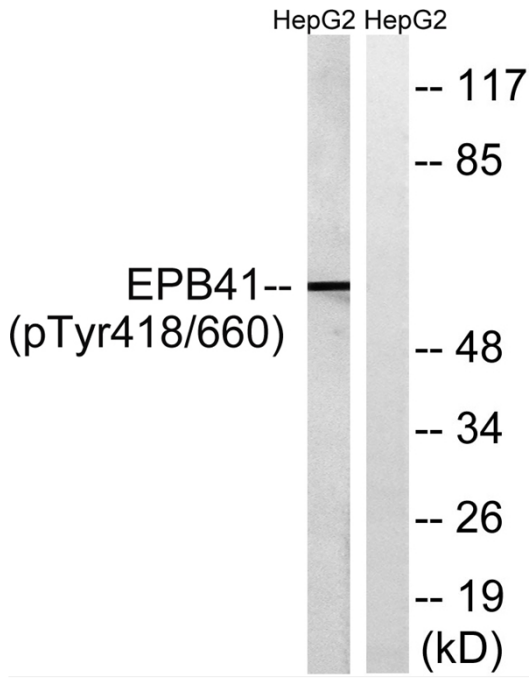
Products Images



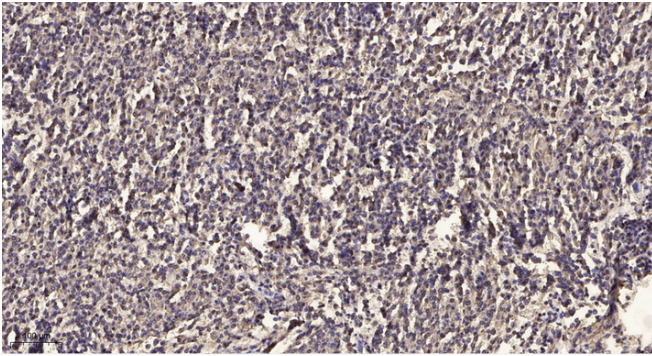
Western Blot analysis of JK cells using Phospho-4.1R (Y660) Polyclonal Antibody



Western Blot analysis of Jurkat cells using Phospho-4.1R (Y660) Polyclonal Antibody



Western blot analysis of lysates from HepG2 cells treated with PMA 125ng/ml 30', using EPB41 (Phospho-Tyr660/418) Antibody. The lane on the right is blocked with the phospho peptide.



Immunohistochemical analysis of paraffin-embedded human meningioma. 1, Antibody was diluted at 1:200(4 ° overnight). 2, Tris-EDTA, pH9.0 was used for antigen retrieval. 3, Secondary antibody was diluted at 1:200(room temperature, 45min).