



# Shb (phospho Tyr246) Polyclonal Antibody

<b>Catalog No</b>	BYab-03532
<b>Isotype</b>	IgG
<b>Reactivity</b>	Human;Mouse
<b>Applications</b>	WB;IHC
<b>Gene Name</b>	SHB
<b>Protein Name</b>	SH2 domain-containing adapter protein B
<b>Immunogen</b>	Synthesized phospho-peptide around the phosphorylation site of human Shb (phospho Tyr246)
<b>Specificity</b>	Phospho-Shb (Y246) Polyclonal Antibody detects endogenous levels of Shb protein only when phosphorylated at Y246.
<b>Formulation</b>	Liquid in PBS containing 50% glycerol, 0.5% BSA and 0.02% sodium azide.
<b>Source</b>	Polyclonal, Rabbit,IgG
<b>Purification</b>	The antibody was affinity-purified from rabbit antiserum by affinity-chromatography using epitope-specific immunogen.
<b>Dilution</b>	WB 1:500-2000;IHC-p 1:50-300
<b>Concentration</b>	1 mg/ml
<b>Purity</b>	≥90%
<b>Storage Stability</b>	-20°C/1 year
<b>Synonyms</b>	SHB; SH2 domain-containing adapter protein B
<b>Observed Band</b>	55kD
<b>Cell Pathway</b>	Cytoplasm. Cell membrane; Peripheral membrane protein; Cytoplasmic side. Associates with membrane lipid rafts upon TCR stimulation.
<b>Tissue Specificity</b>	Widely expressed.
<b>Function</b>	domain:The SH2 domain preferentially binds phosphopeptides with the consensus sequence Y-[TVI]-X-L and mediates interaction with PDGFRA, PDGFRB, FGRFR1, IL2RB, IL2RG, CD3Z and CRK/CrKII.,function:Adapter protein which regulates several signal transduction cascades by linking activated receptors to downstream signaling components. May play a role in angiogenesis by regulating FGFR1, VEGFR2 and PDGFR signaling. May also play a role in T-cell antigen receptor/TCR signaling, interleukin-2 signaling, apoptosis and neuronal cells differentiation by mediating basic-FGF and NGF-induced signaling cascades. May also regulate IRS1 and IRS2 signaling in insulin-producing cells.,PTM:Phosphorylated upon PDGFRA, PDGFRB, TCR, IL2 receptor, FGRF1 or VEGFR2 activation.,similarity:Contains 1 SH2 domain.,subcellular

Nanjing BYabscience technology Co.,Ltd



location:Associates with membrane lipid rafts upon TCR stimulation.,subunit:Interacts with P

### Background

domain:The SH2 domain preferentially binds phosphopeptides with the consensus sequence Y-[TVI]-X-L and mediates interaction with PDGFRA, PDGFRB, FGRFR1, IL2RB, IL2RG, CD3Z and CRK/CrKII.,function:Adapter protein which regulates several signal transduction cascades by linking activated receptors to downstream signaling components. May play a role in angiogenesis by regulating FGFR1, VEGFR2 and PDGFR signaling. May also play a role in T-cell antigen receptor/TCR signaling, interleukin-2 signaling, apoptosis and neuronal cells differentiation by mediating basic-FGF and NGF-induced signaling cascades. May also regulate IRS1 and IRS2 signaling in insulin-producing cells.,PTM:Phosphorylated upon PDGFRA, PDGFRB, TCR, IL2 receptor, FGRF1 or VEGFR2 activation.,similarity:Contains 1 SH2 domain.,subcellular location:Associates with membrane lipid rafts upon TCR stimulation.,subunit:Interacts with PTPN11 (By similarity). Interacts with phosphorylated 'Tyr-720' of the ligand-activated receptor PDGFRA via its SH2 domain. Interacts with the ligand-activated receptors PDGFRB, FGFR1, KDR/VEGFR2, IL2RB and IL2RG. Interacts with EPS8 and V-SRC. Interacts with GRB2 and GRAP. Interacts with CD3Z. Interacts with tyrosine-phosphorylated LAT upon T-cell antigen receptor activation. Interacts with PLCG1. Interacts with ZAP70, LCP2/SLP-76, VAV1 and GRAP2. Interacts with JAK1 and JAK3. Interacts with PTK2/FAK1. Interacts with CRK/CrKII. Interacts with IRS2.,tissue specificity:Widely expressed.,

### matters needing attention

Avoid repeated freezing and thawing!

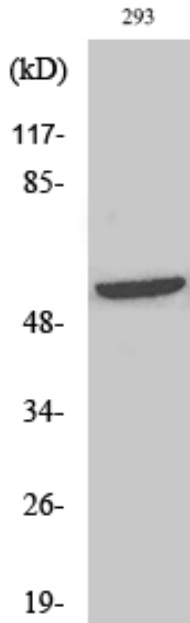
### Usage suggestions

This product can be used in immunological reaction related experiments. For more information, please consult technical personnel.

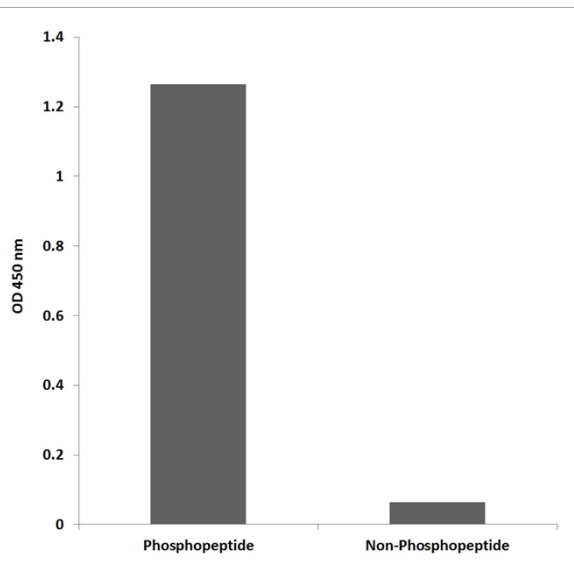
Nanjing BYabscience technology Co.,Ltd



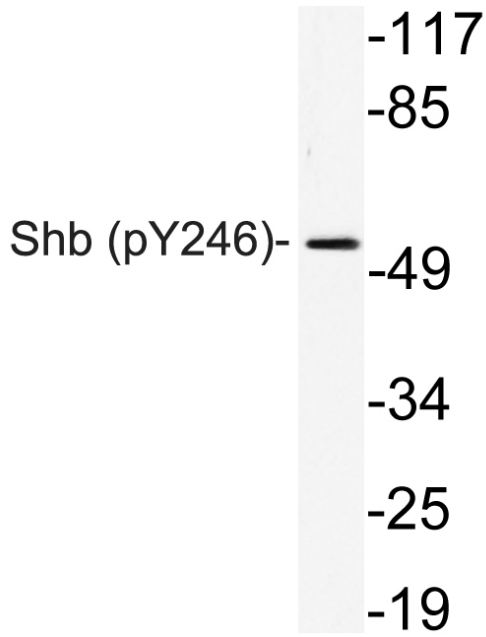
## Products Images



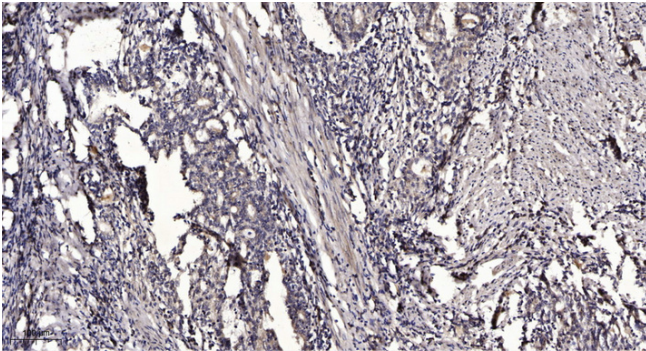
Western Blot analysis of various cells using Phospho-Shb (Y246) Polyclonal Antibody



Enzyme-Linked Immunosorbent Assay (Phospho-ELISA) for Immunogen Phosphopeptide (Phospho-left) and Non-Phosphopeptide (Phospho-right), using Shb (Phospho-Tyr246) Antibody



Western blot analysis of lysate from 293 cells, using phospho-Serhb (Phospho-Tyr246) antibody.



Immunohistochemical analysis of paraffin-embedded human Gastric adenocarcinoma. 1, Antibody was diluted at 1:200(4° overnight). 2, Tris-EDTA,pH9.0 was used for antigen retrieval. 3,Secondary antibody was diluted at 1:200(room temperature, 45min).