



Dok-2 (phospho Tyr299) Polyclonal Antibody

Catalog No	BYab-03514
Isotype	IgG
Reactivity	Human;Mouse;Monkey
Applications	WB;IF;ELISA
Gene Name	DOK2
Protein Name	Docking protein 2
Immunogen	The antiserum was produced against synthesized peptide derived from human p56 Dok-2 around the phosphorylation site of Tyr299. AA range:266-315
Specificity	Phospho-Dok-2 (Y299) Polyclonal Antibody detects endogenous levels of Dok-2 protein only when phosphorylated at Y299.
Formulation	Liquid in PBS containing 50% glycerol, 0.5% BSA and 0.02% sodium azide.
Source	Polyclonal, Rabbit,IgG
Purification	The antibody was affinity-purified from rabbit antiserum by affinity-chromatography using epitope-specific immunogen.
Dilution	Western Blot: 1/500 - 1/2000. Immunofluorescence: 1/200 - 1/1000. ELISA: 1/20000. Not yet tested in other applications.
Concentration	1 mg/ml
Purity	≥90%
Storage Stability	-20°C/1 year
Synonyms	DOK2; Docking protein 2; Downstream of tyrosine kinase 2; p56(dok-2)
Observed Band	48kD
Cell Pathway	cytosol,
Tissue Specificity	Highly expressed in peripheral blood leukocytes, lymph nodes and spleen. Lower expression in thymus, bone marrow and fetal liver.
Function	domain:PTB domain mediates receptor interaction.,function:DOK proteins are enzymatically inert adaptor or scaffolding proteins. They provide a docking platform for the assembly of multimolecular signaling complexes. DOK2 may modulate the cellular proliferation induced by IL-4, as well as IL-2 and IL-3. May be involved in modulating Bcr-Abl signaling. Attenuates EGF-stimulated MAP kinase activation.,PTM:On immunoreceptor stimulation, phosphorylated on C-terminal tyrosine residues. Phosphorylation on Tyr-345 is required for binding to the SH2 domain of NCK. Phosphorylation on both Tyr-271 and Tyr-299 is required for interaction with RASGAP.,similarity:Belongs to the DOK family. Type A subfamily.,similarity:Contains 1 IRS-type PTB domain.,similarity:Contains 1 PH

Nanjing BYabscience technology Co.,Ltd



domain.,subunit:Interacts with phosphorylated RASGAP and EGFR. Interacts with RET and NCK.,tissue specificity:Highly expressed in

Background

docking protein 2(DOK2) Homo sapiens The protein encoded by this gene is constitutively tyrosine phosphorylated in hematopoietic progenitors isolated from chronic myelogenous leukemia (CML) patients in the chronic phase. It may be a critical substrate for p210(bcr/abl), a chimeric protein whose presence is associated with CML. This encoded protein binds p120 (RasGAP) from CML cells. [provided by RefSeq, Jul 2008],

matters needing attention

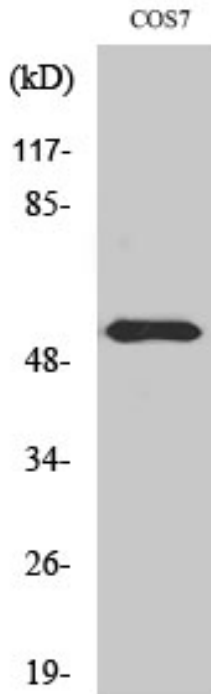
Avoid repeated freezing and thawing!

Usage suggestions

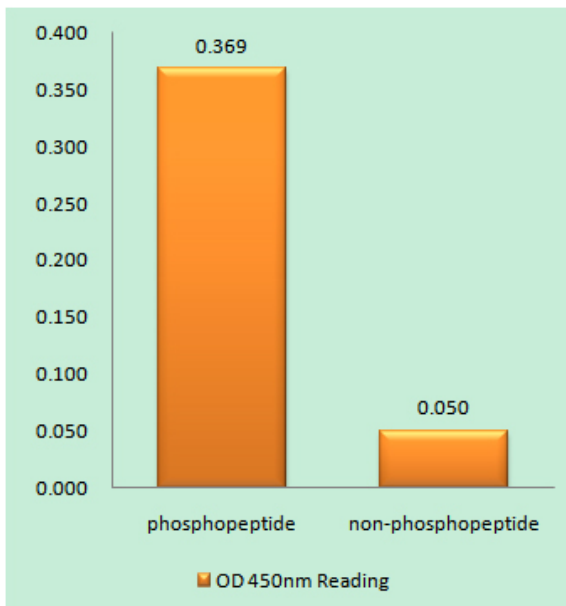
This product can be used in immunological reaction related experiments. For more information, please consult technical personnel.



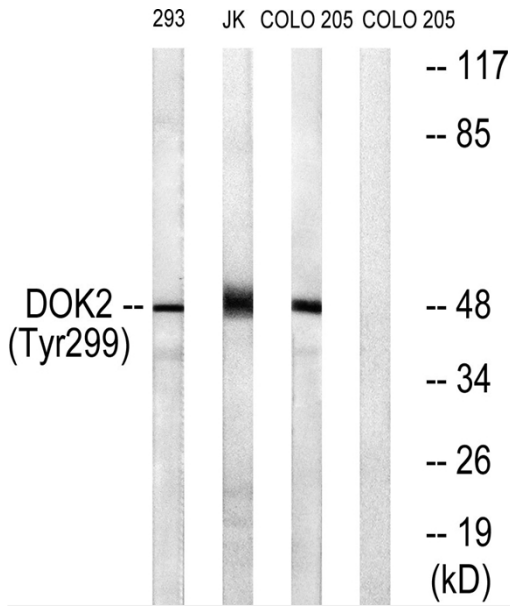
Products Images



Western Blot analysis of various cells using Phospho-Dok-2 (Y299) Polyclonal Antibody



Enzyme-Linked Immunosorbent Assay (Phospho-ELISA) for Immunogen Phosphopeptide (Phospho-left) and Non-Phosphopeptide (Phospho-right), using p56 Dok-2 (Phospho-Tyr299) Antibody



Western blot analysis of lysates from COS7 cells treated with insulin 0.01U/ml 15', Jurkat cells treated with insulin 0.01U/ml 15' and 293 cells treated with serum 20% 15', using p56 Dok-2 (Phospho-Tyr299) Antibody. The lane on the right is blocked with the phospho peptide.