



Hsp27 mouse mAb

Catalog No	BYab-03464
Isotype	IgG
Reactivity	Human;Monkey
Applications	WB;ICC
Gene Name	hspb1
Protein Name	
Immunogen	Purified recombinant human Hsp27 protein fragments expressed in E.coli.
Specificity	This antibody detects endogenous levels of Hsp27 and does not cross-react with related proteins.
Formulation	Liquid in PBS containing 50% glycerol, 0.5% BSA and 0.02% sodium azide.
Source	Monoclonal, Mouse
Purification	The antibody was affinity-purified from mouse ascites by affinity-chromatography using epitope-specific immunogen.
Dilution	wb 1:1000 icc 1:300
Concentration	1 mg/ml
Purity	≥90%
Storage Stability	-20°C/1 year
Synonyms	Heat shock 27kDa protein;28 kDa heat shock protein;CMT2F;DKFZp586P1322;Estrogen regulated 24 kDa protein;Estrogen-regulated 24 kDa protein;Heat shock 25kDa protein 1;Heat shock 27 kDa protein;Heat shock 27kD protein 1;Heat shock 27kDa protein 1;Heat shock 28kDa protein 1;Heat Shock Protein 27;Heat Shock Protein 27;Heat shock protein beta 1;Heat shock protein beta-1;HMN2B;HS.76067;Hsp 25;HSP 27;Hsp 28;Hsp B1;Hsp25;HSP27; Hsp28;HspB1;HSPB1_HUMAN;SRP27;Stress responsive protein 27;Stress-responsive protein 27.
Observed Band	27kD
Cell Pathway	Cytoplasm . Nucleus . Cytoplasm, cytoskeleton, spindle . Cytoplasmic in interphase cells. Colocalizes with mitotic spindles in mitotic cells. Translocates to the nucleus during heat shock and resides in sub-nuclear structures known as SC35 speckles or nuclear splicing speckles. .
Tissue Specificity	Detected in all tissues tested: skeletal muscle, heart, aorta, large intestine, small intestine, stomach, esophagus, bladder, adrenal gland, thyroid, pancreas, testis,

Nanjing BYabscience technology Co.,Ltd



adipose tissue, kidney, liver, spleen, cerebral cortex, blood serum and cerebrospinal fluid. Highest levels are found in the heart and in tissues composed of striated and smooth muscle.

Function

disease:Defects in HSPB1 are a cause of distal hereditary motor neuropathy type 2B (HMN2B) [MIM:608634]. Distal hereditary motor neuropathies constitute a heterogeneous group of neuromuscular disorders caused by selective impairment of motor neurons in the anterior horn of the spinal cord, without sensory deficit in the posterior horn. The overall clinical picture consists of a classical distal muscular atrophy syndrome in the legs without clinical sensory loss. The disease starts with weakness and wasting of distal muscles of the anterior tibial and peroneal compartments of the legs. Later on, weakness and atrophy may expand to the proximal muscles of the lower limbs and/or to the distal upper limbs.,disease:Defects in HSPB1 are the cause of Charcot-Marie-Tooth disease type 2F (CMT2F) [MIM:606595]. CMT2F is a form of Charcot-Marie-Tooth disease, the most common inherited disorder of

Background

The protein encoded by this gene is induced by environmental stress and developmental changes. The encoded protein is involved in stress resistance and actin organization and translocates from the cytoplasm to the nucleus upon stress induction. Defects in this gene are a cause of Charcot-Marie-Tooth disease type 2F (CMT2F) and distal hereditary motor neuropathy (dHMN). [provided by RefSeq, Oct 2008],

matters needing attention

Avoid repeated freezing and thawing!

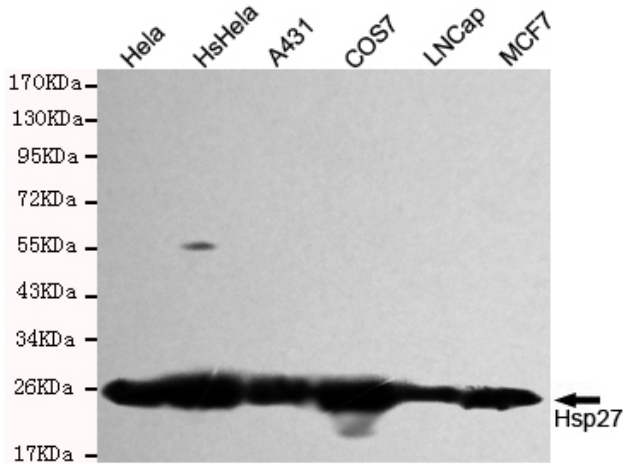
Usage suggestions

This product can be used in immunological reaction related experiments. For more information, please consult technical personnel.

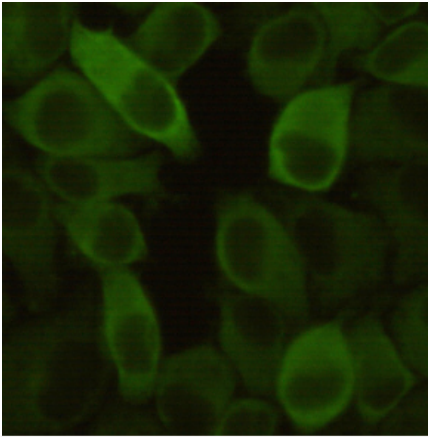
Nanjing BYabscience technology Co.,Ltd



Products Images



Western blot detection of Hsp27 in HeLa, HsHela, A431, COS7, Lncap and MCF7 cell lysates and using Hsp27 mouse mAb (1:1000 diluted). Predicted band size: 23KDa. Observed band size: 27KDa.



Immunocytochemistry stain of HeLa using Hsp27 mouse mAb (1:300).