



WIF-1 Monoclonal Antibody

Catalog No	BYab-03425
Isotype	IgG
Reactivity	Human
Applications	WB;IHC;IF;ELISA
Gene Name	WIF1
Protein Name	Wnt inhibitory factor 1
Immunogen	Purified recombinant fragment of human WIF-1 expressed in E. Coli.
Specificity	WIF-1 Monoclonal Antibody detects endogenous levels of WIF-1 protein.
Formulation	Ascitic fluid containing 0.03% sodium azide,0.5% BSA, 50%glycerol.
Source	Monoclonal, Mouse
Purification	Affinity purification
Dilution	Western Blot: 1/500 - 1/2000. Immunohistochemistry: 1/200 - 1/1000. Immunofluorescence: 1/200 - 1/1000. ELISA: 1/10000. Not yet tested in other applications.
Concentration	1 mg/ml
Purity	≥90%
Storage Stability	-20°C/1 year
Synonyms	WIF1; Wnt inhibitory factor 1; WIF-1
Observed Band	
Cell Pathway	Secreted.
Tissue Specificity	Brain,
Function	function: Binds to WNT proteins and inhibits their activities. May be involved in mesoderm segmentation., similarity: Contains 1 WIF domain., similarity: Contains 5 EGF-like domains.,
Background	The protein encoded by this gene functions to inhibit WNT proteins, which are extracellular signaling molecules that play a role in embryonic development. This protein contains a WNT inhibitory factor (WIF) domain and five epidermal growth factor (EGF)-like domains, and is thought to be involved in mesoderm segmentation. This gene functions as a tumor suppressor gene, and has been found to be epigenetically silenced in various cancers. [provided by RefSeq, Jun 2010],

Nanjing BYabscience technology Co.,Ltd



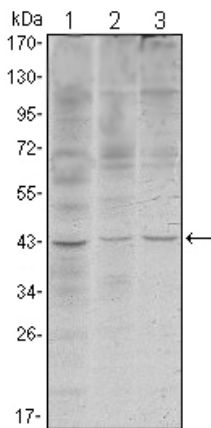
matters needing attention

Avoid repeated freezing and thawing!

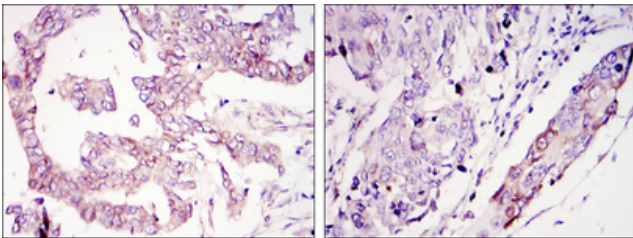
Usage suggestions

This product can be used in immunological reaction related experiments. For more information, please consult technical personnel.

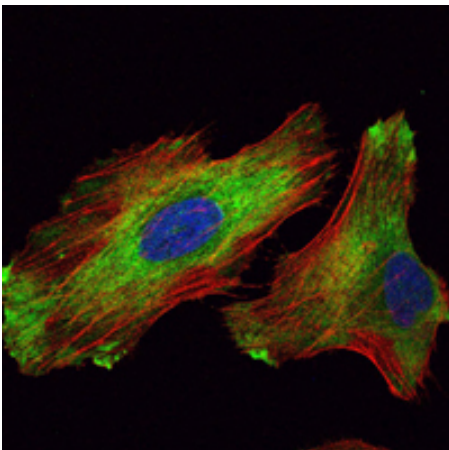
Products Images



Western Blot analysis using WIF-1 Monoclonal Antibody against HeLa (1), NIH/3T3 (2) and NTERA-2 (3) cell lysate.



Immunohistochemistry analysis of paraffin-embedded ovary tumour tissues (left) and lung cancer (right) with DAB staining using WIF-1 Monoclonal Antibody.



Immunofluorescence analysis of HeLa cells using WIF-1 Monoclonal Antibody (green). Red: Actin filaments have been labeled with Alexa Fluor-555 phalloidin.