



Ribosomal Protein S27 Monoclonal Antibody

Catalog No	BYab-03419
Isotype	IgG
Reactivity	Human
Applications	IF;ELISA
Gene Name	RPS27
Protein Name	40S ribosomal protein S27
Immunogen	Purified recombinant fragment of Ribosomal Protein S27 expressed in E. Coli.
Specificity	Ribosomal Protein S27 Monoclonal Antibody detects endogenous levels of Ribosomal Protein S27 protein.
Formulation	Ascitic fluid containing 0.03% sodium azide,0.5% BSA, 50%glycerol.
Source	Monoclonal, Mouse
Purification	Affinity purification
Dilution	Immunofluorescence: 1/200 - 1/1000. ELISA: 1/10000. Not yet tested in other applications.
Concentration	1 mg/ml
Purity	≥90%
Storage Stability	-20°C/1 year
Synonyms	RPS27; MPS1; 40S ribosomal protein S27; Metallopan-stimulin 1; MPS-1
Observed Band	
Cell Pathway	nucleus,nucleoplasm,cytosol,ribosome,cytosolic small ribosomal subunit,
Tissue Specificity	Expressed in a wide variety of actively proliferating cells and tumor tissues.
Function	caution:Was originally (PubMed:8407955) thought to be a protein that could have played a role as a potentially important mediator of cellular proliferative responses to various growth factors and other environmental signals. Capable of specific binding to a cAMP response element in DNA.,cofactor:binds 1 zinc ion per subunit.,cofactor:binds 1 zinc ion per subunit.,similarity:Belongs to the ribosomal protein S27e family.,tissue specificity:Expressed in a wide variety of actively proliferating cells and tumor tissues.,
Background	Ribosomes, the organelles that catalyze protein synthesis, consist of a small 40S subunit and a large 60S subunit. Together these subunits are composed of 4 RNA species and approximately 80 structurally distinct proteins. This gene encodes a ribosomal protein that is a component of the 40S subunit. The protein belongs to the S27E family of ribosomal proteins. It contains a C4-type zinc finger domain

Nanjing BYabscience technology Co.,Ltd



that can bind to zinc. The encoded protein has been shown to be able to bind to nucleic acid. It is located in the cytoplasm as a ribosomal component, but it has also been detected in the nucleus. Studies in rat indicate that ribosomal protein S27 is located near ribosomal protein S18 in the 40S subunit and is covalently linked to translation initiation factor eIF3. As is typical for genes encoding ribosomal proteins, there are multiple processed pseudogenes of this gene dispersed through the genome. [pr

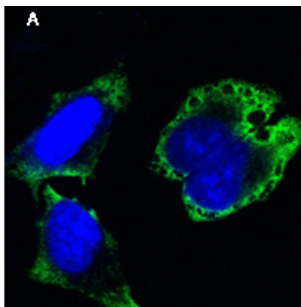
matters needing attention

Avoid repeated freezing and thawing!

Usage suggestions

This product can be used in immunological reaction related experiments. For more information, please consult technical personnel.

Products Images



Confocal immunofluorescence analysis of HeLa cells (A), BCBL-1 cells (B) and L1210 cells (C) using Ribosomal Protein S27 Monoclonal Antibody (green). Blue: DRAQ5 fluorescent DNA dye.

