



Lipocalin-1 Monoclonal Antibody

Catalog No	BYab-03410
Isotype	IgG
Reactivity	Human
Applications	WB;IHC;IF;ELISA
Gene Name	LCN1
Protein Name	Lipocalin-1
Immunogen	Purified recombinant fragment of Lipocalin-1 expressed in E. Coli.
Specificity	Lipocalin-1 Monoclonal Antibody detects endogenous levels of Lipocalin-1 protein.
Formulation	Ascitic fluid containing 0.03% sodium azide,0.5% BSA, 50%glycerol.
Source	Monoclonal, Mouse
Purification	Affinity purification
Dilution	Western Blot: 1/500 - 1/2000. Immunohistochemistry: 1/200 - 1/1000. Immunofluorescence: 1/200 - 1/1000. ELISA: 1/10000. Not yet tested in other applications.
Concentration	1 mg/ml
Purity	≥90%
Storage Stability	-20°C/1 year
Synonyms	LCN1; VEGP; Lipocalin-1; Tear lipocalin; Tlc; Tear prealbumin; TP; Von Ebner gland protein; VEG protein
Observed Band	
Cell Pathway	Secreted.
Tissue Specificity	Mainly expressed in lachrymal and salivary glands. Also expressed in the prostate.
Function	caution:Could be the product of a pseudogene.,function:Could play a role in taste reception. Could be necessary for the concentration and delivery of sapid molecules in the gustatory system. Can bind various ligands, with chemical structures ranging from lipids and retinoids to the macrocyclic antibiotic rifampicin and even to microbial siderophores. Exhibits an extremely wide ligand pocket.,function:May bind a variety of ligands including lipids.,similarity:Belongs to the calycin superfamily. Lipocalin family.,subunit:Homodimer (By similarity). Binds to LMBR1L which may mediate its endocytosis.,tissue specificity:Mainly expressed in lachrymal and salivary glands. Also expressed in the prostate.,

Nanjing BYabscience technology Co.,Ltd



Background

This gene encodes a member of the lipocalin family of small secretory proteins. Lipocalins are extracellular transport proteins that bind to a variety of hydrophobic ligands. The encoded protein is the primary lipid binding protein in tears and is overproduced in response to multiple stimuli including infection and stress. The encoded protein may be a marker for chromosome aneuploidy as well as an autoantigen in Sjogren's syndrome. Alternatively spliced transcript variants encoding multiple isoforms have been observed for this gene, and two pseudogenes of this gene are also located on the long arm of chromosome 9. [provided by RefSeq, Nov 2011],

matters needing attention

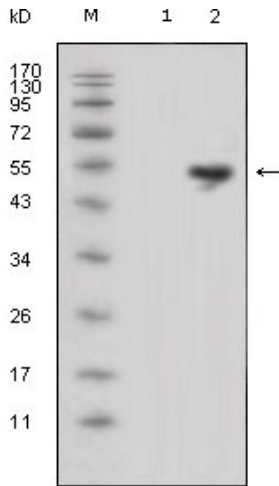
Avoid repeated freezing and thawing!

Usage suggestions

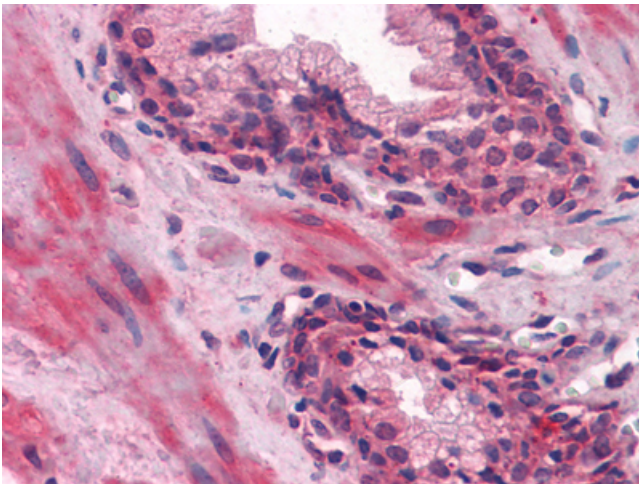
This product can be used in immunological reaction related experiments. For more information, please consult technical personnel.



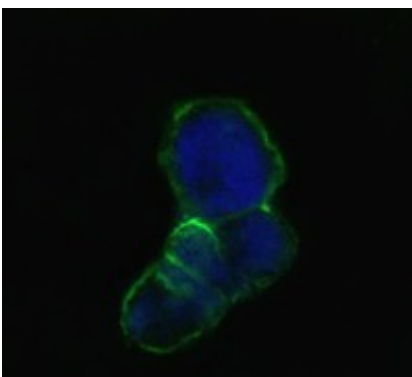
Products Images



Western Blot analysis using Lipocalin-1 Monoclonal Antibody against HEK293 (1) and LCN1-hlgGfc transfected HEK293 cell lysate (2).



Immunohistochemistry analysis of paraffin-embedded human Prostate tissues with AEC staining using Lipocalin-1 Monoclonal Antibody.



Confocal immunofluorescence analysis of methanol-fixed HEK293 cells transfected with LCN1-hlgGfc using Lipocalin-1 Monoclonal Antibody (green), showing membrane localization. Blue: DRAQ5 fluorescent DNA dye.

Nanjing BYabscience technology Co.,Ltd