



Crk-L Monoclonal Antibody

Catalog No	BYab-03389
Isotype	IgG
Reactivity	Human
Applications	WB;FCM;ELISA
Gene Name	CRKL
Protein Name	Crk-like protein
Immunogen	Purified recombinant fragment of human Crk-L expressed in E. Coli.
Specificity	Crk-L Monoclonal Antibody detects endogenous levels of Crk-L protein.
Formulation	Ascitic fluid containing 0.03% sodium azide,0.5% BSA, 50%glycerol.
Source	Monoclonal, Mouse
Purification	Affinity purification
Dilution	Western Blot: 1/500 - 1/2000. Flow cytometry: 1/200 - 1/400. ELISA: 1/10000. Not yet tested in other applications.
Concentration	1 mg/ml
Purity	≥90%
Storage Stability	-20°C/1 year
Synonyms	CRKL; Crk-like protein
Observed Band	
Cell Pathway	endosome,cytosol,cell-cell adherens junction,extracellular exosome,
Tissue Specificity	Skin,Spleen,
Function	function:May mediate the transduction of intracellular signals.,similarity:Contains 1 SH2 domain.,similarity:Contains 2 SH3 domains.,subunit:Interacts with INPP5D/SHIP1. Interacts with DOCK2 and EPOR. Interacts with phosphorylated CBLB and IRS4.,
Background	This gene encodes a protein kinase containing SH2 and SH3 (src homology) domains which has been shown to activate the RAS and JUN kinase signaling pathways and transform fibroblasts in a RAS-dependent fashion. It is a substrate of the BCR-ABL tyrosine kinase, plays a role in fibroblast transformation by BCR-ABL, and may be oncogenic.[provided by RefSeq, Jan 2009],
matters needing attention	Avoid repeated freezing and thawing!

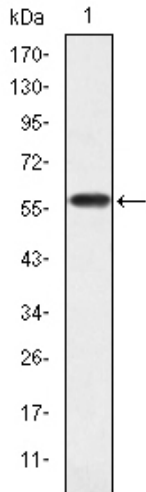
Nanjing BYabscience technology Co.,Ltd



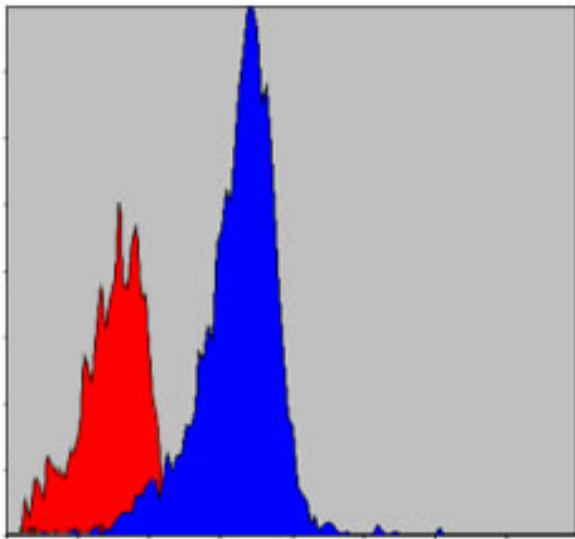
Usage suggestions

This product can be used in immunological reaction related experiments. For more information, please consult technical personnel.

Products Images



Western Blot analysis using Crk-L Monoclonal Antibody against human Crk-L (AA: 100-303) recombinant protein.



Flow cytometric analysis of NIH/3T3 cells using Crk-L Monoclonal Antibody (blue) and negative control (red).

Nanjing BYabscience technology Co.,Ltd

