



14-3-3-pan (Acetyl Lys51/49) Polyclonal Antibody

Catalog No	BYab-03373
Isotype	IgG
Reactivity	Human;Mouse;Rat
Applications	WB;ELISA
Gene Name	YWHAB/YWHAG/YWHAQ/YWHAZ/SFN
Protein Name	14-3-3 protein beta/alpha/14-3-3 protein gamma/14-3-3 protein theta/14-3-3 protein zeta/delta/14-3-3 protein sigma
Immunogen	Synthesized acetyl-peptide derived from human 14-3-3-pan around the acetylation site of K51.
Specificity	Acetyl-14-3-3-pan (K51/49) Polyclonal Antibody detects endogenous levels of 14-3-3-pan around the acetylation site of K51 protein.
Formulation	Liquid in PBS containing 50% glycerol, 0.5% BSA and 0.02% sodium azide.
Source	Polyclonal, Rabbit,IgG
Purification	The antibody was affinity-purified from rabbit antiserum by affinity-chromatography using epitope-specific immunogen.
Dilution	Western Blot: 1/500 - 1/2000. ELISA: 1/10000. Not yet tested in other applications.
Concentration	1 mg/ml
Purity	≥90%
Storage Stability	-20°C/1 year
Synonyms	YWHAB; 14-3-3 protein beta/alpha; Protein 1054; Protein kinase C inhibitor protein 1; KCIP-1; YWHAG; 14-3-3 protein gamma; Protein kinase C inhibitor protein 1; KCIP-1; YWHAQ; 14-3-3 protein theta; 14-3-3 protein T-cell; 14-3-3 protein tau; Protein HS1; YWHAZ; 14-3-3 protein zeta/delta; Protein kinase C inhibitor protein 1; KCIP-1; SFN; HME1; 14-3-3 protein sigma; Epithelial cell marker protein 1; Stratifin
Observed Band	30kD
Cell Pathway	Cytoplasm . Melanosome . Identified by mass spectrometry in melanosome fractions from stage I to stage IV.; Vacuole membrane . (Microbial infection) Upon infection with Chlamydia trachomatis, this protein is associated with the pathogen-containing vacuole membrane where it colocalizes with IncG. .
Tissue Specificity	Brain,Colon carcinoma,Kerat
Function	function:Adapter protein implicated in the regulation of a large spectrum of both general and specialized signaling pathway. Binds to a large number of partners,

Nanjing BYabscience technology Co.,Ltd



usually by recognition of a phosphoserine or phosphothreonine motif. Binding generally results in the modulation of the activity of the binding partner. Negative regulator of osteogenesis.,PTM:Isoform Short contains a N-acetylmethionine at position 1.,PTM:The alpha, brain-specific form differs from the beta form in being phosphorylated.,similarity:Belongs to the 14-3-3 family.,subcellular location:Identified by mass spectrometry in melanosome fractions from stage I to stage IV.,subunit:Homodimer. Interacts with SSH1 and TORC2/CRTC2. Interacts with ABL1; the interaction results in cytoplasmic location of ABL1 and inhibition of cABL-mediated apoptosis. Interacts with ROR2 (dimer); the interaction results in phosphorylation of YWHAB

Background

This gene encodes a protein belonging to the 14-3-3 family of proteins, members of which mediate signal transduction by binding to phosphoserine-containing proteins. This highly conserved protein family is found in both plants and mammals. The encoded protein has been shown to interact with RAF1 and CDC25 phosphatases, suggesting that it may play a role in linking mitogenic signaling and the cell cycle machinery. Two transcript variants, which encode the same protein, have been identified for this gene. [provided by RefSeq, Jul 2008],

matters needing attention

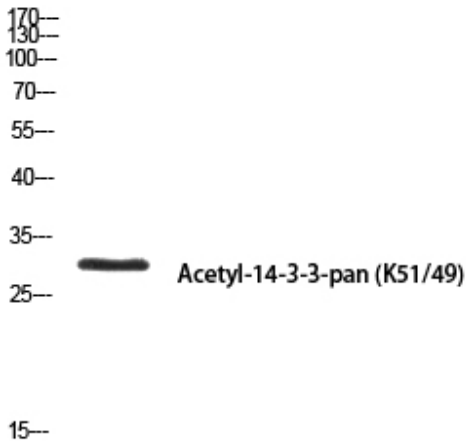
Avoid repeated freezing and thawing!

Usage suggestions

This product can be used in immunological reaction related experiments. For more information, please consult technical personnel.

Products Images

MOUSE-SPLEEN



Western blot analysis of MOUSE-SPLEEN using Acetyl-14-3-3-pan (K51/49) antibody. Antibody was diluted at 1:500. Secondary antibody(catalog#:RS0002) was diluted at 1:20000

Nanjing BYabscience technology Co.,Ltd