



Cleaved-Plasma Kallikrein HC (R390) Polyclonal Antibody

Catalog No	BYab-03356
Isotype	IgG
Reactivity	Human;Rat;Mouse;
Applications	WB;IHC;IF;ELISA
Gene Name	KLKB1
Protein Name	Plasma kallikrein
Immunogen	The antiserum was produced against synthesized peptide derived from human KLKB1. AA range:341-390
Specificity	Cleaved-Plasma Kallikrein HC (R390) Polyclonal Antibody detects endogenous levels of fragment of activated Plasma Kallikrein HC protein resulting from cleavage adjacent to R390.
Formulation	Liquid in PBS containing 50% glycerol, 0.5% BSA and 0.02% sodium azide.
Source	Polyclonal, Rabbit,IgG
Purification	The antibody was affinity-purified from rabbit antiserum by affinity-chromatography using epitope-specific immunogen.
Dilution	WB: 1/500 - 1/2000. IHC: 1/100 - 1/300. ELISA: 1/10000.. IF 1:50-200
Concentration	1 mg/ml
Purity	≥90%
Storage Stability	-20°C/1 year
Synonyms	KLKB1; KLK3; Plasma kallikrein; Fletcher factor; Kininogenin; Plasma prekallikrein
Observed Band	45kD
Cell Pathway	Secreted.
Tissue Specificity	Colon,Liver,Plasma,
Function	catalytic activity:Cleaves selectively Arg-I-Xaa and Lys-I-Xaa bonds, including Lys-I-Arg and Arg-I-Ser bonds in (human) kininogen to release bradykinin.,disease:Defects in KLKB1 are the cause of prekallikrein deficiency (PKK deficiency) [MIM:612423]; also called Fletcher factor deficiency. This disorder is a blood coagulation defect.,function:The enzyme cleaves Lys-Arg and Arg-Ser bonds. It activates, in a reciprocal reaction, factor XII after its binding to a negatively charged surface. It also releases bradykinin from HMW kininogen and

Nanjing BYabscience technology Co.,Ltd



may also play a role in the renin-angiotensin system by converting prorenin into renin.,similarity:Belongs to the peptidase S1 family.,similarity:Belongs to the peptidase S1 family. Plasma kallikrein subfamily.,similarity:Contains 1 peptidase S1 domain.,similarity:Contains 4 apple domains.,subunit:The zymogen is activated by factor XIIa, which cleaves t

Background

This gene encodes a glycoprotein that participates in the surface-dependent activation of blood coagulation, fibrinolysis, kinin generation and inflammation. The encoded preproprotein present in plasma as a non-covalent complex with high molecular weight kininogen undergoes proteolytic processing mediated by activated coagulation factor XII to generate a disulfide-linked, heterodimeric serine protease comprised of heavy and light chains. Certain mutations in this gene cause prekallikrein deficiency. Alternative splicing results in multiple transcript variants encoding different isoforms. [provided by RefSeq, Jan 2016],

matters needing attention

Avoid repeated freezing and thawing!

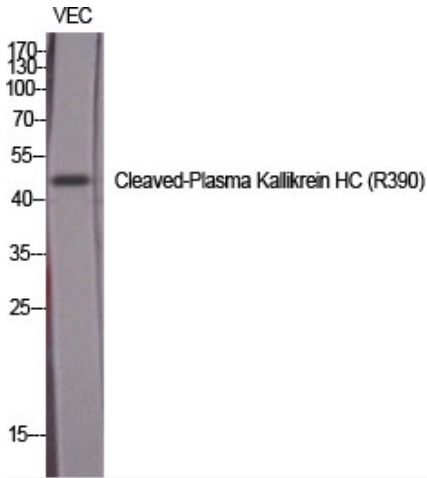
Usage suggestions

This product can be used in immunological reaction related experiments. For more information, please consult technical personnel.

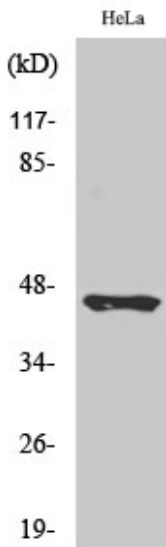
Nanjing BYabscience technology Co.,Ltd



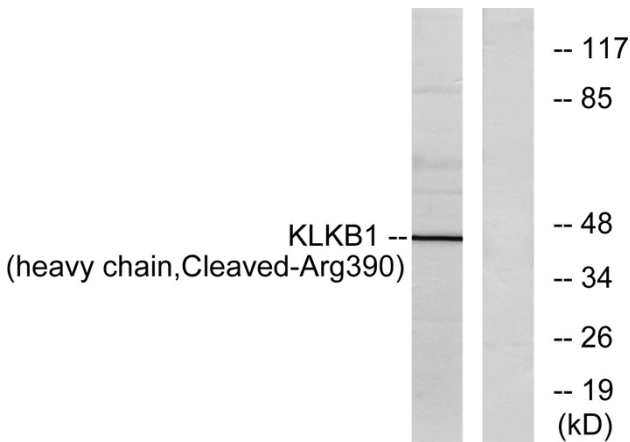
Products Images



Western Blot analysis of various cells using Cleaved-Plasma Kallikrein HC (R390) Polyclonal Antibody diluted at 1:1000

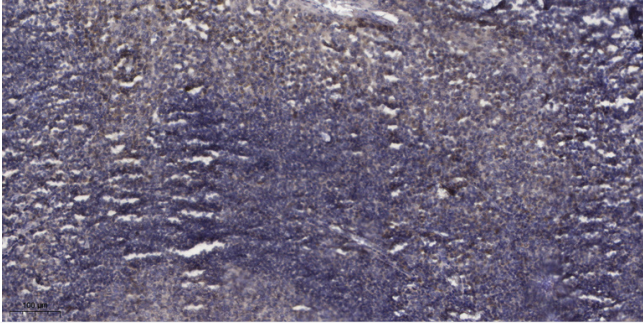


Western Blot analysis of HeLa cells using Cleaved-Plasma Kallikrein HC (R390) Polyclonal Antibody diluted at 1:1000



Western blot analysis of lysates from HeLa cells, using KLKB1 (heavy chain, Cleaved-Arg390) Antibody. The lane on the right is blocked with the synthesized peptide.

Nanjing BYabscience technology Co.,Ltd



Immunohistochemical analysis of paraffin-embedded human tonsil. 1, Antibody was diluted at 1:200(4° overnight). 2, Tris-EDTA,pH9.0 was used for antigen retrieval. 3,Secondary antibody was diluted at 1:200(room temperature, 30min).