



# Cleaved-Kininogen-1 HC (K380) Polyclonal Antibody

<b>Catalog No</b>	BYab-03354
<b>Isotype</b>	IgG
<b>Reactivity</b>	Human;Rat;Mouse;
<b>Applications</b>	WB;ELISA
<b>Gene Name</b>	KNG1
<b>Protein Name</b>	Kininogen-1
<b>Immunogen</b>	Synthesized peptide derived from Cleaved-Kininogen-1 HC (K380) . at AA range: 300-380
<b>Specificity</b>	Cleaved-Kininogen-1 HC (K380) Polyclonal Antibody detects endogenous levels of fragment of activated Kininogen-1 HC protein resulting from cleavage adjacent to K380.
<b>Formulation</b>	Liquid in PBS containing 50% glycerol, 0.5% BSA and 0.02% sodium azide.
<b>Source</b>	Polyclonal, Rabbit,IgG
<b>Purification</b>	The antibody was affinity-purified from rabbit antiserum by affinity-chromatography using epitope-specific immunogen.
<b>Dilution</b>	Western Blot: 1/500 - 1/2000. ELISA: 1/10000. Not yet tested in other applications.
<b>Concentration</b>	1 mg/ml
<b>Purity</b>	≥90%
<b>Storage Stability</b>	-20°C/1 year
<b>Synonyms</b>	KNG1; BDK; KNG; Kininogen-1; Alpha-2-thiol proteinase inhibitor; Fitzgerald factor; High molecular weight kininogen; HMWK; Williams-Fitzgerald-Flaujeac factor
<b>Observed Band</b>	41kD
<b>Cell Pathway</b>	Secreted, extracellular space.
<b>Tissue Specificity</b>	Secreted in plasma. T-kinin is detected in malignant ovarian, colon and breast carcinomas, but not in benign tumors.
<b>Function</b>	disease:Defects in KNG1 are the cause of high molecular weight kininogen deficiency (HMWK deficiency) [MIM:228960]. HMWK deficiency is an autosomal recessive coagulation defect. Patients with HWMK deficiency do not have a hemorrhagic tendency, but they exhibit abnormal surface-mediated activation of fibrinolysis.,function:(1) Kininogens are inhibitors of thiol proteases; (2) HMW-kininogen plays an important role in blood coagulation by helping to position optimally prekallikrein and factor XI next to factor XII; (3) HMW-kininogen

Nanjing BYabscience technology Co.,Ltd



inhibits the thrombin- and plasmin-induced aggregation of thrombocytes; (4) the active peptide bradykinin that is released from HMW-kininogen shows a variety of physiological effects: (4A) influence in smooth muscle contraction, (4B) induction of hypotension, (4C) natriuresis and diuresis, (4D) decrease in blood glucose level, (4E) it is a mediator of inflammati

### Background

This gene uses alternative splicing to generate two different proteins- high molecular weight kininogen (HMWK) and low molecular weight kininogen (LMWK). HMWK is essential for blood coagulation and assembly of the kallikrein-kinin system. Also, bradykinin, a peptide causing numerous physiological effects, is released from HMWK. Bradykinin also functions as an antimicrobial peptide with antibacterial and antifungal activity. In contrast to HMWK, LMWK is not involved in blood coagulation. Three transcript variants encoding different isoforms have been found for this gene.[provided by RefSeq, Nov 2014],

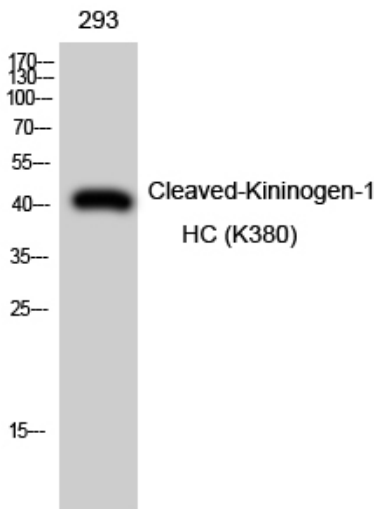
### matters needing attention

Avoid repeated freezing and thawing!

### Usage suggestions

This product can be used in immunological reaction related experiments. For more information, please consult technical personnel.

## Products Images



Western Blot analysis of 293 cells using  
Cleaved-Kininogen-1 HC (K380) Polyclonal Antibody