



# Acrosin Polyclonal Antibody

<b>Catalog No</b>	BYab-03345
<b>Isotype</b>	IgG
<b>Reactivity</b>	Human;Rat;Mouse;
<b>Applications</b>	WB;IHC;IF;ELISA
<b>Gene Name</b>	ACR
<b>Protein Name</b>	Acrosin
<b>Immunogen</b>	Synthesized peptide derived from Acrosin . at AA range: 40-120
<b>Specificity</b>	Acrosin Polyclonal Antibody detects endogenous levels of Acrosin protein.
<b>Formulation</b>	Liquid in PBS containing 50% glycerol, 0.5% BSA and 0.02% sodium azide.
<b>Source</b>	Polyclonal, Rabbit,IgG
<b>Purification</b>	The antibody was affinity-purified from rabbit antiserum by affinity-chromatography using epitope-specific immunogen.
<b>Dilution</b>	IHC-p: 100-300.WB: 1/500 - 1/2000. ELISA: 1/5000.. IF 1:50-200
<b>Concentration</b>	1 mg/ml
<b>Purity</b>	≥90%
<b>Storage Stability</b>	-20°C/1 year
<b>Synonyms</b>	ACR; ACRS; Acrosin
<b>Observed Band</b>	45kD
<b>Cell Pathway</b>	acrosomal vesicle,extracellular region,nucleus,Golgi-associated vesicle,acrosomal matrix,protein complex,
<b>Tissue Specificity</b>	Leukocyte,Testis,
<b>Function</b>	catalytic activity:Preferential cleavage: Arg- -Xaa, Lys- -Xaa.,function:Acrosin is the major protease of mammalian spermatozoa. It is a serine protease of trypsin-like cleavage specificity, it is synthesized in a zymogen form, proacrosin and stored in the acrosome.,similarity:Belongs to the peptidase S1 family.,similarity:Contains 1 peptidase S1 domain.,subunit:Heavy chain (catalytic) and a light chain linked by two disulfide bonds.,
<b>Background</b>	Acrosin is the major proteinase present in the acrosome of mature spermatozoa. It is a typical serine proteinase with trypsin-like specificity. It is stored in the acrosome in its precursor form, proacrosin. The active enzyme functions in the lysis of the zona pellucida, thus facilitating penetration of the sperm through the innermost glycoprotein layers of the ovum. The mRNA for proacrosin is

Nanjing BYabscience technology Co.,Ltd



synthesized only in the postmeiotic stages of spermatogenesis. In humans proacrosin first appears in the haploid spermatids. [provided by RefSeq, Jul 2008],

**matters needing attention**

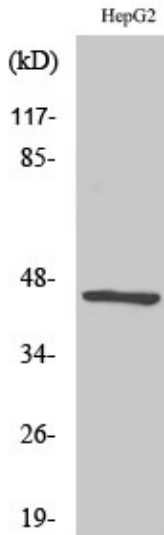
Avoid repeated freezing and thawing!

**Usage suggestions**

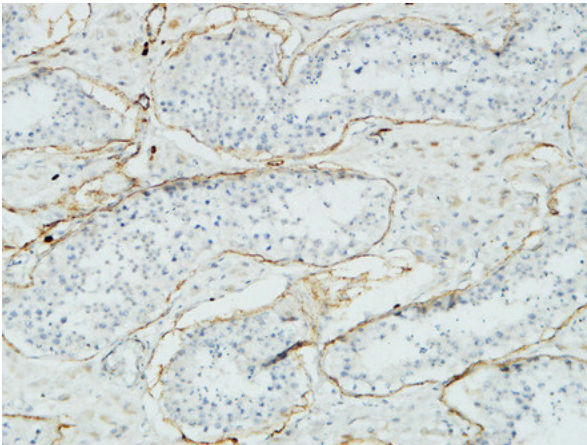
This product can be used in immunological reaction related experiments. For more information, please consult technical personnel.



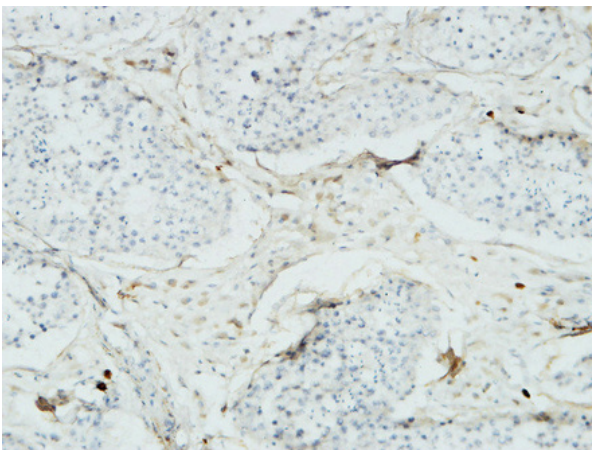
## Products Images



Western Blot analysis of various cells using Acrosin Polyclonal Antibody

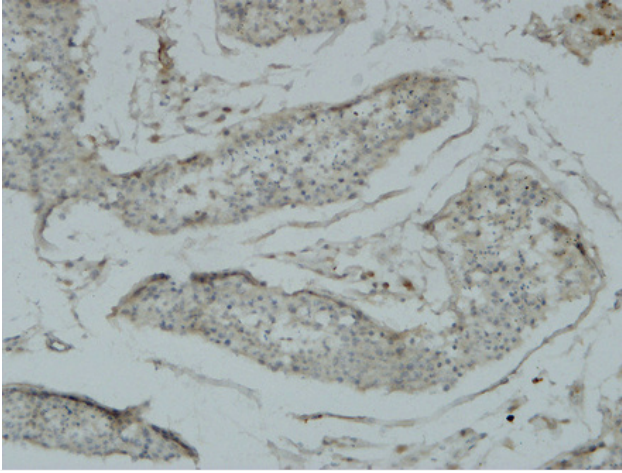


Immunohistochemical analysis of paraffin-embedded Human testis. 1, Antibody was diluted at 1:100(4° overnight). 2, High-pressure and temperature EDTA, pH8.0 was used for antigen retrieval. 3, Secondary antibody was diluted at 1:200(room temperature, 30min).



Immunohistochemical analysis of paraffin-embedded Human testis. 1, Antibody was diluted at 1:100(4° overnight). 2, High-pressure and temperature EDTA, pH8.0 was used for antigen retrieval. 3, Secondary antibody was diluted at 1:200(room temperature, 30min).

Nanjing BYabscience technology Co.,Ltd



Immunohistochemical analysis of paraffin-embedded Human testis. 1, Antibody was diluted at 1:100(4° overnight). 2, High-pressure and temperature EDTA, pH8.0 was used for antigen retrieval. 3, Secondary antibody was diluted at 1:200(room temperature, 30min).