



# TR $\alpha$ Polyclonal Antibody

<b>Catalog No</b>	BYab-03339
<b>Isotype</b>	IgG
<b>Reactivity</b>	Human;Mouse;Rat
<b>Applications</b>	WB;IHC;IF;ELISA
<b>Gene Name</b>	THRA
<b>Protein Name</b>	Thyroid hormone receptor alpha
<b>Immunogen</b>	The antiserum was produced against synthesized peptide derived from human Thyroid Hormone Receptor alpha. AA range:10-59
<b>Specificity</b>	TR $\alpha$ Polyclonal Antibody detects endogenous levels of TR $\alpha$ protein.
<b>Formulation</b>	Liquid in PBS containing 50% glycerol, 0.5% BSA and 0.02% sodium azide.
<b>Source</b>	Polyclonal, Rabbit,IgG
<b>Purification</b>	The antibody was affinity-purified from rabbit antiserum by affinity-chromatography using epitope-specific immunogen.
<b>Dilution</b>	WB: 1/500 - 1/2000. IHC: 1/100 - 1/300. ELISA: 1/10000.. IF 1:50-200
<b>Concentration</b>	1 mg/ml
<b>Purity</b>	≥90%
<b>Storage Stability</b>	-20°C/1 year
<b>Synonyms</b>	THRA; EAR7; ERBA1; NR1A1; THRA1; THRA2; Thyroid hormone receptor alpha; Nuclear receptor subfamily 1 group A member 1; V-erbA-related protein 7; EAR-7; c-erbA-1; c-erbA-alpha
<b>Observed Band</b>	55kD
<b>Cell Pathway</b>	Nucleus.; [Isoform Alpha-2]: Cytoplasm . Nucleus . When overexpressed found in the cytoplasm where it colocalizes with TACC1. .
<b>Tissue Specificity</b>	Brain,Brain cortex,Hippocampus,Kidney,Muscle,Testis,
<b>Function</b>	domain:Composed of three domains: a modulating N-terminal domain, a DNA-binding domain and a C-terminal steroid-binding domain.,function:Nuclear hormone receptor. High affinity receptor for triiodothyronine.,similarity:Belongs to the nuclear hormone receptor family.,similarity:Belongs to the nuclear hormone receptor family. NR1 subfamily.,similarity:Contains 1 nuclear receptor DNA-binding domain.,subunit:Interacts with NCOA3 and NCOA6 coactivators, leading to a strong increase of transcription of target genes. Probably interacts with SFPQ. Interacts with C1D (By similarity). Interacts with AKAP13.,

Nanjing BYabscience technology Co.,Ltd



**Background**

The protein encoded by this gene is a nuclear hormone receptor for triiodothyronine. It is one of the several receptors for thyroid hormone, and has been shown to mediate the biological activities of thyroid hormone. Knockout studies in mice suggest that the different receptors, while having certain extent of redundancy, may mediate different functions of thyroid hormone. Alternatively spliced transcript variants encoding distinct isoforms have been reported. [provided by RefSeq, Jul 2008],

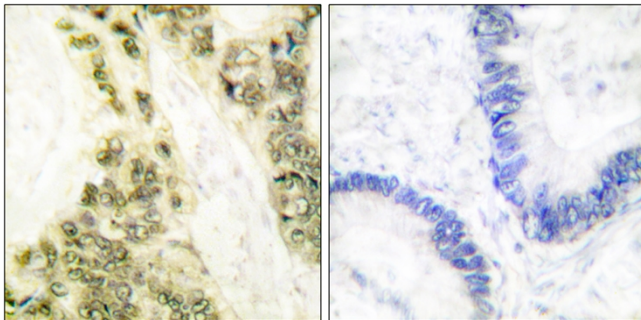
**matters needing attention**

Avoid repeated freezing and thawing!

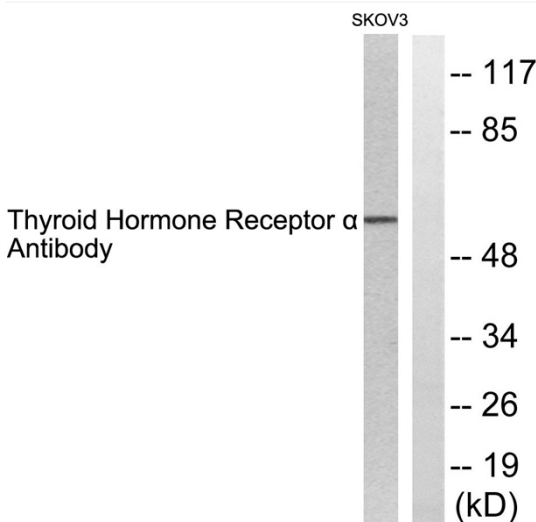
**Usage suggestions**

This product can be used in immunological reaction related experiments. For more information, please consult technical personnel.

**Products Images**



Immunohistochemistry analysis of paraffin-embedded human colon carcinoma tissue, using Thyroid Hormone Receptor alpha Antibody. The picture on the right is blocked with the synthesized peptide.



Western blot analysis of lysates from SKOV3 cells, using Thyroid Hormone Receptor alpha Antibody. The lane on the right is blocked with the synthesized peptide.



YT4755\_3.jpg

Western Blot analysis of various cell lysis. Primary Antibody was diluted at 1:1000. Secondary antibody(catalog#:RS23920) was diluted at 1:10000