



ROR α Polyclonal Antibody

Catalog No	BYab-03333
Isotype	IgG
Reactivity	Human;Monkey
Applications	WB;IHC;IF;ELISA
Gene Name	RORA
Protein Name	Nuclear receptor ROR-alpha
Immunogen	The antiserum was produced against synthesized peptide derived from human RORA. AA range:6-55
Specificity	ROR α Polyclonal Antibody detects endogenous levels of ROR α protein.
Formulation	Liquid in PBS containing 50% glycerol, 0.5% BSA and 0.02% sodium azide.
Source	Polyclonal, Rabbit,IgG
Purification	The antibody was affinity-purified from rabbit antiserum by affinity-chromatography using epitope-specific immunogen.
Dilution	Western Blot: 1/500 - 1/2000. Immunohistochemistry: 1/100 - 1/300. Immunofluorescence: 1/200 - 1/1000. ELISA: 1/40000. Not yet tested in other applications.
Concentration	1 mg/ml
Purity	≥90%
Storage Stability	-20°C/1 year
Synonyms	RORA; NR1F1; RZRA; Nuclear receptor ROR-alpha; Nuclear receptor RZR-alpha; Nuclear receptor subfamily 1 group F member 1; Retinoid-related orphan receptor-alpha
Observed Band	60kD
Cell Pathway	Nucleus .
Tissue Specificity	Widely expressed in a number of tissues. Expressed in both regulatory T-cells (Treg) and effector T-cells (Teff) (PubMed:18354202, PubMed:7916608). Isoform 4: Highly expressed in the central nervous system, including in the cerebellum (PubMed:29656859).
Function	function:Orphan nuclear receptor. Binds DNA as a monomer to hormone response elements (HRE) containing a single core motif half-site preceded by a short A-T-rich sequence. This isomer binds to the consensus sequence 5'-[AT][TA]A[AT][CGT]TAGGTCA-3'. ,similarity:Belongs to the nuclear hormone receptor family.,similarity:Belongs to the nuclear hormone receptor family. NR1

Nanjing BYabscience technology Co.,Ltd



subfamily.,similarity:Contains 1 nuclear receptor DNA-binding domain.,subunit:Monomer.,

Background

The protein encoded by this gene is a member of the NR1 subfamily of nuclear hormone receptors. It can bind as a monomer or as a homodimer to hormone response elements upstream of several genes to enhance the expression of those genes. The encoded protein has been shown to interact with NM23-2, a nucleoside diphosphate kinase involved in organogenesis and differentiation, as well as with NM23-1, the product of a tumor metastasis suppressor candidate gene. Also, it has been shown to aid in the transcriptional regulation of some genes involved in circadian rhythm. Four transcript variants encoding different isoforms have been described for this gene. [provided by RefSeq, Feb 2014],

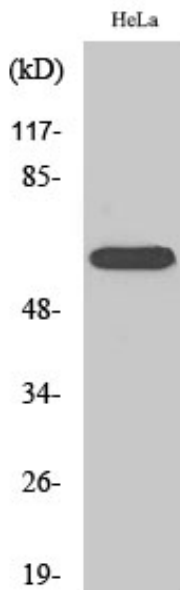
matters needing attention

Avoid repeated freezing and thawing!

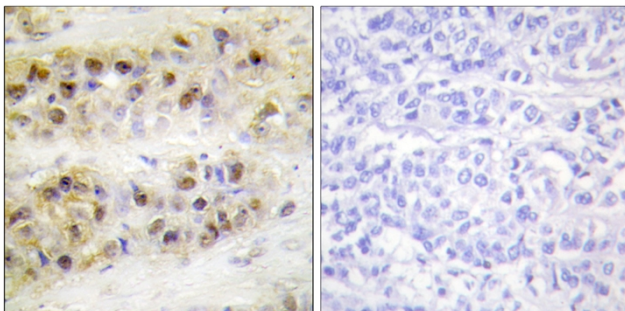
Usage suggestions

This product can be used in immunological reaction related experiments. For more information, please consult technical personnel.

Products Images

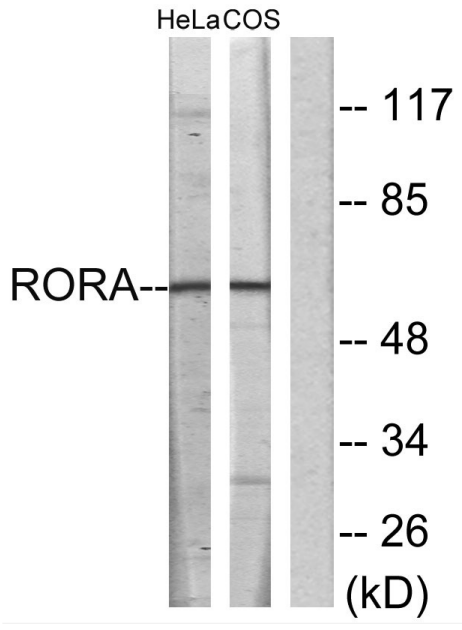


Western Blot analysis of various cells using ROR α Polyclonal Antibody cells nucleus extracted by Minute TM Cytoplasmic and Nuclear Fractionation kit (SC-003, Inventbiotech, MN, USA).



Immunohistochemistry analysis of paraffin-embedded human breast carcinoma tissue, using RORA Antibody. The picture on the right is blocked with the synthesized peptide.

Nanjing BYabscience technology Co.,Ltd



Western blot analysis of lysates from HeLa and COS7 cells, using RORA Antibody. The lane on the right is blocked with the synthesized peptide.